



Western Michigan University  
ScholarWorks at WMU

---

Legacy Scout Tickets from Pure Oil Company

---

8-20-2021

**MGRRE\_PureOilScoutTickets\_Andree, Ralph\_2\_21121005120000**

MGRRE

*Western Michigan University*

Follow this and additional works at: <https://scholarworks.wmich.edu/pure>



Part of the Geology Commons

---

#### WMU ScholarWorks Citation

MGRRE, "MGRRE\_PureOilScoutTickets\_Andree, Ralph\_2\_21121005120000" (2021). *Legacy Scout Tickets from Pure Oil Company*. 7213.

<https://scholarworks.wmich.edu/pure/7213>

This Document is brought to you for free and open access via ScholarWorks at WMU. It has been accepted for inclusion in Legacy Scout Tickets from Pure Oil Company by an authorized administrator of ScholarWorks at WMU. See the National Digital Catalogue - Science Base Catalogue for more collections submitted by MGRRE.



---

**MGRRE\_PureOilScoutTickets\_Andree, Ralph\_2\_21121005120000**

API 21121005120000

Permit Number 512

Lease Name Andree, Ralph

Well Number 2

County Muskegon

Township 10N

Range 17W

Section 12

2021 DEQ or Pure co\_name Nelson and Witt, Incorporated

Pure Number 351

Latitude 43.26694

Longitude -86.26993

DATE August 31, 1940

## LOCATION REPORT

No. 351

STATE Michigan COUNTY Muskegon DIST. Laketon SEC. 12 TOWN 10 N RANGE 17 W  
 WELL No. 2 (SERIAL No. 351) FARM Ralph Andree ACRES

NAME OF STREAM OR WATERS \_\_\_\_\_ QUADRANGLE SW SEOPERATOR Witt and Nelson Map Laketon Township, Muskegon County

\_\_\_\_\_ Feet from North Line of Farm

\_\_\_\_\_ " " East " " "

\_\_\_\_\_ " " South " " "

\_\_\_\_\_ " " West " " "

\_\_\_\_\_ Feet from North Line of Section

\_\_\_\_\_ " " East " " "

\_\_\_\_\_ " " South " " "

\_\_\_\_\_ " " West " " "

## LEGEND

○ LOCATION

⊙ RIG

⊕ DRILLING

☼ GAS WELL

● OIL WELL

⬮ SMALL OIL WELL

⊙ DRY HOLE

⬮ DRY SHOWING OIL

☼ DRY SHOWING GAS

⊙ ABANDONED LOCATION

☼ ABANDONED GAS WELL

⬮ ABANDONED OIL WELL

NOTE: Below make tracing from map. (when no map is obtainable make sketch) showing farm, center of section, this location with measurements and also wells, dry holes, or other locations in the vicinity of this location.

Plugged and abandoned 2-21-40.

REMARKS:

SIGNED

\_\_\_\_\_  
Superintendent or Foreman.



THE PURE OIL COMPANY  
LOCATION REPORT

DATE May 9th, 1929.

No. 351

STATE Michigan COUNTY Muskegon DIST. Laketon SEC. 12 TOWN 10 N RANGE 17 W  
PREC.

WELL No. 2 (SERIAL No. 351) FARM Ralph Andree ACRES

NAME OF STREAM OR WATERS QUADRANGLE SW $\frac{1}{4}$  - SE $\frac{1}{4}$

OPERATOR Witt & Nelson MAP Muskegon Co., Laketon Twp.

1350 Feet from North Line of Farm  
155

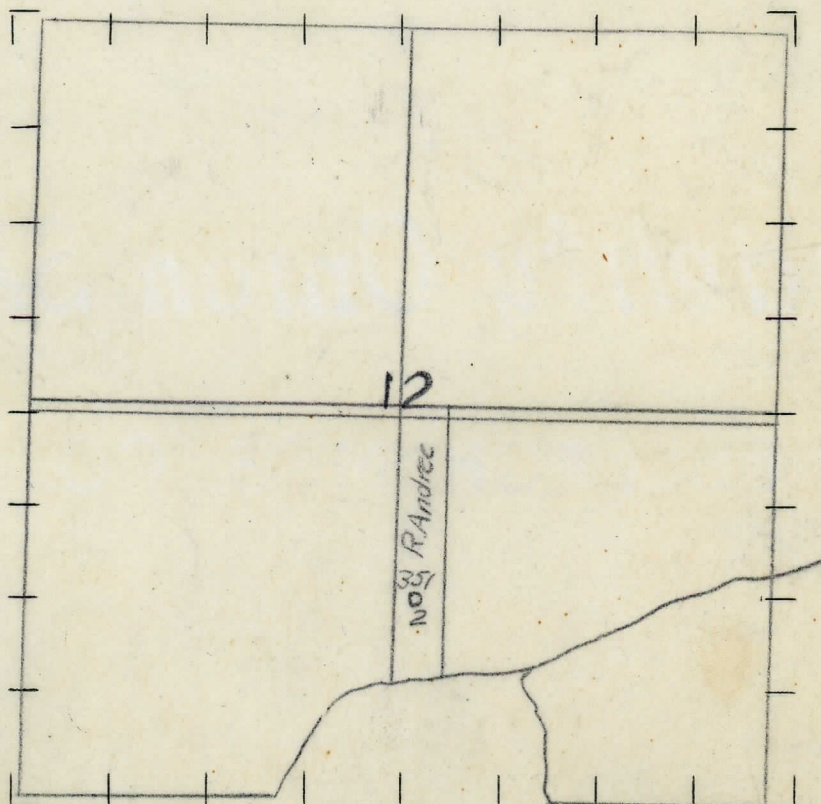
" " East " " "  
" " South " " "  
" " West " " "

Feet from North Line of Section  
" " East " " "  
" " South " " "  
" " West " " "

LEGEND

- |                  |                      |
|------------------|----------------------|
| ○ LOCATION       | ⊕ DRY HOLE           |
| ① RIG            | ⊕ DRY SHOWING OIL    |
| ⊕ DRILLING       | ⊕ DRY SHOWING GAS    |
| ⊕ GAS WELL       | ⊕ ABANDONED LOCATION |
| ● OIL WELL       | ⊕ ABANDONED GAS WELL |
| ⊕ SMALL OIL WELL | ⊕ ABANDONED OIL WELL |

NOTE: Below make tracing from map, (when no map is obtainable make sketch) showing farm, center of section, this location with measurements and also wells, dry holes, or other locations in the vicinity of this location. Make copy to keep for reference and send original to Columbus office.



REMARKS:

SIGNED

Superintendent or Foreman.

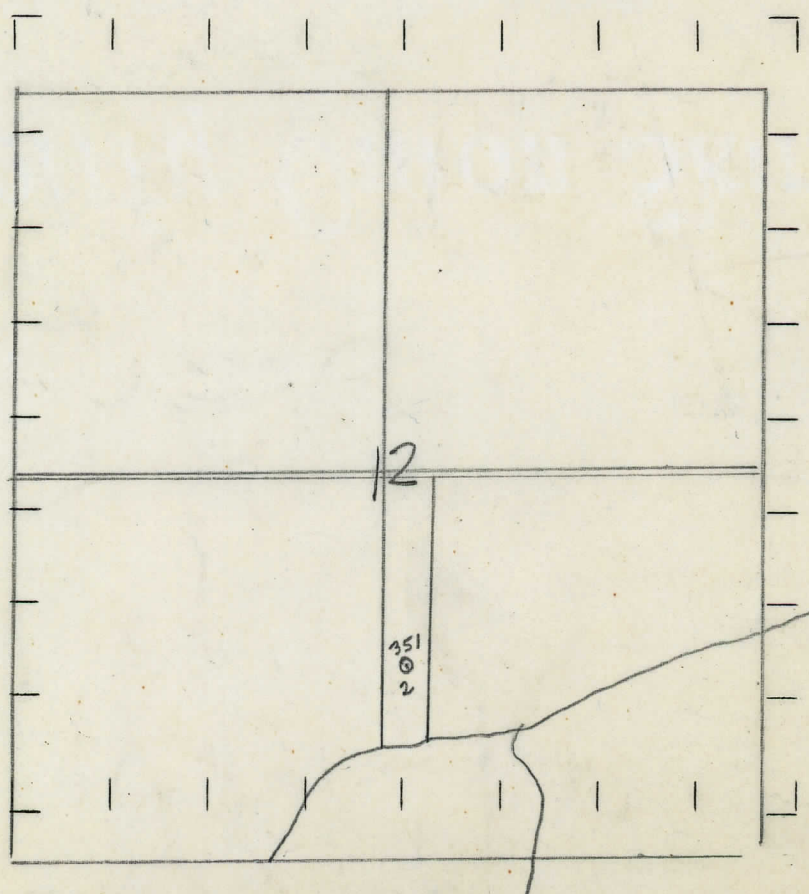


DATE 7/1/27 LOCATION BELOEL No. 221  
STATE Mich COUNTY Muskegon DIST. Laketon SEC. 12 TOWN 10 N RANGE 17 W  
WELL No. 2 (SERIAL No. 351) FARM Ralph Andree ACRES  
NAME OF STREAM OR WATERS QUADRANGLE SW-SE  
OPERATOR Witt & Nelson MAP Muskegon Co, Laketon Twp

1350 Feet from North Line of Farm  
155 " " East " " "  
" " South " " "  
" " West " " "  
Feet from North Line of Section  
" " East " " "  
" " South " " "  
" " West " " "

- LEGEND
- |                  |                      |
|------------------|----------------------|
| O LOCATION       | ⊕ DRY HOLE           |
| ① RIG            | ⊕ DRY SHOWING OIL    |
| ⊕ DRILLING       | ⊕ DRY SHOWING GAS    |
| ⊕ GAS WELL       | ⊕ ABANDONED LOCATION |
| ● OIL WELL       | ⊕ ABANDONED GAS WELL |
| ⊕ SMALL OIL WELL | ⊕ ABANDONED OIL WELL |

NOTE: Below make tracing from map, (when no map is obtainable make sketch) showing farm, center of section, this location with measurements and also wells, dry holes, or other locations in the vicinity of this location. Make copy to keep for reference and send original to Columbus office.



REMARKS:

SIGNED W. H. Bell  
Superintendent or Foreman.



