



Western Michigan University  
ScholarWorks at WMU

---

Legacy Scout Tickets from Pure Oil Company

---

8-20-2021

## MGRRE\_PureOilScoutTickets\_Clowar & Grossman & Horton Comm\_1\_21121004910000

MGRRE

*Western Michigan University*

Follow this and additional works at: <https://scholarworks.wmich.edu/pure>



Part of the Geology Commons

---

### WMU ScholarWorks Citation

MGRRE, "MGRRE\_PureOilScoutTickets\_Clowar & Grossman & Horton Comm\_1\_21121004910000" (2021).  
*Legacy Scout Tickets from Pure Oil Company*. 7214.  
<https://scholarworks.wmich.edu/pure/7214>

This Document is brought to you for free and open access via ScholarWorks at WMU. It has been accepted for inclusion in Legacy Scout Tickets from Pure Oil Company by an authorized administrator of ScholarWorks at WMU. See the National Digital Catalogue - Science Base Catalogue for more collections submitted by MGRRE.



---

**MGRRE\_PureOilScoutTickets\_Clowar & Grossman & Horton  
Comm\_1\_21121004910000**

API 21121004910000

Permit Number 491

Lease Name Clowar & Grossman & Horton Comm

Well Number 1

County Muskegon

Township 10N

Range 17W

Section 13

2021 DEQ or Pure co\_name Cochran, A .S.

Pure Number 352

Latitude 43.26097

Longitude -86.28093

## THE PURE OIL COMPANY

## LOCATION REPORT

No. 352

DATE May 9th, 1929.

STATE Michigan COUNTY Muskegon DIST. Laketon SEC. 13 TOWN 10 N RANGE 17 W  
 WELL No. 1 (SERIAL No. 352) FARM C. Clowar ACRES

NAME OF STREAM OR WATERS QUADRANGLE NW $\frac{1}{4}$  - NW $\frac{1}{4}$ OPERATOR A. S. Cochran MAP Muskegon Co., Laketon Twp.

Feet from North Line of Farm

" " East " " "

" " South " " "

" " West " " "

850' Feet from North Line of Section

" " East " " "

" " South " " "

400' " " West " " "

## LEGEND

O LOCATION

① RIG

⊕ DRILLING

☼ GAS WELL

● OIL WELL

◆ SMALL OIL WELL

⊙ DRY HOLE

◆ DRY SHOWING OIL

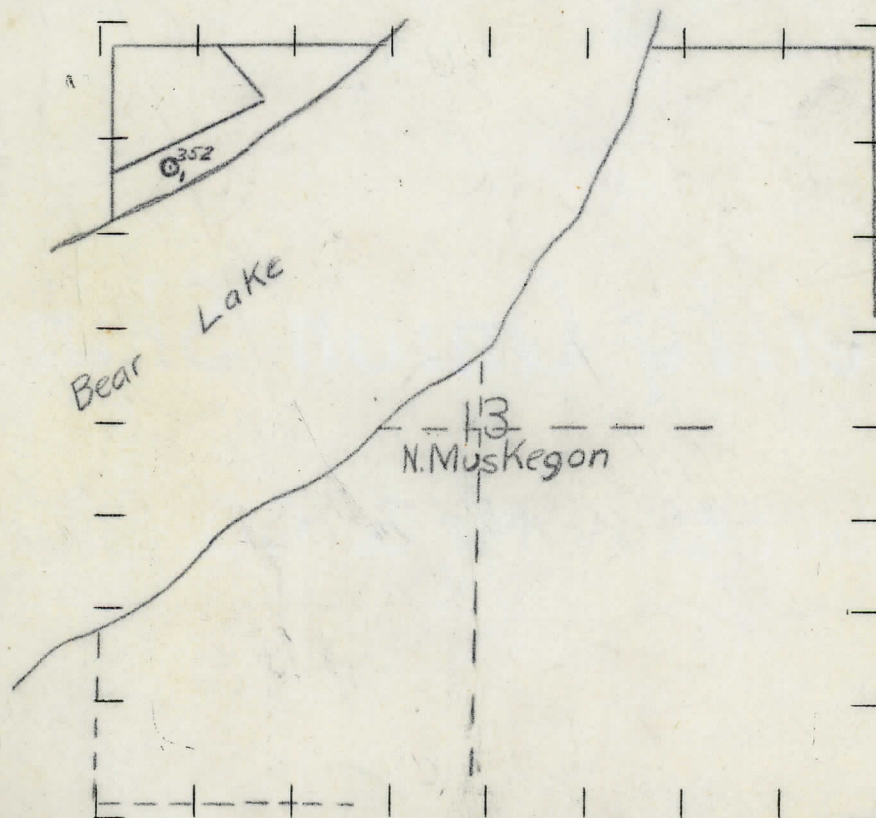
⊙ DRY SHOWING GAS

⊙ ABANDONED LOCATION

☼ ABANDONED GAS WELL

◆ ABANDONED OIL WELL

NOTE: Below make tracing from map, (when no map is obtainable make sketch) showing farm, center of section, this location with measurements and also wells, dry holes, or other locations in the vicinity of this location. Make copy to keep for reference and send original to Columbus office.



## REMARKS:

This location on a small lot. We have been unable to get a plat showing the divisions.

SIGNED

Superintendent or Foreman.

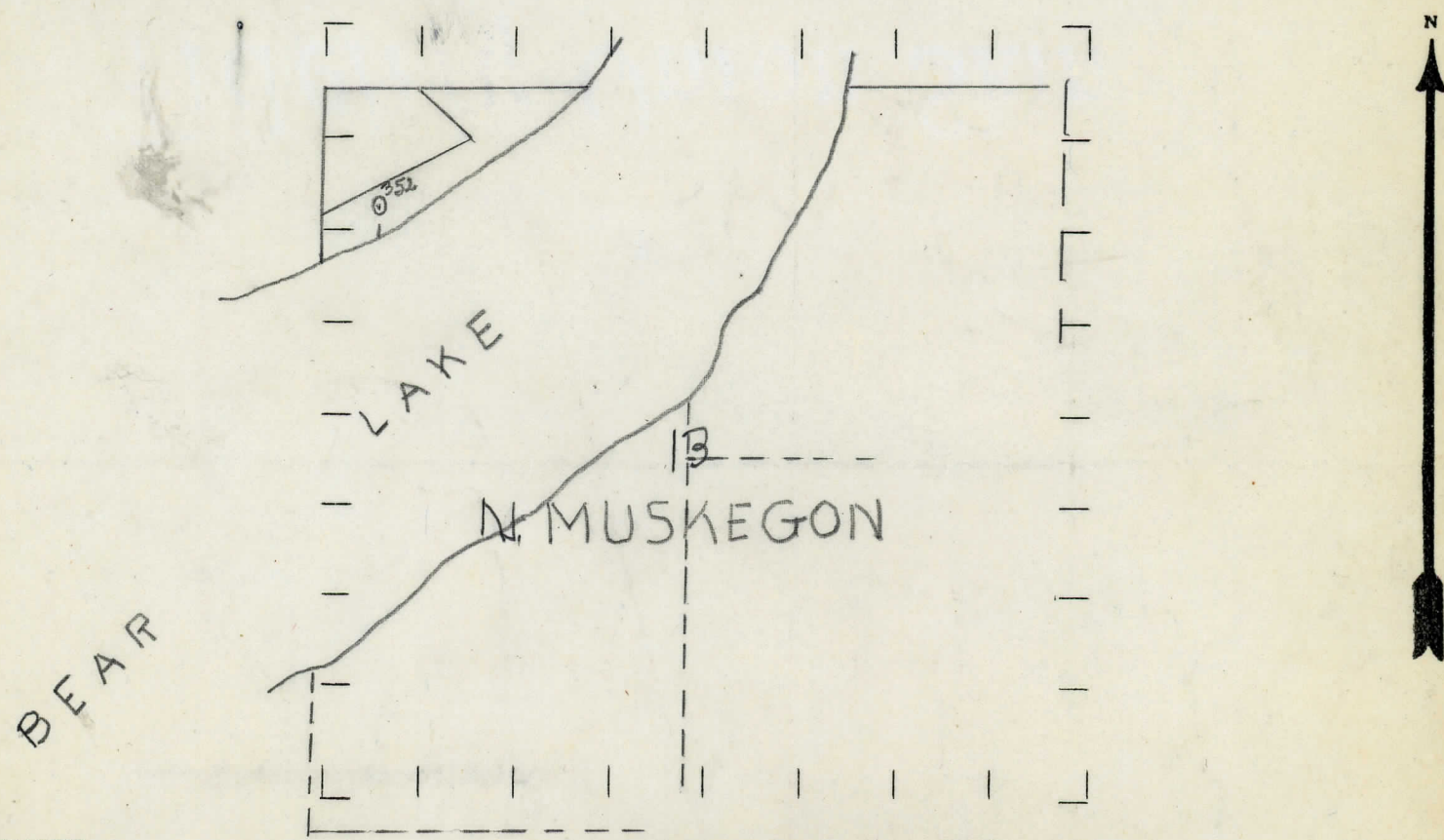


STATE Mich COUNTY Muskegon DIST. Laketon SEC. 13 TOWN 10 N RANGE 17 N  
 WELL No. 1 (SERIAL No. 352) FARM C. Clowar ACRES  
 NAME OF STREAM OR WATERS QUADRANGLE NN-NW  
 OPERATOR A.S. Cochran MAP Muskegon Co. Laketon Twp

Feet from North Line of Farm  
 1250 " " East " " "  
 1250 " " South " " "  
 " " West " " "  
 850 Feet from North Line of Section  
 " " East " " "  
 " " South " " "  
 400 " " West " " "

- LEGEND**
- O LOCATION
  - ① RIG
  - ⊕ DRILLING
  - ⊗ GAS WELL
  - OIL WELL
  - ⬮ SMALL OIL WELL
  - ⊙ DRY HOLE
  - ⬮ DRY SHOWING OIL
  - ⊙ DRY SHOWING GAS
  - ⊙ ABANDONED LOCATION
  - ⊗ ABANDONED GAS WELL
  - ⬮ ABANDONED OIL WELL

NOTE: Below make tracing from map, (when no map is obtainable make sketch) showing farm, center of section, this location with measurements and also wells, dry holes, or other locations in the vicinity of this location. Make copy to keep for reference and send original to Columbus office.



REMARKS: This location on a small lot. We have been unable to get a plat showing these divisions

SIGNED G.H. Bell  
 Superintendent or Foreman.



# Michigan Producing DIVISION

## COMPLETION RECORD

STATE Michigan COUNTY Muskegon DIST. Laketon SEC. 13 TOWN 10 RANGE 17

WELL No. 1 (SERIAL No. 352) FARM C. Clowar ACRES           

NAME OF STREAM OR WATERS	QUADRANGLE
--------------------------	------------

OPERATOR A.S.Cochran MAP \_\_\_\_\_

LOCATION REPORT SENT IN (DATE) 5/9/29

WELL STARTED (DATE) May 1929. WELL COMPLETED (DATE) June 1st, 1929.

## OIL WELL

## GAS WELL

## DRY HOLE

## ABANDONED WELL

CROSS OUT THREE OF THE ABOVE  
WELL RECORD

**DATE OF SHOT** \_\_\_\_\_ **NUMBER OF QUARTS** \_\_\_\_\_

1st 24 HOURS PRODUCTION \_\_\_\_\_ BARRELS OR FEET \_\_\_\_\_

2nd " " " " " "

3rd " " " " " "

4th " " " " " " " "

5th " " " " " " " "

## SAND AND CASING

[illegible][illegible]

NOTE:—MAKE COPY TO KEEP FOR REFERENCE AND SEND ORIGINAL TO CHICAGO OFFICE. LIST MATERIAL CHARGEABLE TO WELL ON OTHER SIDE.

SIGNED \_\_\_\_\_ SUPT. OR FOREMAN



