



Western Michigan University  
ScholarWorks at WMU

---

Legacy Scout Tickets from Pure Oil Company

---

8-20-2021

## MGRRE\_PureOilScoutTickets\_Bear Lake Fox Farm\_3\_unk

MGRRE

*Western Michigan University*

Follow this and additional works at: <https://scholarworks.wmich.edu/pure>



Part of the Geology Commons

---

### WMU ScholarWorks Citation

MGRRE, "MGRRE\_PureOilScoutTickets\_Bear Lake Fox Farm\_3\_unk" (2021). *Legacy Scout Tickets from Pure Oil Company*. 7243.

<https://scholarworks.wmich.edu/pure/7243>

This Document is brought to you for free and open access via ScholarWorks at WMU. It has been accepted for inclusion in Legacy Scout Tickets from Pure Oil Company by an authorized administrator of ScholarWorks at WMU. See the National Digital Catalogue - Science Base Catalogue for more collections submitted by MGRRE.



---

## MGRRE\_PureOilScoutTickets\_Bear Lake Fox Farm\_3\_unk

API unk

Permit Number unk

Lease Name Bear Lake Fox Farm

Well Number 3

County Muskegon

Township 10N

Range 17W

Section 12

2021 DEQ or Pure co\_name East Ohio Gas Co

Pure Number 381

Latitude 43.2707331

Longitude -86.2720544

## THE PURE OIL COMPANY

## LOCATION REPORT

DATE 6-1-29No. 381STATE Mich. COUNTY Mustkegon DIST. Laketon SEC. 12 TOWN 10N RANGE 17W  
PREC.WELL No. 3 (SERIAL No. 381) FARM Bear Lake Fox Farm ACRES

NAME OF STREAM OR WATERS. QUADRANGLE

OPERATOR East Ohio Gas Co MAP Laketon Twp730 Feet from North Line of Farm

" " East " " "

" " South " " "

160 " " West " " "

Feet from North Line of Section

2190 " " East " " "1910 " " South " " "

" " West " " "

## LEGEND

O LOCATION

① RIG

⊕ DRILLING

⊗ GAS WELL

● OIL WELL

⦿ SMALL OIL WELL

⊖ DRY HOLE

⦿ DRY SHOWING OIL

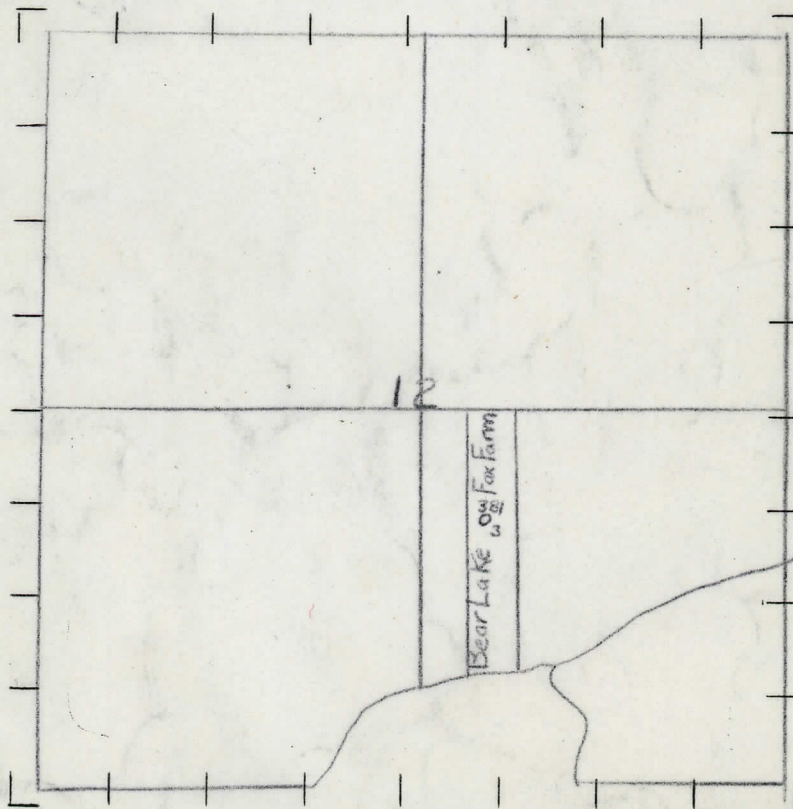
⦿ DRY SHOWING GAS

⦿ ABANDONED LOCATION

⦿ ABANDONED GAS WELL

⦿ ABANDONED OIL WELL

NOTE: Below make tracing from map, (when no map is obtainable make sketch) showing farm, center of section, this location with measurements and also wells, dry holes, or other locations in the vicinity of this location. Make copy to keep for reference and send original to Columbus office.



REMARKS:

SIGNED

Superintendent or Foreman.

Ther

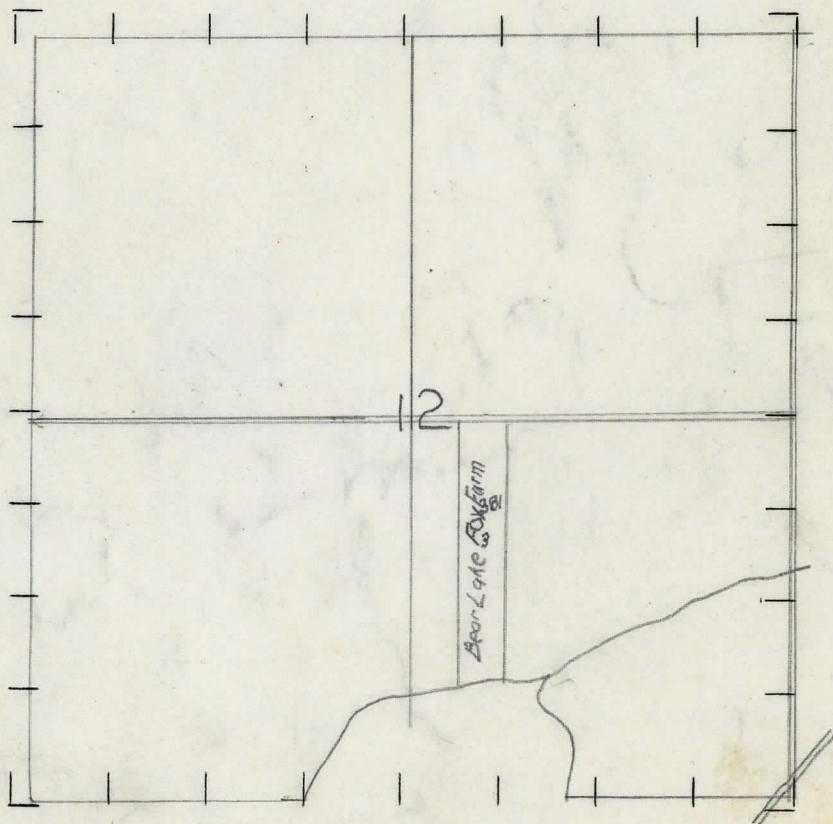


WELL No. 3 (SERIAL No. 381) FARM Bear Lake Fox Farm ACRES 17.11  
 NAME OF STREAM OR WATERS \_\_\_\_\_ QUADRANGLE NW-SE  
 OPERATOR East Ohio Gas Co MAP Muskegon Co. Laketon Twp

730 Feet from North Line of Farm  
 " " East " " "  
160 " " South " " "  
 " " West " " "  
 Feet from North Line of Section  
2190 " " East " " "  
1910 " " South " " "  
 " " West " " "

- LEGEND**
- |                  |                      |
|------------------|----------------------|
| ○ LOCATION       | ⊕ DRY HOLE           |
| ① RIG            | ⊕ DRY SHOWING OIL    |
| ⊕ DRILLING       | ⊕ DRY SHOWING GAS    |
| ⊕ GAS WELL       | ⊕ ABANDONED LOCATION |
| ● OIL WELL       | ⊕ ABANDONED GAS WELL |
| ⊕ SMALL OIL WELL | ⊕ ABANDONED OIL WELL |

NOTE: Below make tracing from map, (when no map is obtainable make sketch) showing farm, center of section, this location with measurements and also wells, dry holes, or other locations in the vicinity of this location. Make copy to keep for reference and send original to Columbus office.



REMARKS:

\_\_\_\_\_

\_\_\_\_\_

\_\_\_\_\_

SIGNED JH Bell  
 Superintendent or Foreman.



STATE Michigan COUNTY Muskegon DIST. Laketon TWP. Laketon SEC. 12 TOWN 10 N RANGE 17 W  
PREC. 1  
WELL No. 3 (SERIAL No. 381) FARM Bear Lake Fox Farm ACRES \_\_\_\_\_  
NAME OF STREAM OR WATERS \_\_\_\_\_ QUADRANGLE \_\_\_\_\_

LOCATION REPORT SENT IN (DATE) 6/1/29

OIL WELL	
----------	--

**GAS WELL**

**DRY HOLE**

**ABANDONED WELL**

DATE OF SHOT \_\_\_\_\_ NUMBER OF QUARTS \_\_\_\_\_

1st 24 HOURS PRODUCTION 600 bbls. BARRELS OR FEET

[illegible][illegible][illegible]

5-1- " " "

[illegible]

REMARKS \_\_\_\_\_

[illegible]

---

[illegible][illegible]

NOTE.—MAKE COPY TO KEEP FOR REFERENCE AND SEND ORIGINAL TO CHICAGO

OFFICE. LIST MATERIAL CHARGEABLE TO WELL ON OTHER SIDE.

SIGNED \_\_\_\_\_ Supt. or Foreman

SIGNED \_\_\_\_\_ SUPT. OR FOREMAN \_\_\_\_\_