



Western Michigan University
ScholarWorks at WMU

Legacy Scout Tickets from Pure Oil Company

8-20-2021

MGRRE_PureOilScoutTickets_Continental Motors Corporation_14_unk

MGRRE
Western Michigan University

Follow this and additional works at: <https://scholarworks.wmich.edu/pure>



Part of the Geology Commons

WMU ScholarWorks Citation

MGRRE, "MGRRE_PureOilScoutTickets_Continental Motors Corporation_14_unk" (2021). *Legacy Scout Tickets from Pure Oil Company*. 7253.
<https://scholarworks.wmich.edu/pure/7253>

This Document is brought to you for free and open access via ScholarWorks at WMU. It has been accepted for inclusion in Legacy Scout Tickets from Pure Oil Company by an authorized administrator of ScholarWorks at WMU. See the National Digital Catalogue - Science Base Catalogue for more collections submitted by MGRRE.



MGRRE_PureOilScoutTickets_Continental Motors Corporation_14_unk

API unk

Permit Number unk

Lease Name Continental Motors Corporation

Well Number 14

County Muskegon

Township 10N

Range 16W

Section 22

2021 DEQ or Pure co_name Continental Gas & Oil Co

Pure Number 391

Latitude 43.2415214

Longitude -86.1940914

THE PURE OIL COMPANY

DATE June 15, 1929

LOCATION REPORT

No. 391STATE Michigan COUNTY Muskegon DIST. Muskegon SEC. 22 TOWN 10N RANGE 16WWELL No. 14 (SERIAL No. 391) FARM Cont. Motors Corp. ACRES

NAME OF STREAM OR WATERS QUADRANGLE

OPERATOR Continental Gas & Oil Co. MAP180 Feet from North Line of Farm160 " " East " " "

" " South " " "

" " West " " "

1500 Feet from North Line of Section1810 " " East " " "

" " South " " "

" " West " " "

LEGEND

O LOCATION

① RIG

⊕ DRILLING

⊗ GAS WELL

● OIL WELL

⬮ SMALL OIL WELL

⬮ DRY HOLE

⬮ DRY SHOWING OIL

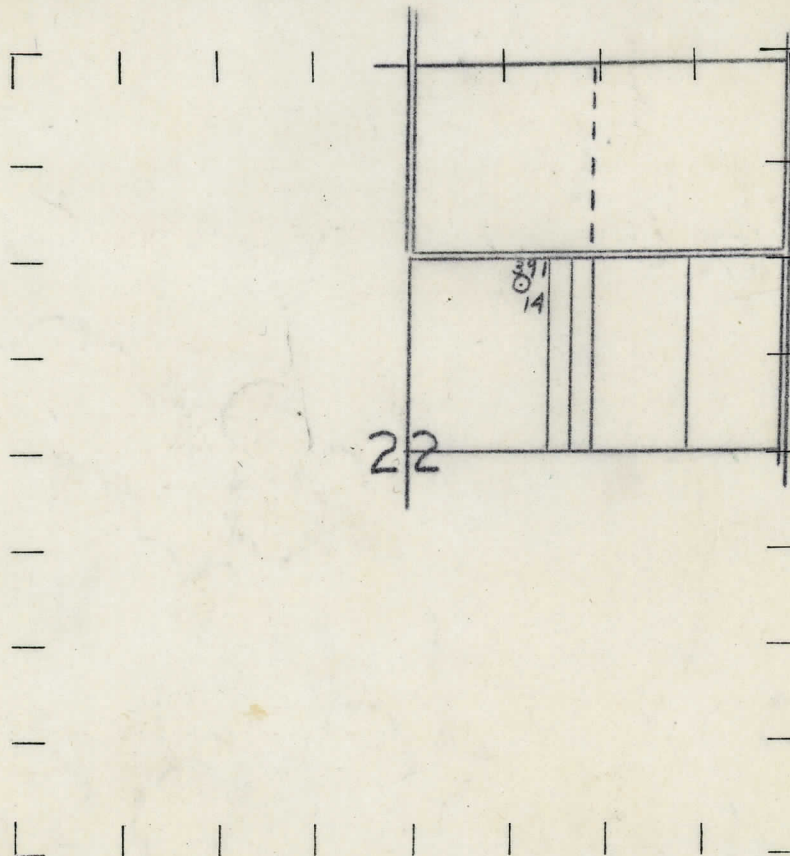
⬮ DRY SHOWING GAS

⬮ ABANDONED LOCATION

⬮ ABANDONED GAS WELL

⬮ ABANDONED OIL WELL

NOTE: Below make tracing from map, (when no map is obtainable make sketch) showing farm, center of section, this location with measurements and also wells, dry holes, or other locations in the vicinity of this location. Make copy to keep for reference and send original to Columbus office.



REMARKS:

SIGNED

Superintendent or Foreman.

WELL No. *14* (SERIAL No. *391*) FARM *Continental Motors Corp* ACRES
 NAME OF STREAM OR WATERS QUADRANGLE *SW-NE*

OPERATOR *Continental Gas & Oil Co* MAP *Muskegon Co, Muskegon Twp*

180 Feet from North Line of Farm

160 " " East " " "

" " South " " "

" " West " " "

Feet from North Line of Section

" " East " " "

" " South " " "

" " West " " "

LEGEND

○ LOCATION

① RIG

⊕ DRILLING

⊗ GAS WELL

● OIL WELL

⦿ SMALL OIL WELL

⊖ DRY HOLE

⦿ DRY SHOWING OIL

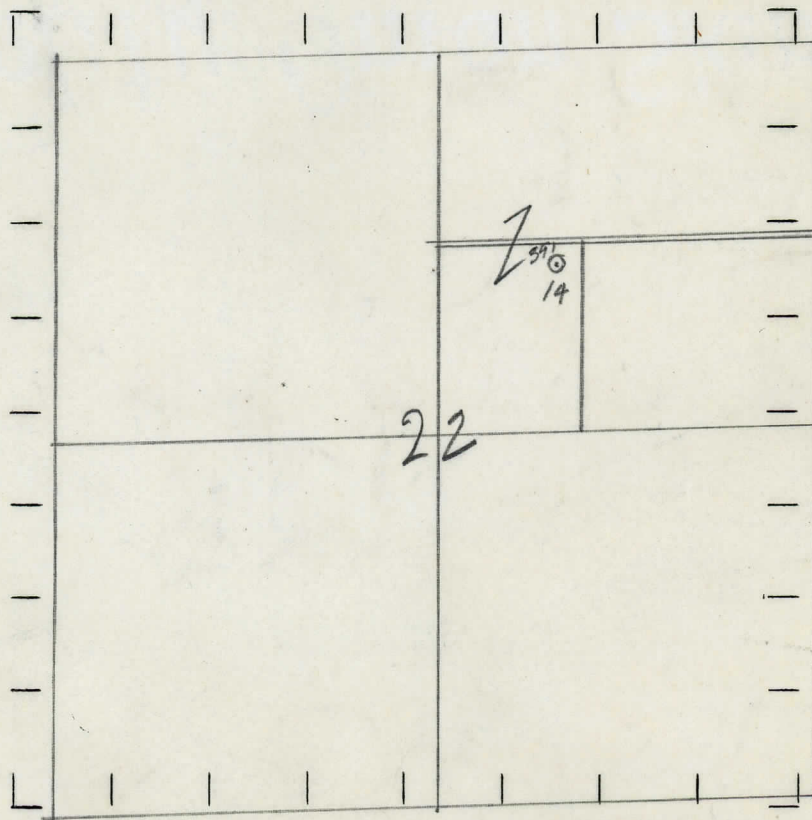
⊗ DRY SHOWING GAS

⊖ ABANDONED LOCATION

⦿ ABANDONED GAS WELL

⦿ ABANDONED OIL WELL

NOTE: Below make tracing from map, (when no map is obtainable make sketch) showing farm, center of section, this location with measurements and also wells, dry holes, or other locations in the vicinity of this location. Make copy to keep for reference and send original to Columbus office.



REMARKS:

The Continental Motors Corp have recently organized a branch to be known as the Continental Gas & Oil Co, for operating for oil and gas in Muskegon Twp.

SIGNED

Superintendent or Foreman.

