



Western Michigan University  
ScholarWorks at WMU

---

Legacy Scout Tickets from Pure Oil Company

---

8-20-2021

**MGRRE\_PureOilScoutTickets\_Berkema\_3\_21121006320000**

MGRRE

*Western Michigan University*

Follow this and additional works at: <https://scholarworks.wmich.edu/pure>



Part of the Geology Commons

---

#### WMU ScholarWorks Citation

MGRRE, "MGRRE\_PureOilScoutTickets\_Berkema\_3\_21121006320000" (2021). *Legacy Scout Tickets from Pure Oil Company*. 7264.

<https://scholarworks.wmich.edu/pure/7264>

This Document is brought to you for free and open access via ScholarWorks at WMU. It has been accepted for inclusion in Legacy Scout Tickets from Pure Oil Company by an authorized administrator of ScholarWorks at WMU. See the National Digital Catalogue - Science Base Catalogue for more collections submitted by MGRRE.



---

## MGRRE\_PureOilScoutTickets\_Berkema\_3\_21121006320000

API 21121006320000

Permit Number 632

Lease Name Berkema

Well Number 3

County Muskegon

Township 10N

Range 16W

Section 8

2021 DEQ or Pure co\_name Swastika Oil and Gas Company

Pure Number 402

Latitude 43.27584

Longitude -86.24281

## THE PURE OIL COMPANY

DATE 6/21/1929

## LOCATION REPORT

No. 402STATE Michigan COUNTY Muskegon DIST. Muskegon TWP. Muskegon SEC. 8 TOWN 10N RANGE 16W  
WELL No. 3 (SERIAL No. 402) FARM M. Harkema ACRESNAME OF STREAM OR WATERS QUADRANGLE NW 1/4 - NW 1/4OPERATOR Swastika Oil & Gas Co MAP Muskegon Co Muskegon Twp790 Feet from North Line of Farm

" " East " " "

" " South " " "

150 " " West " " "790 Feet from North Line of Section

" " East " " "

" " South " " "

150 " " West " " "

## LEGEND

O LOCATION

① RIG

⊕ DRILLING

⊗ GAS WELL

● OIL WELL

⊙ SMALL OIL WELL

⊕ DRY HOLE

⊗ DRY SHOWING OIL

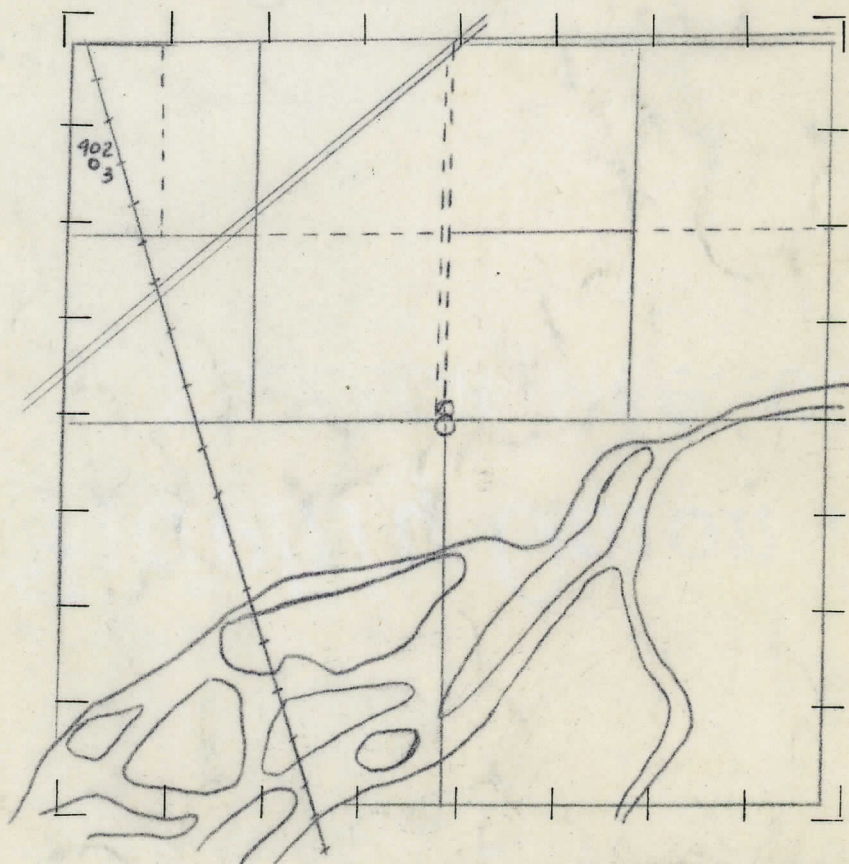
⊗ DRY SHOWING GAS

⊕ ABANDONED LOCATION

⊗ ABANDONED GAS WELL

⊕ ABANDONED OIL WELL

NOTE: Below make tracing from map, (when no map is obtainable make sketch) showing farm, center of section, this location with measurements and also wells, dry holes, or other locations in the vicinity of this location. Make copy to keep for reference and send original to Columbus office.



REMARKS:

SIGNED

Superintendent or Foreman.



WELL NO. 3 (SERIAL NO. 405) FARM W. BARKEMA

STATE Michigan COUNTY Muskegon DIST. Muskegon SEC. 8 TOWN 10N RANGE 16W

WELL No. 3 (SERIAL No. 402) FARM M. Barkema ACRES

NAME OF STREAM OR WATERS QUADRANGLE NW-NW

OPERATOR Swastika Oil &amp; Gas Co. MAP Muskegon Co. Muskegon Twp

790 Feet from North Line of Farm

" " East " " "

" " South " " "

150 " " West " " "

790 Feet from North Line of Section

" " East " " "

" " South " " "

150 " " West " " "

## LEGEND

O LOCATION

① RIG

⊕ DRILLING

⊗ GAS WELL

● OIL WELL

⊙ SMALL OIL WELL

⬮ DRY HOLE

⬮ DRY SHOWING OIL

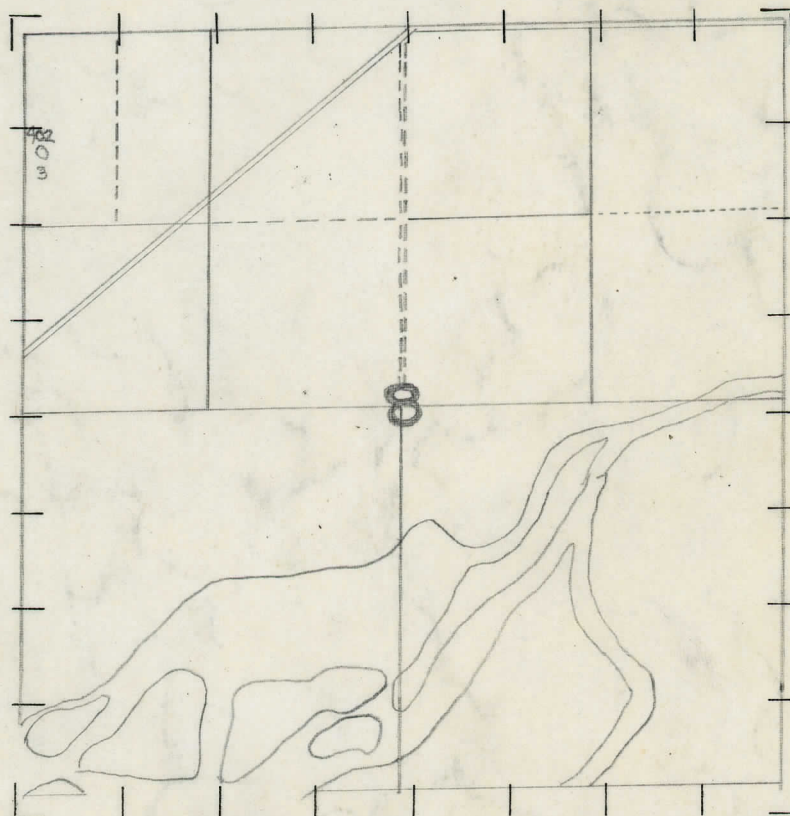
⬮ DRY SHOWING GAS

⬮ ABANDONED LOCATION

⬮ ABANDONED GAS WELL

⬮ ABANDONED OIL WELL

NOTE: Below make tracing from map, (when no map is obtainable make sketch) showing farm, center of section, this location with measurements and also wells, dry holes, or other locations in the vicinity of this location. Make copy to keep for reference and send original to Columbus office.



REMARKS:

SIGNED

G.H. Bell

Superintendent or Foreman.



SIGNED \_\_\_\_\_ SUPT. OR FOREMAN