



Western Michigan University  
ScholarWorks at WMU

---

Legacy Scout Tickets from Pure Oil Company

---

8-20-2021

**MGRRE\_PureOilScoutTickets\_Andree, Ralph\_3\_21121006400000**

MGRRE

*Western Michigan University*

Follow this and additional works at: <https://scholarworks.wmich.edu/pure>



Part of the Geology Commons

---

#### WMU ScholarWorks Citation

MGRRE, "MGRRE\_PureOilScoutTickets\_Andree, Ralph\_3\_21121006400000" (2021). *Legacy Scout Tickets from Pure Oil Company*. 7277.

<https://scholarworks.wmich.edu/pure/7277>

This Document is brought to you for free and open access via ScholarWorks at WMU. It has been accepted for inclusion in Legacy Scout Tickets from Pure Oil Company by an authorized administrator of ScholarWorks at WMU. See the National Digital Catalogue - Science Base Catalogue for more collections submitted by MGRRE.



---

**MGRRE\_PureOilScoutTickets\_Andree, Ralph\_3\_21121006400000**

API 21121006400000

Permit Number 640

Lease Name Andree, Ralph

Well Number 3

County Muskegon

Township 10N

Range 17W

Section 12

2021 DEQ or Pure co\_name Nelson and Witt, Incorporated

Pure Number 415

Latitude 43.26859

Longitude -86.26994

## THE PURE OIL COMPANY

DATE August 31, 1940

## LOCATION REPORT

No. 415

STATE Michigan COUNTY Muskegon ~~DIST~~ TWP. Laketon SEC. 12 TOWN 10 N RANGE 17 W  
WELL No. 3 (SERIAL No. 415) FARM Ralph Andree ACRES

NAME OF STREAM OR WATERS \_\_\_\_\_ QUADRANGLE NW SEOPERATOR Witt and Nelson Map Laketon Township, Muskegon County

\_\_\_\_ Feet from North Line of Farm

\_\_\_\_ " " East " " "

\_\_\_\_ " " South " " "

\_\_\_\_ " " West " " "

\_\_\_\_ Feet from North Line of Section

\_\_\_\_ " " East " " "

\_\_\_\_ " " South " " "

\_\_\_\_ " " West " " "

## LEGEND

○ LOCATION

① RIG

⊕ DRILLING

☀ GAS WELL

● OIL WELL

◆ SMALL OIL WELL

⊙ DRY HOLE

◆ DRY SHOWING OIL

⊙ DRY SHOWING GAS

⊙ ABANDONED LOCATION

☀ ABANDONED GAS WELL

◆ ABANDONED OIL WELL

NOTE: Below make tracing from map. (when no map is obtainable make sketch) showing farm, center of section, this location with measurements and also wells, dry holes, or other locations in the vicinity of this location.

Plugged and abandoned 2-28-40.

N

REMARKS:

SIGNED

Superintendent or Foreman.



THE PURE OIL COMPANY

LOCATION REPORT

No. 415

STATE Michigan COUNTY Muskegon DIST. Laketon SEC. 12 TOWN 10N RANGE 17W

WELL No. 3 (SERIAL No. 415) FARM Ralph Andree ACRES

NAME OF STREAM OR WATERS QUADRANGLE NW 1/4 SE 1/4

OPERATOR Witt & Nelson MAP Laketon Twp. - 4" = 1 mile

740' Feet from North Line of Farm

170' " " East " " "

" " South " " "

" " West " " "

3380' Feet from North Line of Section

2475' " " East " " "

" " South " " "

" " West " " "

2-28-40

LEGEND

○ LOCATION

① RIG

⊕ DRILLING

⊗ GAS WELL

● OIL WELL

◆ SMALL OIL WELL

◇ DRY HOLE

◆ DRY SHOWING OIL

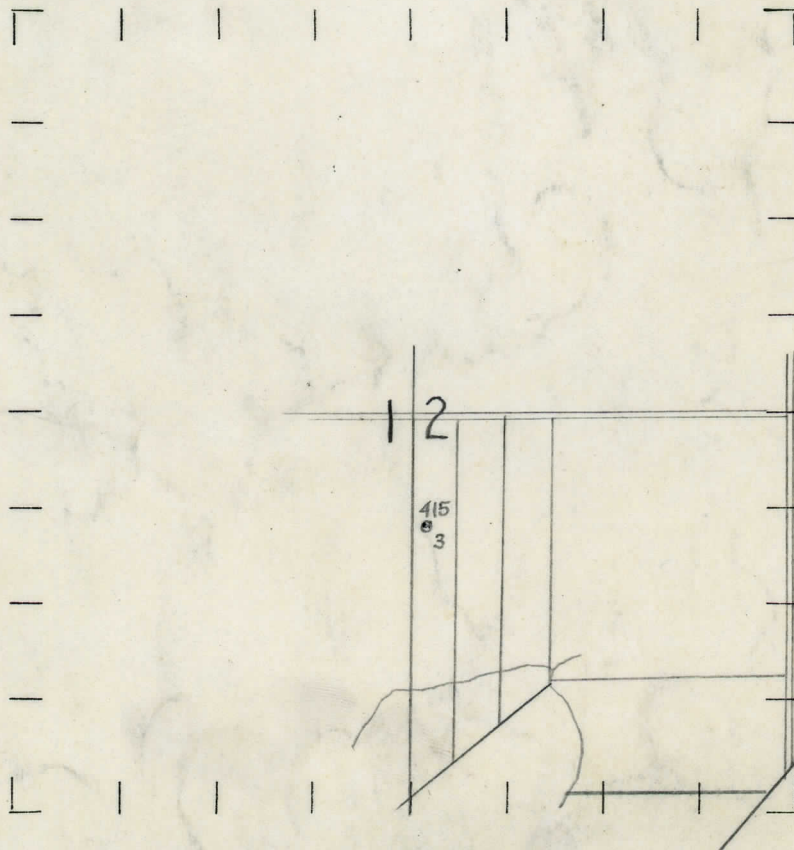
◇ DRY SHOWING GAS

⊗ ABANDONED LOCATION

⊗ ABANDONED GAS WELL

⊗ ABANDONED OIL WELL

NOTE: Below make tracing from map, (when no map is obtainable make sketch) showing farm, center of section, this location with measurements and also wells, dry holes, or other locations in the vicinity of this location. Make copy to keep for reference and send original to Columbus office.



N



REMARKS:

SIGNED

Superintendent or Foreman.



DATE

LOCATION REPORT

No.

DATE 6/27/29

LOCATION REPORT

No.

STATE Michigan COUNTY Muskegon DIST. Laketon SEC. 12 TOWN 10N RANGE 17W

WELL No. 3 (SERIAL No. 415) FARM Ralph Andree ACRES

NAME OF STREAM OR WATERS QUADRANGLE NW-SE

OPERATOR W.H. & Nelson MAP Muskegon Co, Laketon Twp

740 Feet from North Line of Farm

170 " " East " " "

" " South " " "

" " West " " "

Feet from North Line of Section

" " East " " "

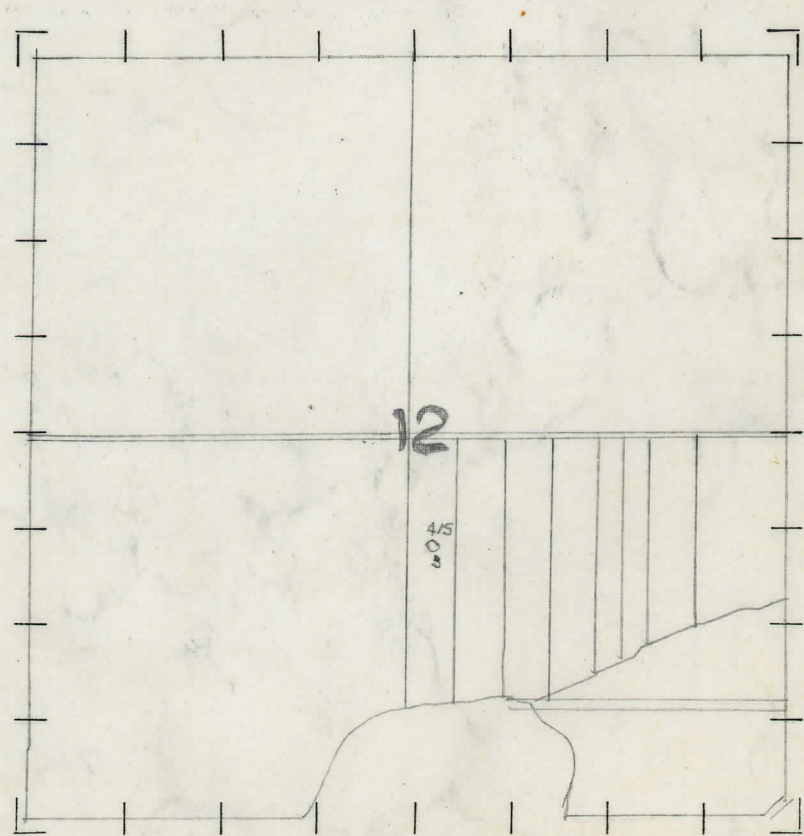
" " South " " "

" " West " " "

LEGEND

- O LOCATION
- ① RIG
- ⊕ DRILLING
- ⊙ GAS WELL
- OIL WELL
- ⬮ SMALL OIL WELL
- ⬮ DRY HOLE
- ⬮ DRY SHOWING OIL
- ⬮ DRY SHOWING GAS
- ⬮ ABANDONED LOCATION
- ⬮ ABANDONED GAS WELL
- ⬮ ABANDONED OIL WELL

NOTE: Below make tracing from map, (when no map is obtainable make sketch) showing farm, center of section, this location with measurements and also wells, dry holes, or other locations in the vicinity of this location. Make copy to keep for reference and send original to Columbus office.



REMARKS:

SIGNED

*W.H. Bell*

Superintendent or Foreman.



VCHER2

-BAUGE

## COMPLETION RECORD

No. -415-

WELL No. 3 (SERIAL No. 415) FARM R. Andree ACRES

NAME OF STREAM OR WATERS \_\_\_\_\_ QUADRANGLE \_\_\_\_\_

OPERATOR Witt-Nelson MAP

LOCATION REPORT SENT IN (DATE) 7/1/29

WELL STARTED (DATE) July 1929. WELL COMPLETED (DATE) August 10th, 1929.

## OIL WELL

## GAS WELL

~~DRY HOLE~~

### ABANDONED WELL

**CROSS OUT THREE OF THE ABOVE**

## WELL RECORD

DATE OF SHOT \_\_\_\_\_ NUMBER OF QUARTS \_\_\_\_\_

1st 24 HOURS PRODUCTION	500 bbls.	BARRELS OR FEET

2nd " " " " " "

[illegible]

4th " " " " " " " "

5th " " " " " "

## SAND AND CASING

[illegible][illegible]

**NOTE:—MAKE COPY TO KEEP FOR REFERENCE AND SEND ORIGINAL TO CHICAGO OFFICE. LIST MATERIAL CHARGEABLE TO WELL ON OTHER SIDE.**

**SIGNED** \_\_\_\_\_

**SUPT. OR FOREMAN**