



Western Michigan University  
ScholarWorks at WMU

---

Legacy Scout Tickets from Pure Oil Company

---

8-20-2021

## MGRRE\_PureOilScoutTickets\_Continental Motors Corp.\_16\_21121006610000

MGRRE  
*Western Michigan University*

Follow this and additional works at: <https://scholarworks.wmich.edu/pure>



Part of the Geology Commons

---

### WMU ScholarWorks Citation

MGRRE, "MGRRE\_PureOilScoutTickets\_Continental Motors Corp.\_16\_21121006610000" (2021). *Legacy Scout Tickets from Pure Oil Company*. 7284.  
<https://scholarworks.wmich.edu/pure/7284>

This Document is brought to you for free and open access via ScholarWorks at WMU. It has been accepted for inclusion in Legacy Scout Tickets from Pure Oil Company by an authorized administrator of ScholarWorks at WMU. See the National Digital Catalogue - Science Base Catalogue for more collections submitted by MGRRE.



---

MGRRE\_PureOilScoutTickets\_Continental Motors Corp.\_16\_21121006610000

API 21121006610000

Permit Number 661

Lease Name Continental Motors Corp.

Well Number 16

County Muskegon

Township 10N

Range 16W

Section 22

2021 DEQ or Pure co\_name ContinentAL Gas and Oil Company

Pure Number 422

Latitude 43.24464

Longitude -86.19315

## WELL REPORT - OUTSIDE OPERATIONS

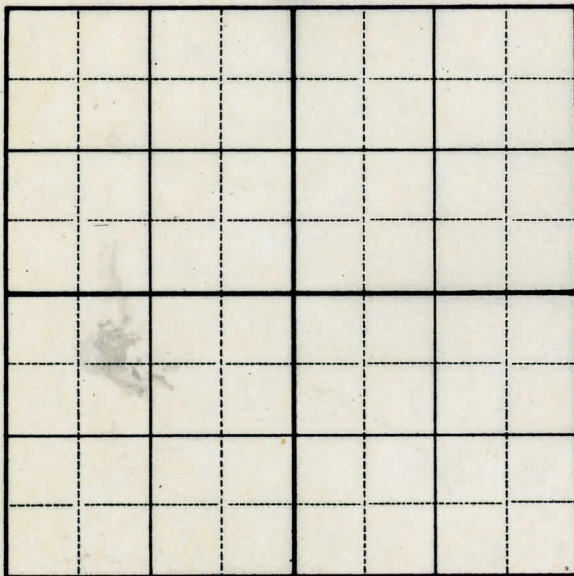
CORRECTED

SERIAL NO. 422STATE Michigan ~~YES~~ CO. MuskegonOPERATOR Continental Motors Corp.FARM Fee WELL NO. 16TWP. Muskegon S. 22 T. 10N R. 16W  
~~SURVEY~~LOC. SW NEWILDCAT ☐ FIELD ☐ FIELD NAME \_\_\_\_\_

MAP NO. \_\_\_\_\_ CO-ORD. \_\_\_\_\_ ELEV. \_\_\_\_\_

STATUS Plugged and abandoned - 10-30-53Total Depth - 1774'

NORTH

DATE 11-25-53 SCOUT JEC

DATE Dec. 6th, 1929D LOCATION  
THE PURE OIL COMPANY  
LOCATION REPORTNo. 422STATE Michigan COUNTY Muskegon DIST. Muskegon SEC. 22 TOWN 10 N RANGE 16 W  
WELL No. 16 (SERIAL No. 422) FARM Continental Motors Corporation ACRESNAME OF STREAM OR WATERS QUADRANGLE SW $\frac{1}{4}$  - NE $\frac{1}{4}$ OPERATOR Continental Gas & Oil Company MAP Muskegon Township, Muskegon County

200

Feet from North Line of Farm

" " East " " "

" " South " " "

200

" " West " " "

1520

Feet from North Line of Section

2440

" " East " " "

" " South " " "

" " West " " "

## LEGEND

O LOCATION

① RIG

⊕ DRILLING

⊗ GAS WELL

● OIL WELL

⦿ SMALL OIL WELL

⦿ DRY HOLE

⦿ DRY SHOWING OIL

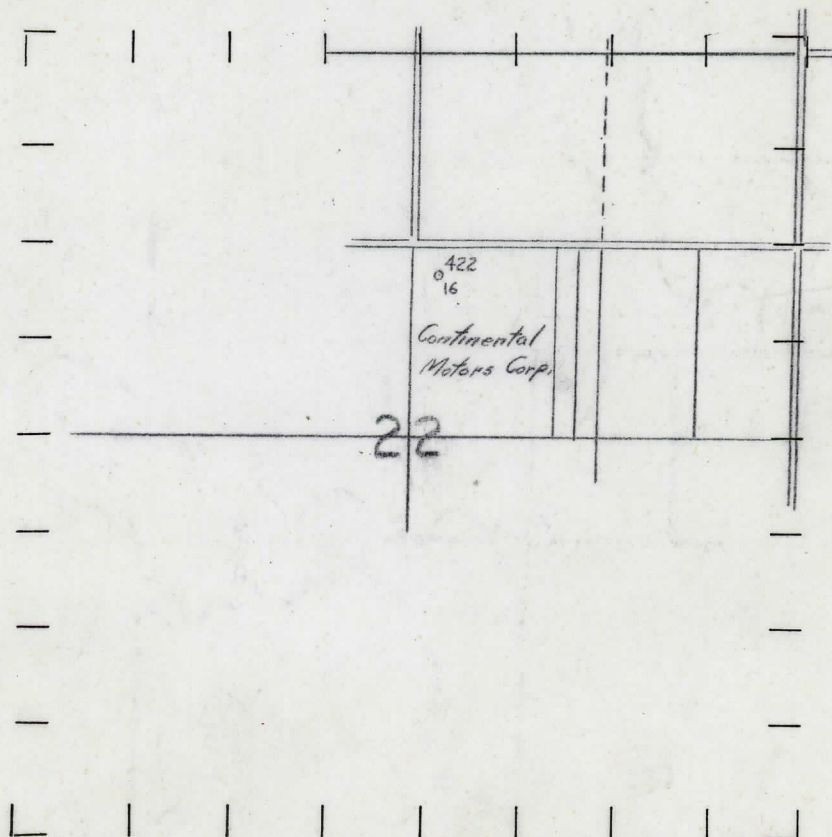
⦿ DRY SHOWING GAS

⦿ ABANDONED LOCATION

⦿ ABANDONED GAS WELL

⦿ ABANDONED OIL WELL

NOTE: Below make tracing from map, (when no map is obtainable make sketch) showing farm, center of section, this location with measurements and also wells, dry holes, or other locations in the vicinity of this location. Make copy to keep for reference and send original to Columbus office.



REMARKS:

CORRECTED LOCATION

SIGNED

Superintendent or Foreman.

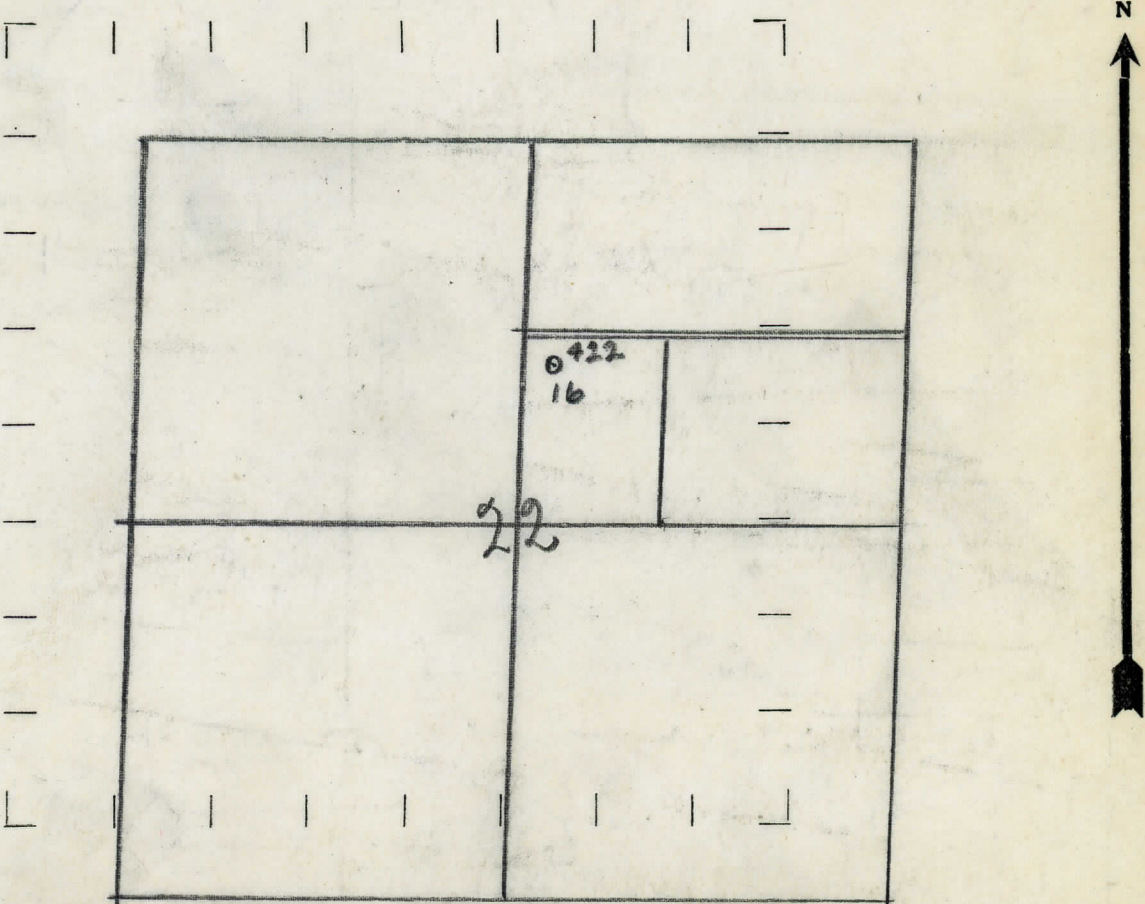


OBSERVATOR CONTINENTAL GAS & OIL COMPANY NAME OF STREAM OR WATERS  
 NAME OF SURVEYOR OR MAINTENANCE CONTINENTAL MOTOR CORP QUADRANGLE SW-NE  
 METEOR NO. 70 (SERIAL NO. 422) ELEVATION 1000 FEET  
 STATE MICHIGAN COUNTY MUSKEGON DIST. MUSKEGON SEC. 22 TOWN 10 N RANGE 16 W  
 WELL NO. 16 (SERIAL NO. 422) FARM CONTINENTAL MOTORS CORP ACRES  
 NAME OF STREAM OR WATERS SW-NE  
 OPERATOR CONTINENTAL GAS & OIL CO MAP MUSKEGON TWP 1" 1320'

200 Feet from North Line of Farm  
 " " East " " "  
 " " South " " "  
200 " " West " " "  
1520 Feet from North Line of Section  
2440' " " East " " "  
 " " South " " "  
 " " West " " "

- LEGEND**
- LOCATION
  - ① RIG
  - ⊕ DRILLING
  - ⊗ GAS WELL
  - OIL WELL
  - ⬤ SMALL OIL WELL
  - ⬢ DRY HOLE
  - ⬢ DRY SHOWING OIL
  - ⬢ DRY SHOWING GAS
  - ⬢ ABANDONED LOCATION
  - ⬢ ABANDONED GAS WELL
  - ⬢ ABANDONED OIL WELL

NOTE: Below make tracing from map, (when no map is obtainable make sketch) showing farm, center of section, this location with measurements and also wells, dry holes, or other locations in the vicinity of this location. Make copy to keep for reference and send original to Columbus office.



REMARKS: Corrected Location

SIGNED G.H. Bell  
 Superintendent or Foreman.



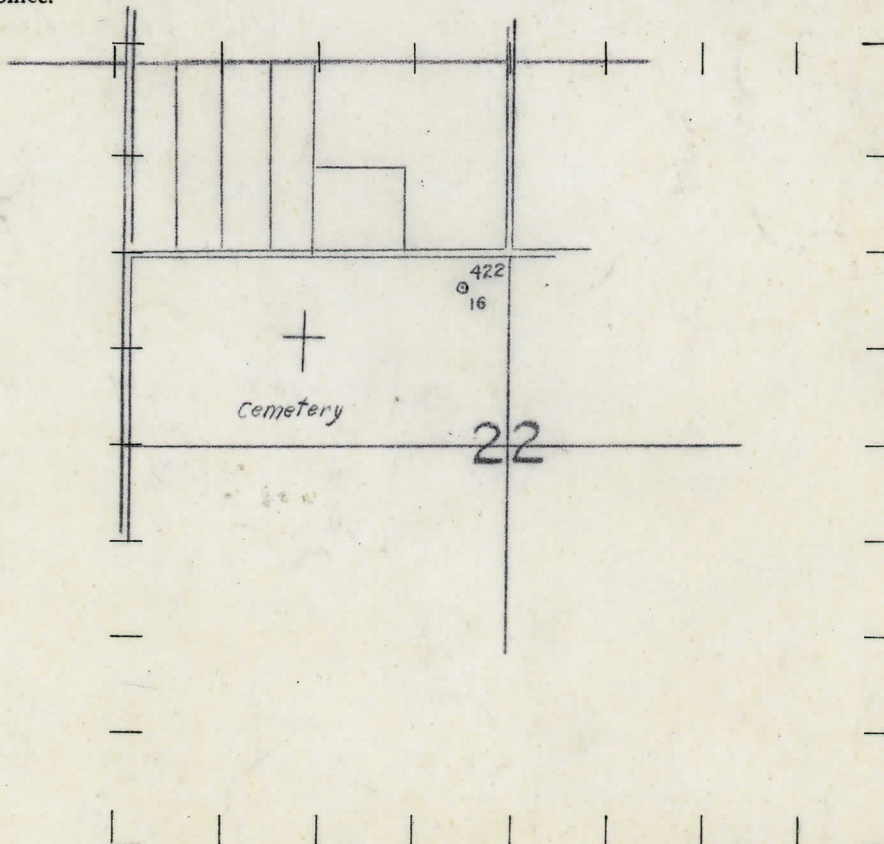
STATE Michigan COUNTY Muskegon DIST. Muskegon SEC. 22 TOWN 10 N RANGE 16 W  
 WELL No. 16 (SERIAL No. 422) FARM Cemetery ACRES \_\_\_\_\_  
 NAME OF STREAM OR WATERS \_\_\_\_\_ QUADRANGLE SD1 - NW1  
 OPERATOR Continental Gas & Oil Co., MAP Muskegon Twp., Muskegon Co.,

250 Feet from North Line of Farm  
300 " " East " " "  
 " " South " " "  
 " " West " " "  
1570 Feet from North Line of Section  
 " " East " " "  
 " " South " " "  
2340 " " West " " "

**LEGEND**

- |                  |                      |
|------------------|----------------------|
| ○ LOCATION       | ✧ DRY HOLE           |
| ① RIG            | ✦ DRY SHOWING OIL    |
| ⊕ DRILLING       | ⊗ DRY SHOWING GAS    |
| ⊛ GAS WELL       | ⊙ ABANDONED LOCATION |
| ● OIL WELL       | ⊛ ABANDONED GAS WELL |
| ⬮ SMALL OIL WELL | ⬮ ABANDONED OIL WELL |

NOTE: Below make tracing from map, (when no map is obtainable make sketch) showing farm, center of section, this location with measurements and also wells, dry holes, or other locations in the vicinity of this location. Make copy to keep for reference and send original to Columbus office.



REMARKS:

SIGNED

Superintendent or Foreman.



STATE Michigan COUNTY Muskegon DIST. Muskegon SEC. 22 TOWN 10N RANGE 16W  
 WELL No. 16 (SERIAL No. 422) FARM \_\_\_\_\_ ACRES \_\_\_\_\_  
 NAME OF STREAM OR WATERS \_\_\_\_\_ QUADRANGLE SE-NW  
 OPERATOR Continental Gas & Oil Co MAP Muskegon Co, Muskegon Twp

250 Feet from North Line of Farm

300 " " East " " "

" " South " " "

" " West " " "

1570 Feet from North Line of Section

" " East " " "

" " South " " "

2340 " " West " " "

## LEGEND

O LOCATION

① RIG

⊕ DRILLING

⊗ GAS WELL

● OIL WELL

⬮ SMALL OIL WELL

⬮ DRY HOLE

⬮ DRY SHOWING OIL

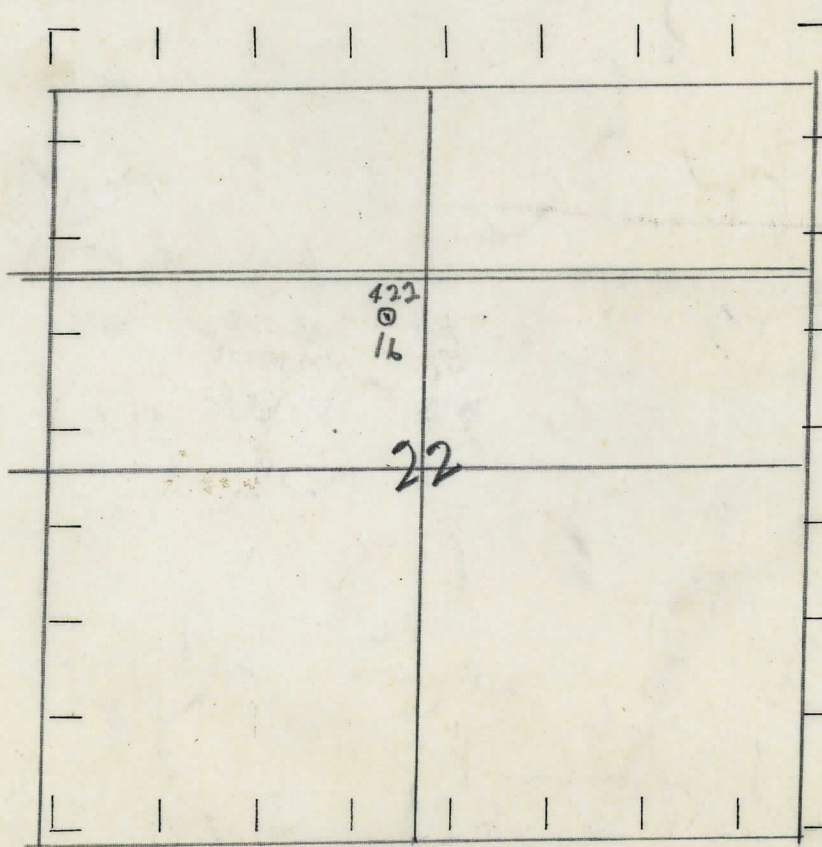
⬮ DRY SHOWING GAS

⬮ ABANDONED LOCATION

⬮ ABANDONED GAS WELL

⬮ ABANDONED OIL WELL

NOTE: Below make tracing from map, (when no map is obtainable make sketch) showing farm, center of section, this location with measurements and also wells, dry holes, or other locations in the vicinity of this location. Make copy to keep for reference and send original to Columbus office.



REMARKS:

SIGNED

*JAT Bell*

Superintendent or Foreman.



No. -422-

**SUPT. OR FOREMAN**