



Western Michigan University  
ScholarWorks at WMU

---

Legacy Scout Tickets from Pure Oil Company

---

8-20-2021

**MGRRE\_PureOilScoutTickets\_Brand, Geo.\_3\_21121006760000**

MGRRE

*Western Michigan University*

Follow this and additional works at: <https://scholarworks.wmich.edu/pure>



Part of the Geology Commons

---

#### WMU ScholarWorks Citation

MGRRE, "MGRRE\_PureOilScoutTickets\_Brand, Geo.\_3\_21121006760000" (2021). *Legacy Scout Tickets from Pure Oil Company*. 7286.

<https://scholarworks.wmich.edu/pure/7286>

This Document is brought to you for free and open access via ScholarWorks at WMU. It has been accepted for inclusion in Legacy Scout Tickets from Pure Oil Company by an authorized administrator of ScholarWorks at WMU. See the National Digital Catalogue - Science Base Catalogue for more collections submitted by MGRRE.



---

**MGRRE\_PureOilScoutTickets\_Brand, Geo.\_3\_21121006760000**

API 21121006760000

Permit Number 676

Lease Name Brand, Geo.

Well Number 3

County Muskegon

Township 10N

Range 17W

Section 11

2021 DEQ or Pure co\_name Republic Gas and Oil Company

Pure Number 424

Latitude 43.26458

Longitude -86.28602

## THE PURE OIL COMPANY

## LOCATION REPORT

No.

424

DATE July 13, 1929STATE Michigan COUNTY Muskegon DIST. Laketon SEC. 11 TOWN 10 N RANGE 17 WWELL No. 3 (SERIAL No. 424) FARM Georgia Brand ACRESNAME OF STREAM OR WATERS QUADRANGLE SE $\frac{1}{4}$  - SE $\frac{1}{4}$ OPERATOR Betty Jane Oil Co. MAP Laketon Twp., Muskegon Co.

Feet from North Line of Farm

" " East " " "

275 " " South " " "300 " " West " " "

Feet from North Line of Section

1020 " " East " " "275 " " South " " "

" " West " " "

## LEGEND

O LOCATION

① RIG

⊕ DRILLING

⊗ GAS WELL

● OIL WELL

⬮ SMALL OIL WELL

⬮ DRY HOLE

⬮ DRY SHOWING OIL

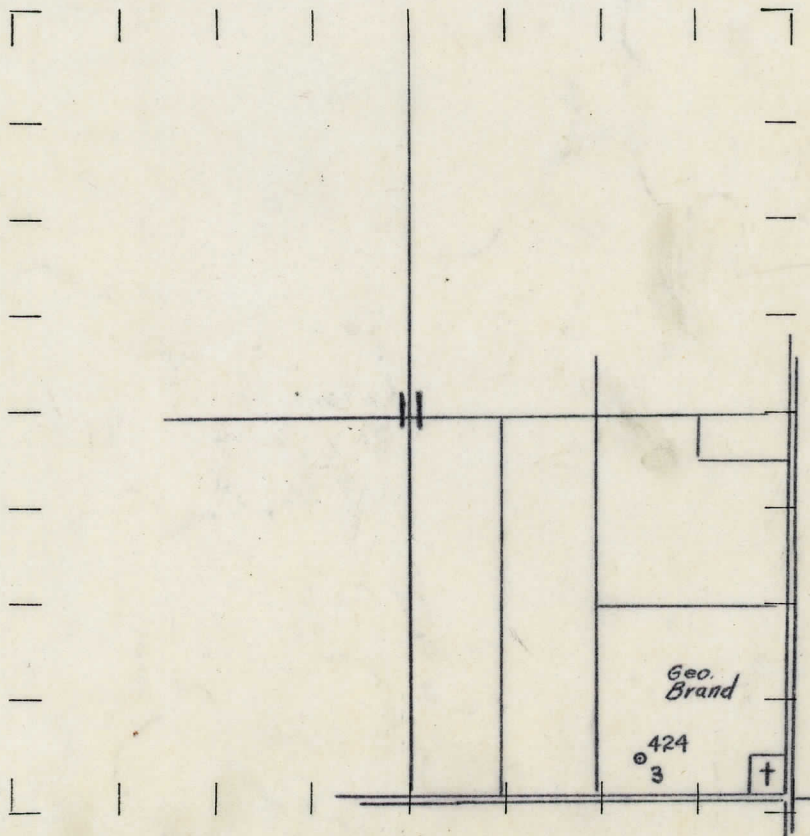
⬮ DRY SHOWING GAS

⬮ ABANDONED LOCATION

⬮ ABANDONED GAS WELL

⬮ ABANDONED OIL WELL

NOTE: Below make tracing from map, (when no map is obtainable make sketch) showing farm, center of section, this location with measurements and also wells, dry holes, or other locations in the vicinity of this location. Make copy to keep for reference and send original to Columbus office.



REMARKS:

SIGNED

Superintendent or Foreman.



STATE Michigan COUNTY Muskegon DIST. Laketon SEC. 11 TOWN 10N RANGE 17W  
 WELL No. 3 (SERIAL No. 424) FARM Geo Brand ACRES  
 NAME OF STREAM OR WATERS QUADRANGLE SE-SE  
 OPERATOR Betty Jane Oil Co MAP Muskegon Co. Laketon Twp

Feet from North Line of Farm

275 " " East " " "  
 300 " " South " " "  
 " " West " " "

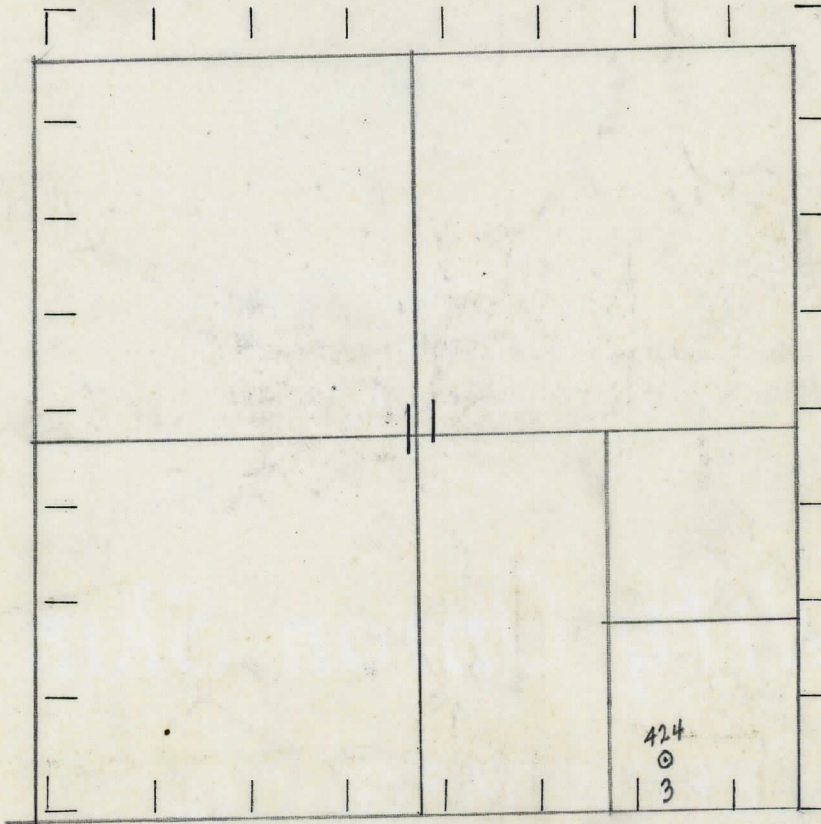
Feet from North Line of Section

1020 " " East " " "  
 275 " " South " " "  
 " " West " " "

LEGEND

- |                  |                      |
|------------------|----------------------|
| ○ LOCATION       | ✦ DRY HOLE           |
| ① RIG            | ✦ DRY SHOWING OIL    |
| ⊕ DRILLING       | ✦ DRY SHOWING GAS    |
| ⊗ GAS WELL       | ⊗ ABANDONED LOCATION |
| ● OIL WELL       | ⊗ ABANDONED GAS WELL |
| ⬮ SMALL OIL WELL | ⬮ ABANDONED OIL WELL |

NOTE: Below make tracing from map, (when no map is obtainable make sketch) showing farm, center of section, this location with measurements and also wells, dry holes, or other locations in the vicinity of this location. Make copy to keep for reference and send original to Columbus office.



REMARKS:

SIGNED

*W. B. Bell*

Superintendent or Foreman.



## Michigan Producing DIVISION COMPLETION RECORD

No. -424-

WELL No. 3 (SERIAL No. 424) FARM Geo. Brand ACRES 2.100

NAME OF STREAM OR WATERS \_\_\_\_\_ QUADRANGLE \_\_\_\_\_

OPERATOR Betty Janex Oil Co. MAP                     

LOCATION REPORT SENT IN (DATE) 7/13/29

WELL STARTED (DATE) July 1929. WELL COMPLETED (DATE) August 17th, 1929.

## OIL WELL

## GAS WELL

**DRY HOLE**

## ABANDONED WELL

CROSS OUT THREE OF THE ABOVE  
WELL RECORD

DATE OF SHOT \_\_\_\_\_ NUMBER OF QUARTS \_\_\_\_\_

1st 24 HOURS PRODUCTION				75 bbls.	BARRELS OR FEET		
2nd	"	"	"		"	"	"
3rd	"	"	"		"	"	"
4th	"	"	"		"	"	"
5th	"	"	"		"	"	"

## SAND AND CASING

[illegible]

REMARKS