



Western Michigan University
ScholarWorks at WMU

Legacy Scout Tickets from Pure Oil Company

8-20-2021

**MGRRE_PureOilScoutTickets_City of Muskegon
_17_21121007010000**

MGRRE
Western Michigan University

Follow this and additional works at: <https://scholarworks.wmich.edu/pure>



Part of the Geology Commons

WMU ScholarWorks Citation

MGRRE, "MGRRE_PureOilScoutTickets_City of Muskegon _17_21121007010000" (2021). *Legacy Scout Tickets from Pure Oil Company*. 7305.
<https://scholarworks.wmich.edu/pure/7305>

This Document is brought to you for free and open access via ScholarWorks at WMU. It has been accepted for inclusion in Legacy Scout Tickets from Pure Oil Company by an authorized administrator of ScholarWorks at WMU. See the National Digital Catalogue - Science Base Catalogue for more collections submitted by MGRRE.



MGRRE_PureOilScoutTickets_City of Muskegon _17_21121007010000

API 21121007010000

Permit Number 701

Lease Name City of Muskegon

Well Number 17

County Muskegon

Township 10N

Range 16W

Section 22

2021 DEQ or Pure co_name Continental Gas and Oil Company

Pure Number 443

Latitude 43.2445

Longitude -86.19489

WELL REPORT - OUTSIDE OPERATIONS

CORRECTED

SERIAL NO.

443

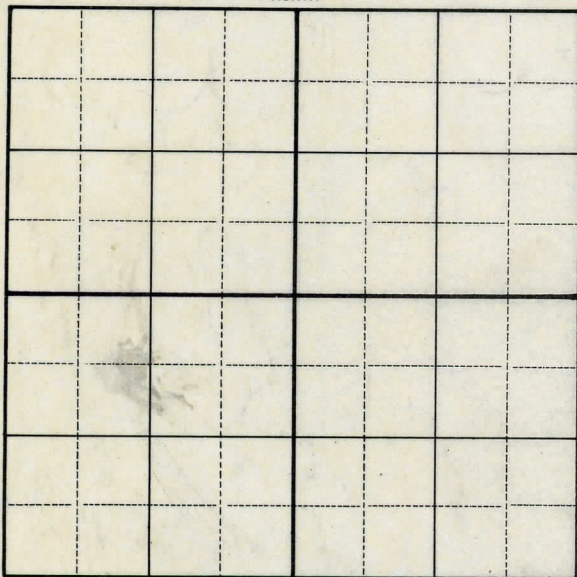
STATE Michigan ~~DESK~~ Muskegon
CO.
OPERATOR Continental Gas & Oil Company
FARM City of Muskegon WELL NO. 17
TWP. Muskegon S. 22 T. 10N R. 16W
~~SURVEY~~
LOC. NE SE NW

WILDCAT ☐ FIELD ☐ FIELD NAME _____

MAP NO. _____ CO-ORD. _____ ELEV. _____

STATUS Plugged and Abandoned 11-20-50.Total Depth 1776'.

NORTH

DATE 12-20-50 SCOUT H. J. G.

DATE Dec. 6, 1929.

LOCATION
THE PURE OIL COMPANY
LOCATION REPORT

No. 443

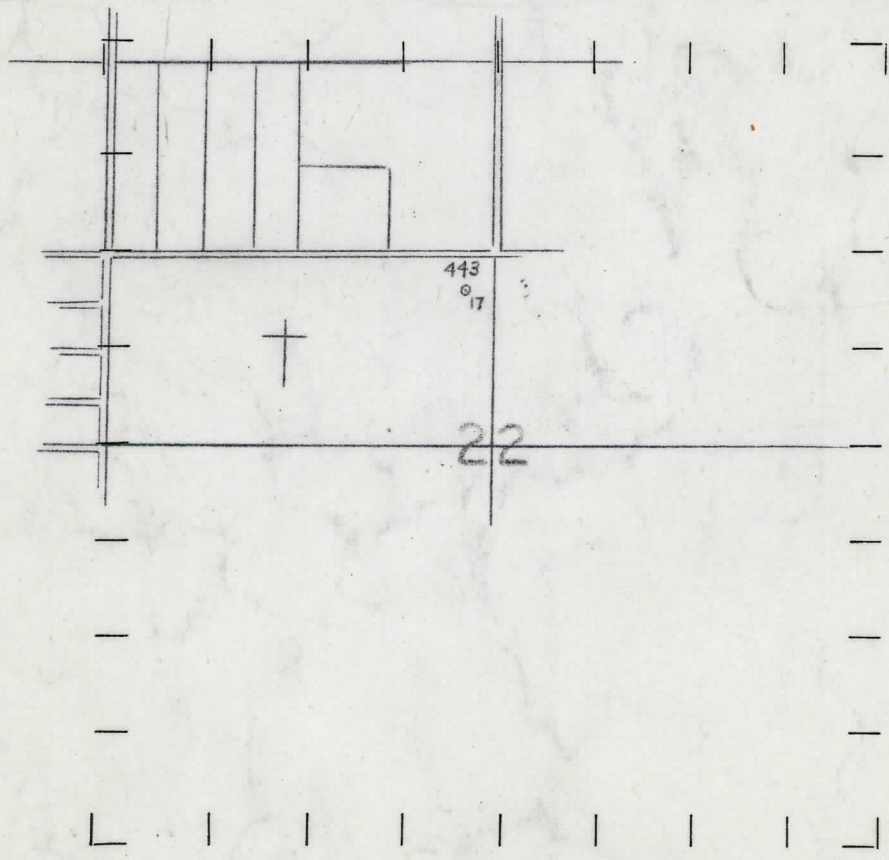
STATE Michigan COUNTY Muskegon DIST. Muskegon SEC. 22 TOWN 10 N RANGE 16 W
WELL No. 17 (SERIAL No. 443) FARM Muskegon Cemetery ACRES

NAME OF STREAM OR WATERS QUADRANGLE SE $\frac{1}{4}$ - NW $\frac{1}{4}$
OPERATOR Continental Gas & Oil Company MAP Muskegon Township, Muskegon County

250 Feet from North Line of Farm
200 " " East " " "
" " South " " "
" " West " " "
1570 Feet from North Line of Section
" " East " " "
" " South " " "
2440 " " West " " "

- LEGEND**
- | | |
|------------------|----------------------|
| ○ LOCATION | ⊕ DRY HOLE |
| ① RIG | ⊕ DRY SHOWING OIL |
| ⊕ DRILLING | ⊕ DRY SHOWING GAS |
| ⊕ GAS WELL | ⊕ ABANDONED LOCATION |
| ● OIL WELL | ⊕ ABANDONED GAS WELL |
| ⊕ SMALL OIL WELL | ⊕ ABANDONED OIL WELL |

NOTE: Below make tracing from map, (when no map is obtainable make sketch) showing farm, center of section, this location with measurements and also wells, dry holes, or other locations in the vicinity of this location. Make copy to keep for reference and send original to Columbus office.



REMARKS: CORRECTED LOCATION

SIGNED _____
Superintendent or Foreman.

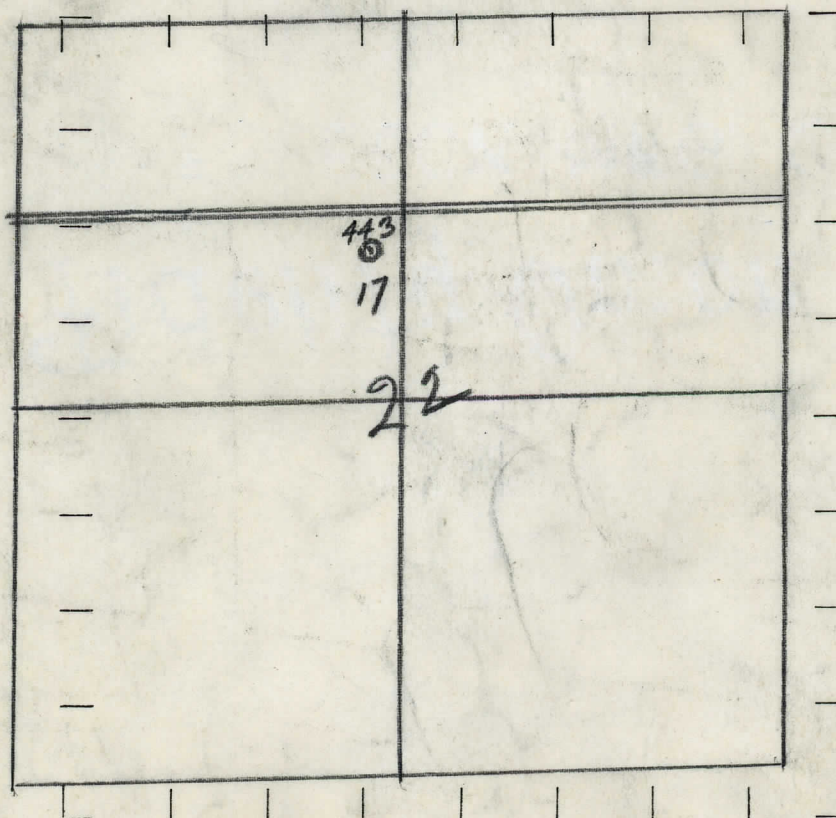
OBSERVATION Continental Gas & Oil Company Muskegon Township Muskegon County
 NAME OF STREAM OR WATERS QUADREANGLE SE - NW
 WELL No. 17 (SERIAL No. 443) FARM Muskegon Cemetery ACRES
 STATE Michigan COUNTY Muskegon DIST. Muskegon SEC. 22 TOWN 10N RANGE 16W
 OPERATOR Continental Gas & Oil Co MAP Muskegon Twp 1-1320
 QUADRANGLE SE-NW

250 Feet from North Line of Farm
200 " " East " " "
 " " South " " "
 " " West " " "
1570' Feet from North Line of Section
 " " East " " "
 " " South " " "
2440' " " West " " "

LEGEND

- | | |
|------------------|----------------------|
| ○ LOCATION | ✦ DRY HOLE |
| ① RIG | ✦ DRY SHOWING OIL |
| ⊕ DRILLING | ✦ DRY SHOWING GAS |
| ⊗ GAS WELL | ⊗ ABANDONED LOCATION |
| ● OIL WELL | ⊗ ABANDONED GAS WELL |
| ⊙ SMALL OIL WELL | ⊙ ABANDONED OIL WELL |

NOTE: Below make tracing from map, (when no map is obtainable make sketch) showing farm, center of section, this location with measurements and also wells, dry holes, or other locations in the vicinity of this location. Make copy to keep for reference and send original to Columbus office.



REMARKS:

Corrected Location

SIGNED

G.H. Zell

Superintendent or Foreman.

NAME OF ELEVATION OR AVIATION
WELL No. 17 (SERIAL No. 443) FARM City of Muskegon ACRES
NAME OF STREAM OR WATERS
OPERATOR Continental Gas & Oil Co. MAP Muskegon Township, Muskegon County
STATE Michigan COUNTY Muskegon TWP Muskegon SEC 22 TOWN 10 N RANGE 15 W
PREC.

WELL No. 17 (SERIAL No. 443) FARM City of Muskegon ACRES

NAME OF STREAM OR WATERS QUADRANGLE SE 1/4 - NW 1/4

OPERATOR Continental Gas & Oil Co. MAP Muskegon Township, Muskegon County

300 Feet from North Line of Farm

600 " " East " " "

" " South " " "

" " West " " "

1820 Feet from North Line of Section

" " East " " "

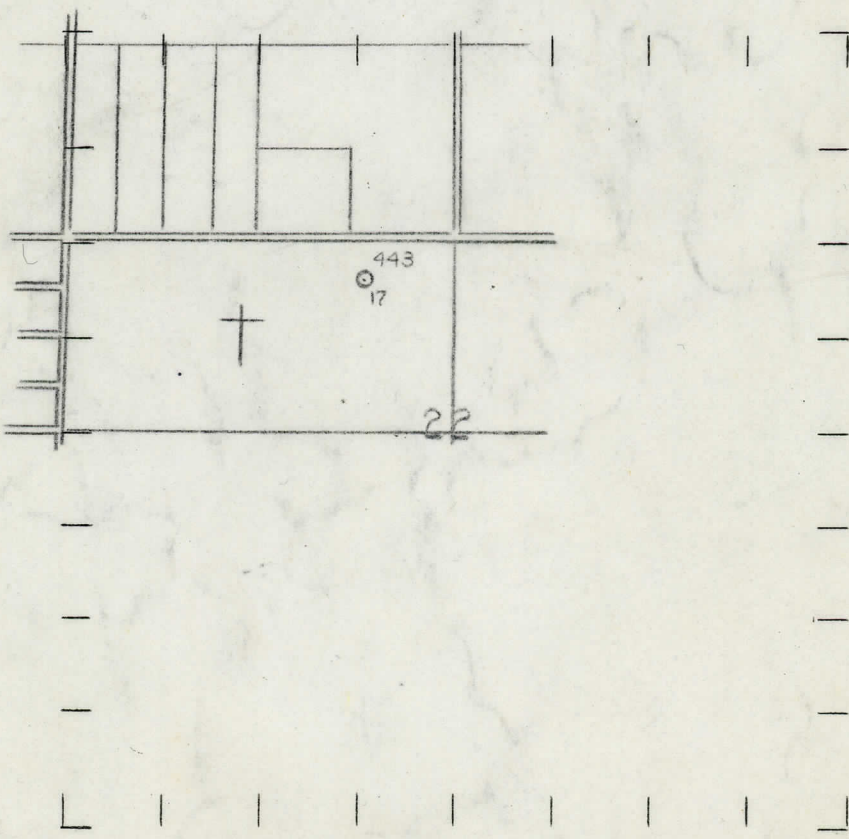
" " South " " "

2040 " " West " " "

LEGEND

- | | |
|------------------|----------------------|
| ○ LOCATION | ⊕ DRY HOLE |
| ① RIG | ⊕ DRY SHOWING OIL |
| ⊕ DRILLING | ⊕ DRY SHOWING GAS |
| ⊕ GAS WELL | ⊕ ABANDONED LOCATION |
| ● OIL WELL | ⊕ ABANDONED GAS WELL |
| ⊕ SMALL OIL WELL | ⊕ ABANDONED OIL WELL |

NOTE: Below make tracing from map, (when no map is obtainable make sketch) showing farm, center of section, this location with measurements and also wells, dry holes, or other locations in the vicinity of this location. Make copy to keep for reference and send original to Columbus office.



REMARKS:

SIGNED

Superintendent or Foreman.

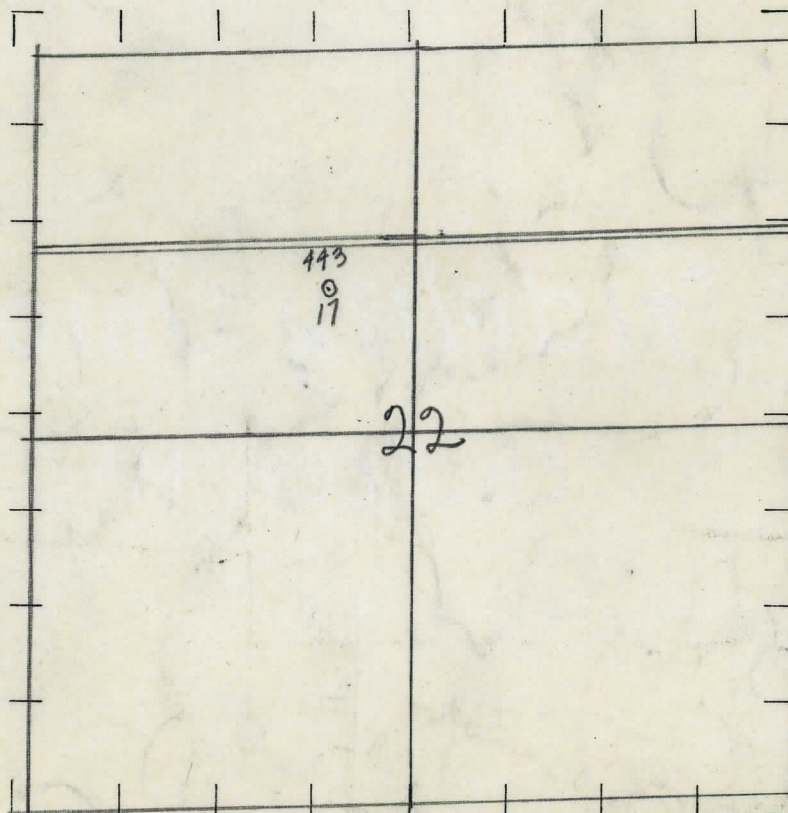
OBSERVATION CONTINENTAL GAS & OIL CO. N.V.B. MUSKEGON TOWNSHIP MUSKEGON COUNTY
 NAME OF STREAM OR WATERS OLIVEBRIDGE
 WELL NO. 17 (SERIAL NO. 443) FARM City of Muskegon
 STATE Michigan COUNTY Muskegon TWP. 17 N 3 R 22 W SEC. 22 TOWN 10 N RANGE 16 W
 WELL No. 17 (SERIAL No. 443) FARM City of Muskegon
 NAME OF STREAM OR WATERS QUADRANGLE SE-NW
 OPERATOR Continental Gas & Oil Co. MAP Muskegon Co. Muskegon Twp

300 Feet from North Line of Farm
 600 " " East " " "
 " " South " " "
 " " West " " "
 1620 Feet from North Line of Section
 " " East " " "
 " " South " " "
 2040 " " West " " "

LEGEND

- | | |
|------------------|----------------------|
| ○ LOCATION | ✦ DRY HOLE |
| ① RIG | ✦ DRY SHOWING OIL |
| ⊕ DRILLING | ✦ DRY SHOWING GAS |
| ⊗ GAS WELL | ✦ ABANDONED LOCATION |
| ● OIL WELL | ✦ ABANDONED GAS WELL |
| ⬤ SMALL OIL WELL | ✦ ABANDONED OIL WELL |

NOTE: Below make tracing from map, (when no map is obtainable make sketch) showing farm, center of section, this location with measurements and also wells, dry holes, or other locations in the vicinity of this location. Make copy to keep for reference and send original to Columbus office.



REMARKS:

SIGNED

W. B. Bell

Superintendent or Foreman.

SUPT. OR FOREMAN