



Western Michigan University
ScholarWorks at WMU

Legacy Scout Tickets from Pure Oil Company

8-20-2021

MGRRE_PureOilScoutTickets_City of Muskegon_18_21121007050000

MGRRE
Western Michigan University

Follow this and additional works at: <https://scholarworks.wmich.edu/pure>



Part of the Geology Commons

WMU ScholarWorks Citation

MGRRE, "MGRRE_PureOilScoutTickets_City of Muskegon_18_21121007050000" (2021). *Legacy Scout Tickets from Pure Oil Company*. 7312.
<https://scholarworks.wmich.edu/pure/7312>

This Document is brought to you for free and open access via ScholarWorks at WMU. It has been accepted for inclusion in Legacy Scout Tickets from Pure Oil Company by an authorized administrator of ScholarWorks at WMU. See the National Digital Catalogue - Science Base Catalogue for more collections submitted by MGRRE.



MGRRE_PureOilScoutTickets_City of Muskegon_18_21121007050000

API 21121007050000

Permit Number 705

Lease Name City of Muskegon

Well Number 18

County Muskegon

Township 10N

Range 16W

Section 22

2021 DEQ or Pure co_name ContinentAL Gas and Oil Company

Pure Number 450

Latitude 43.23719

Longitude -86.19673

THE PURE OIL COMPANY

DATE August 17, 1929

LOCATION REPORT

No. 450

STATE Michigan COUNTY Muskegon DIST. Muskegon SEC. 22 TOWN 10 N RANGE 16 W
 WELL No. 18 (SERIAL No. 450) FARM _____ ACRES _____
 PREC. County of Muskegon

NAME OF STREAM OR WATERS _____ QUADRANGLE SE $\frac{1}{4}$ - SW $\frac{1}{4}$

OPERATOR Continental Gas & Oil Co. MAP Muskegon Township, Muskegon County

250 Feet from North Line of Farm
660 " " East " " "
 " " South " " "
 " " West " " "
 Feet from North Line of Section
 " " East " " "
1070 " " South " " "
1980 " " West " " "

LEGEND

O LOCATION

① RIG

⊕ DRILLING

⊗ GAS WELL

● OIL WELL

◆ SMALL OIL WELL

⊕ DRY HOLE

⊕ DRY SHOWING OIL

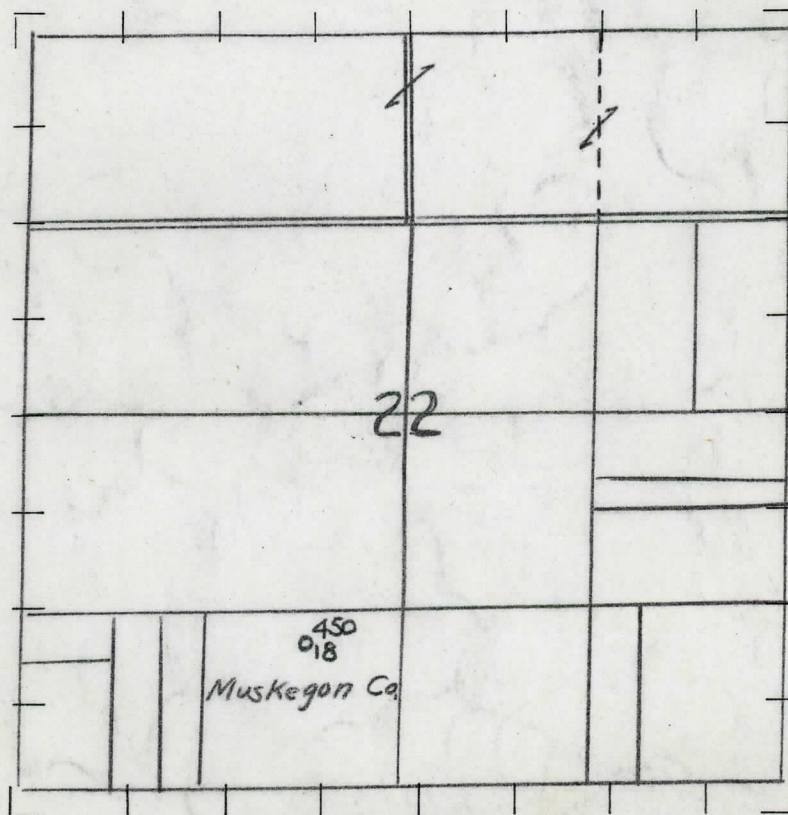
⊕ DRY SHOWING GAS

⊗ ABANDONED LOCATION

⊗ ABANDONED GAS WELL

⊗ ABANDONED OIL WELL

NOTE: Below make tracing from map, (when no map is obtainable make sketch) showing farm, center of section, this location with measurements and also wells, dry holes, or other locations in the vicinity of this location. Make copy to keep for reference and send original to Columbus office.



REMARKS:

SIGNED _____

Superintendent or Foreman.

DATE 8/10/29

THE PURE OIL COMPANY

STATE Michigan COUNTY Muskegon DIST. Muskegon SEC. 22 TOWN 10N RANGE 16W

WELL No. 18 (SERIAL No. 450) FARM County of Muskegon ACRES

NAME OF STREAM OR WATERS QUADRANGLE SE-SW

OPERATOR Continental Gas & Oil Co MAP Muskegon Co, Muskegon Twp

250 Feet from North Line of Farm

660 " " East " " "

" " South " " "

" " West " " "

Feet from North Line of Section

" " East " " "

1070 " " South " " "

1980 " " West " " "

LEGEND

○ LOCATION

① RIG

⊕ DRILLING

⊗ GAS WELL

● OIL WELL

⬮ SMALL OIL WELL

⬮ DRY HOLE

⬮ DRY SHOWING OIL

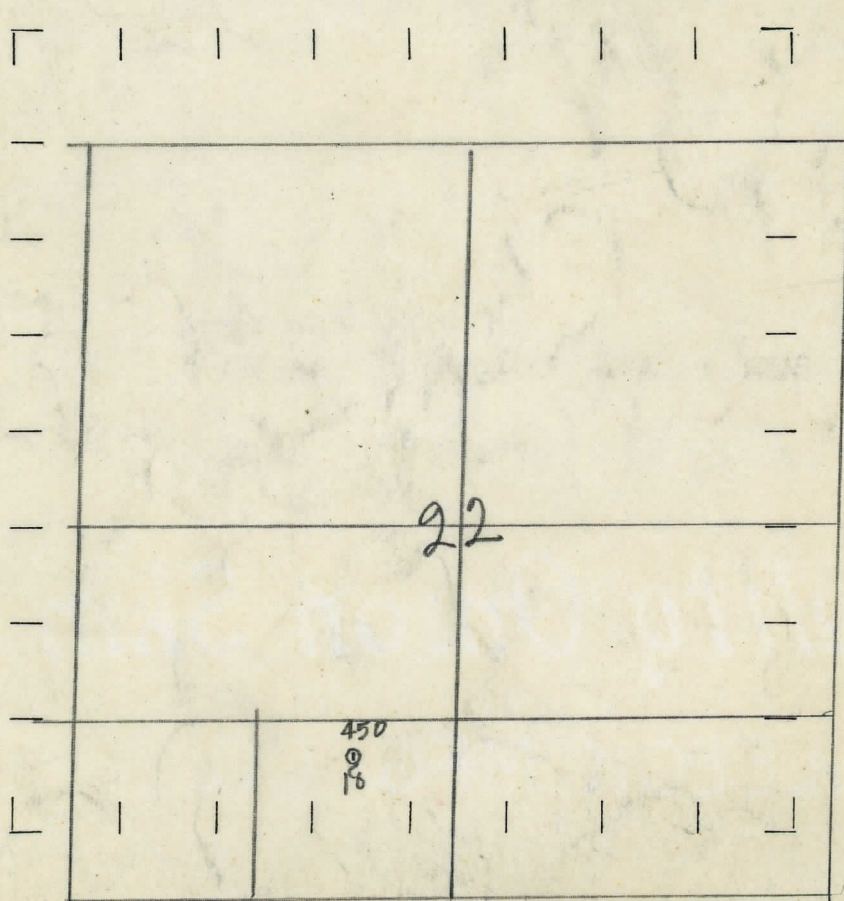
⬮ DRY SHOWING GAS

⬮ ABANDONED LOCATION

⬮ ABANDONED GAS WELL

⬮ ABANDONED OIL WELL

NOTE: Below make tracing from map, (when no map is obtainable make sketch) showing farm, center of section, this location with measurements and also wells, dry holes, or other locations in the vicinity of this location. Make copy to keep for reference and send original to Columbus office.



REMARKS:

SIGNED

G. H. Bell

Superintendent or Foreman.

Michigan Producing DIVISION

COMPLETION RECORD

No. -450-

WELL No. 18 (SERIAL No. 450) FARM County of Muskegon ACRES 1.00

NAME OF STREAM OR WATERS _____ QUADRANGLE _____

OPERATOR Continental Gas & Oil Co. MAP Muskegon Co. Muskegon Twp.

LOCATION REPORT SENT IN (DATE) August 17, 1929.

WELL STARTED (DATE) August 1929. WELL COMPLETED (DATE) Sept. 21, 1929.

OIL WELL

GAS WELL

~~DRY~~ ~~14~~ ~~14~~

ABANDONED WEXI

CROSS OUT THREE OF THE ABOVE
WELL RECORD

DATE OF SHOT _____ NUMBER OF QUARTS _____

1st 24 HOURS PRODUCTION	20 bbls.	BARRELS OR FEET
-------------------------	----------	-----------------

[illegible][illegible]

4th " "	"
---------	---

5th " " " " " "

SAND AND CASING

[illegible]

REMARKS.

NOTE:—MAKE COPY TO KEEP FOR REFERENCE AND SEND ORIGINAL TO CHICAGO OFFICE. LIST MATERIAL CHARGEABLE TO WELL ON OTHER SIDE.

SIGNED

SUPT. OR FOREMAN