



Western Michigan University
ScholarWorks at WMU

Legacy Scout Tickets from Pure Oil Company

8-20-2021

MGRRE_PureOilScoutTickets_Andree, R._3_21121006600000

MGRRE

Western Michigan University

Follow this and additional works at: <https://scholarworks.wmich.edu/pure>



Part of the Geology Commons

WMU ScholarWorks Citation

MGRRE, "MGRRE_PureOilScoutTickets_Andree, R._3_21121006600000" (2021). *Legacy Scout Tickets from Pure Oil Company*. 7313.

<https://scholarworks.wmich.edu/pure/7313>

This Document is brought to you for free and open access via ScholarWorks at WMU. It has been accepted for inclusion in Legacy Scout Tickets from Pure Oil Company by an authorized administrator of ScholarWorks at WMU. See the National Digital Catalogue - Science Base Catalogue for more collections submitted by MGRRE.



MGRRE_PureOilScoutTickets_Andree, R._3_21121006600000

API 21121006600000

Permit Number 660

Lease Name Andree, R.

Well Number 3

County Muskegon

Township 10N

Range 17W

Section 12

2021 DEQ or Pure co_name Nelson and Witt, Incorporated

Pure Number 451

Latitude 43.26692

Longitude -86.26279

THE PURE OIL COMPANY

DATE August 17, 1929.

LOCATION REPORT

No. 451STATE Michigan COUNTY Muskegon DIST. Laketon TWP. Laketon SEC. 12 TOWN 10N RANGE 17 W.WELL No. 3 (SERIAL No. 451) FARM R. Andree ACRESNAME OF STREAM OR WATERS QUADRANGLE SE $\frac{1}{4}$ - SW $\frac{1}{4}$ OPERATOR Witt & Nelson MAP Laketon Township, Muskegon County1480 Feet from North Line of Farm

" " East " " "

" " South " " "

160 " " West " " "

Feet from North Line of Section

" " East " " "

" " South " " "

" " West " " "

LEGEND

O LOCATION

① RIG

⊕ DRILLING

⊗ GAS WELL

● OIL WELL

⦿ SMALL OIL WELL

⦿ DRY HOLE

⦿ DRY SHOWING OIL

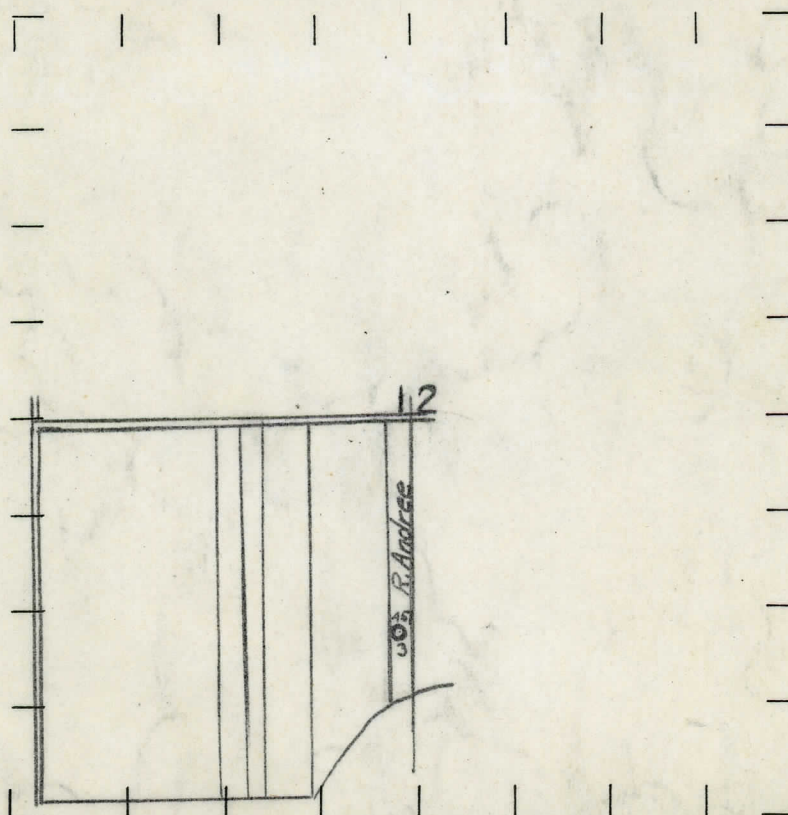
⦿ DRY SHOWING GAS

⦿ ABANDONED LOCATION

⦿ ABANDONED GAS WELL

⦿ ABANDONED OIL WELL

NOTE: Below make tracing from map, (when no map is obtainable make sketch) showing farm, center of section, this location with measurements and also wells, dry holes, or other locations in the vicinity of this location. Make copy to keep for reference and send original to Columbus office.



REMARKS:

SIGNED

Superintendent or Foreman.

DATE 7/10/29

LOCATION REPORT

No.

DATE 7/10/29

LOCATION REPORT

No.

STATE Michigan COUNTY Muskegon DIST. Laketon SEC. 12 TOWN 10 N RANGE 17 W
WELL No. 3 (SERIAL No. 451) FARM R. Andree ACRESNAME OF STREAM OR WATERS QUADRANGLE SE-SWOPERATOR Witt & Nelson MAP Muskegon Co. Laketon Twp1480 Feet from North Line of Farm

" " East " " "

" " South " " "

160 " " West " " "

Feet from North Line of Section

" " East " " "

" " South " " "

" " West " " "

LEGEND

O LOCATION

① RIG

⊕ DRILLING

⊗ GAS WELL

● OIL WELL

⊙ SMALL OIL WELL

⊕ DRY HOLE

⊕ DRY SHOWING OIL

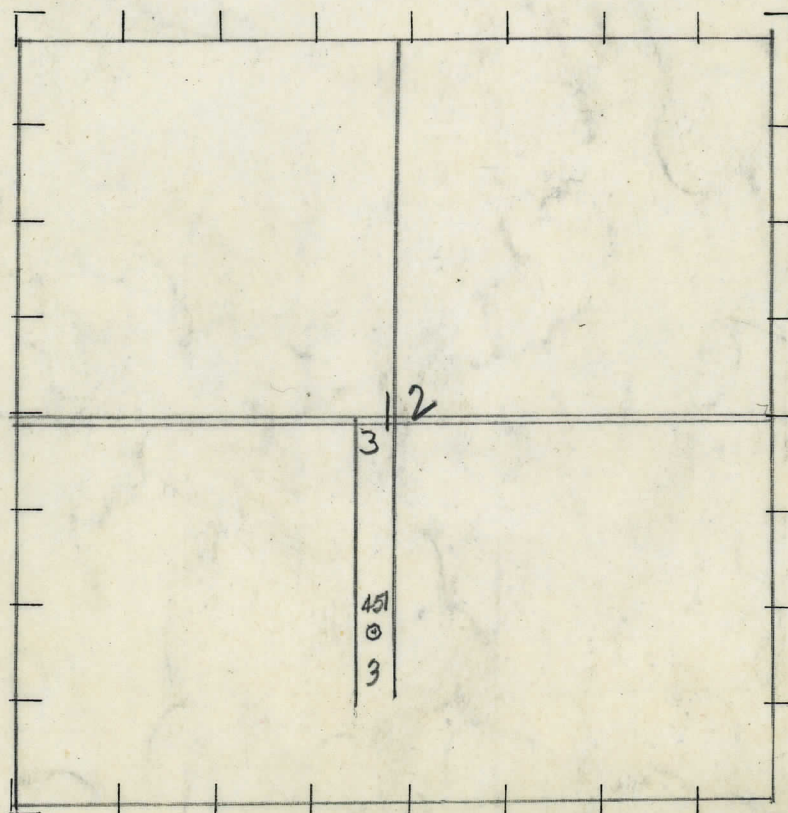
⊕ DRY SHOWING GAS

⊕ ABANDONED LOCATION

⊕ ABANDONED GAS WELL

⊕ ABANDONED OIL WELL

NOTE: Below make tracing from map, (when no map is obtainable make sketch) showing farm, center of section, this location with measurements and also wells, dry holes, or other locations in the vicinity of this location. Make copy to keep for reference and send original to Columbus office.



REMARKS:

SIGNED

G. H. Bell

Superintendent or Foreman.

COMPLETION RECORD

No. 451

DATE Sept. 7th, 1929.

STATE Michigan COUNTY Lapeer DIST.
TWP. Laketon SEC. 12 TOWN 10 N RANGE 17 W
PREC.

WELL No. 3 (SERIAL No. 451) FARM R. Andree ACRES

NAME OF STREAM OR WATERS _____ QUADRANGLE _____

OPERATOR Witt-Nelson MAP

LOCATION REPORT SENT IN (DATE) 8/17/29

WELL STARTED (DATE) August 1929/ WELL COMPLETED (DATE) Sept. 7th. 1929.

OIL WELL

GAS WELL

DRY HOLE

ABANDONED WELL

CROSS OUT THREE OF THE ABOVE
WELL RECORD

DATE OF SHOT _____ NUMBER OF QUARTS _____

1st 24 HOURS PRODUCTION 500 bbls. _____ BARRELS OR FEET

2nd " " " " " "

3rd " " " " " " " "

4th " " " " " " " "

5th " " "

SAND AND CASING

[illegible]

REMARKS.

NOTE:—MAKE COPY TO KEEP FOR REFERENCE AND SEND ORIGINAL TO CHICAGO OFFICE. LIST MATERIAL CHARGEABLE TO WELL ON OTHER SIDE.

SIGNED.

SUPT. OR FOREMAN