



Western Michigan University
ScholarWorks at WMU

Legacy Scout Tickets from Pure Oil Company

8-20-2021

MGRRE_PureOilScoutTickets_City of Muskegon_19_21121007570000

MGRRE
Western Michigan University

Follow this and additional works at: <https://scholarworks.wmich.edu/pure>



Part of the Geology Commons

WMU ScholarWorks Citation

MGRRE, "MGRRE_PureOilScoutTickets_City of Muskegon_19_21121007570000" (2021). *Legacy Scout Tickets from Pure Oil Company*. 7323.
<https://scholarworks.wmich.edu/pure/7323>

This Document is brought to you for free and open access via ScholarWorks at WMU. It has been accepted for inclusion in Legacy Scout Tickets from Pure Oil Company by an authorized administrator of ScholarWorks at WMU. See the National Digital Catalogue - Science Base Catalogue for more collections submitted by MGRRE.



MGRRE_PureOilScoutTickets_City of Muskegon_19_21121007570000

API 21121007570000

Permit Number 757

Lease Name City of Muskegon

Well Number 19

County Muskegon

Township 10N

Range 16W

Section 22

2021 DEQ or Pure co_name Continental Gas and Oil Company

Pure Number 461

Latitude 43.24463

Longitude -86.19752

THE PURE OIL COMPANY

LOCATION REPORT

No.

461

DATE Sept. 6, 1929.STATE Michigan COUNTY Muskegon DIST. Muskegon SEC. 22 TOWN 10 N RANGE 16 WWELL No. 19 (SERIAL No. 461) FARM Muskegon Cemetery ACRESNAME OF STREAM OR WATERS QUADRANGLE SE $\frac{1}{4}$ - NW $\frac{1}{4}$ OPERATOR Continental Gas & Oil Co. MAP Muskegon Twp., Muskegon Co. 1320'200 Feet from North Line of Farm900 " " East " " "

" " South " " "

" " West " " "

1520 Feet from North Line of Section

" " East " " "

" " South " " "

1740 " " West " " "

LEGEND

O LOCATION

① RIG

⊕ DRILLING

⊗ GAS WELL

● OIL WELL

◆ SMALL OIL WELL

⊕ DRY HOLE

⊕ DRY SHOWING OIL

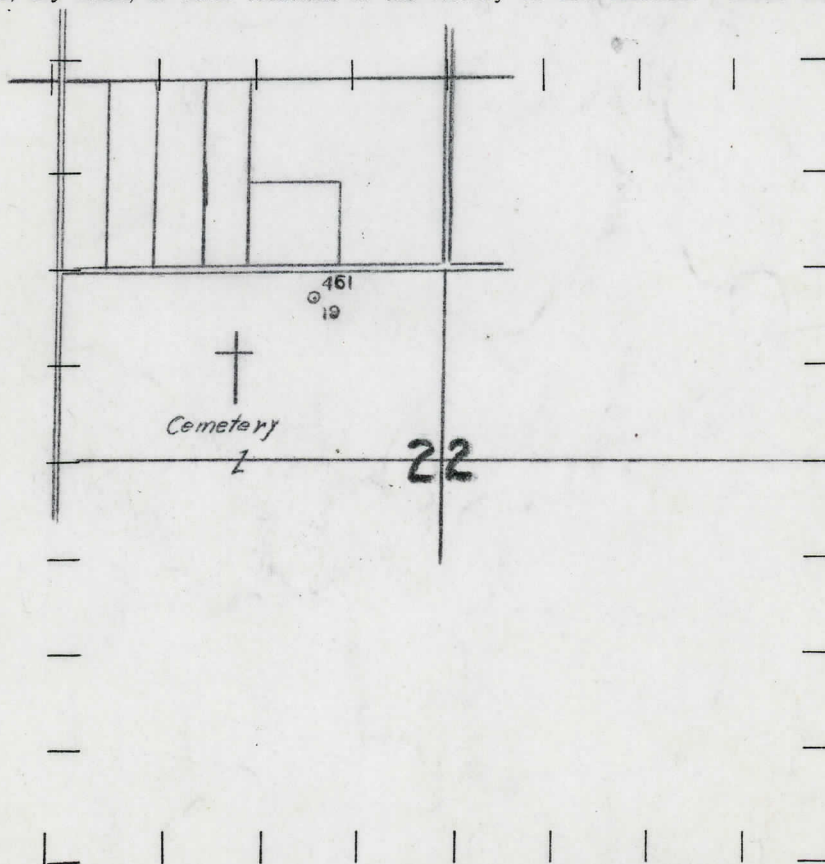
⊕ DRY SHOWING GAS

⊗ ABANDONED LOCATION

⊗ ABANDONED GAS WELL

⊗ ABANDONED OIL WELL

NOTE: Below make tracing from map, (when no map is obtainable make sketch) showing farm, center of section, this location with measurements and also wells, dry holes, or other locations in the vicinity of this location. Make copy to keep for reference and send original to Columbus office.



REMARKS:

SIGNED

Superintendent or Foreman.

Superintendent or Foreman.

