



Western Michigan University
ScholarWorks at WMU

Legacy Scout Tickets from Pure Oil Company

8-20-2021

**MGRRE_PureOilScoutTickets_City of
Muskegon_20_21121008810000**

MGRRE
Western Michigan University

Follow this and additional works at: <https://scholarworks.wmich.edu/pure>



Part of the Geology Commons

WMU ScholarWorks Citation

MGRRE, "MGRRE_PureOilScoutTickets_City of Muskegon_20_21121008810000" (2021). *Legacy Scout Tickets from Pure Oil Company*. 7362.
<https://scholarworks.wmich.edu/pure/7362>

This Document is brought to you for free and open access via ScholarWorks at WMU. It has been accepted for inclusion in Legacy Scout Tickets from Pure Oil Company by an authorized administrator of ScholarWorks at WMU. See the National Digital Catalogue - Science Base Catalogue for more collections submitted by MGRRE.



MGRRE_PureOilScoutTickets_City of Muskegon_20_21121008810000

API 21121008810000

Permit Number 881

Lease Name City of Muskegon

Well Number 20

County Muskegon

Township 10N

Range 16W

Section 22

2021 DEQ or Pure co_name Continental Gas and Oil Company

Pure Number 501

Latitude 43.24299

Longitude -86.19499

THE PURE OIL COMPANY

DATE Jan. 17, 1930

LOCATION REPORT

No. 501STATE Michigan COUNTY Muskegon DIST. Muskegon SEC. 22 TOWN 10N RANGE 16W
WELL No. 20 (SERIAL No. 501) FARM Muskegon Cemetery ACRESNAME OF STREAM OR WATERS _____ QUADRANGLE SE NWOPERATOR Continental Gas & Oil Co. MAP Muskegon Twp. Muskegon County800 Feet from North Line of Farm250 " " East " " "

" " South " " "

" " West " " "

5440 2/20' Feet from North Line of Section

" " East " " "

" " South " " "

2390 " " West " " "LEGEND

O LOCATION

① RIG

⊕ DRILLING

⊗ GAS WELL

● OIL WELL

⬮ SMALL OIL WELL

⬮ DRY HOLE

⬮ DRY SHOWING OIL

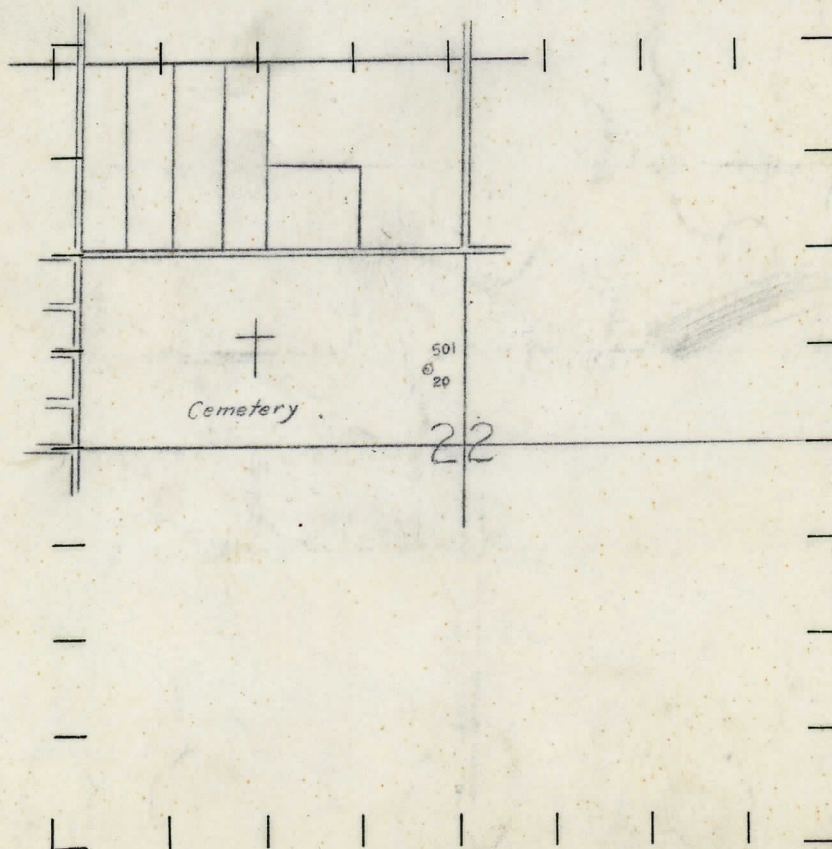
⬮ DRY SHOWING GAS

⬮ ABANDONED LOCATION

⬮ ABANDONED GAS WELL

⬮ ABANDONED OIL WELL

NOTE: Below make tracing from map, (when no map is obtainable make sketch) showing farm, center of section, this location with measurements and also wells, dry holes, or other locations in the vicinity of this location. Make copy to keep for reference and send original to Columbus office.



REMARKS:

SIGNED

Superintendent or Foreman.

L.W. ✓
Twp. Map
1/18

DATE 7/16/30

LOCATION REPORT

No. 501

STATE Michigan COUNTY Muskegon DIST. Muskegon SEC. 22 TOWN 10N RANGE 16W

WELL No. 20 (SERIAL No. 501) FARM Muskegon Cemetery ACRES

NAME OF STREAM OR WATERS QUADRANGLE SE-NW

OPERATOR Continental Gas & Oil Co MAP Muskegon Twp. 1"=1320' Muskegon Co.

800 Feet from North Line of Farm

250 " " East " " "

" " South " " "

" " West " " "

3440 Feet from North Line of Section

" " East " " "

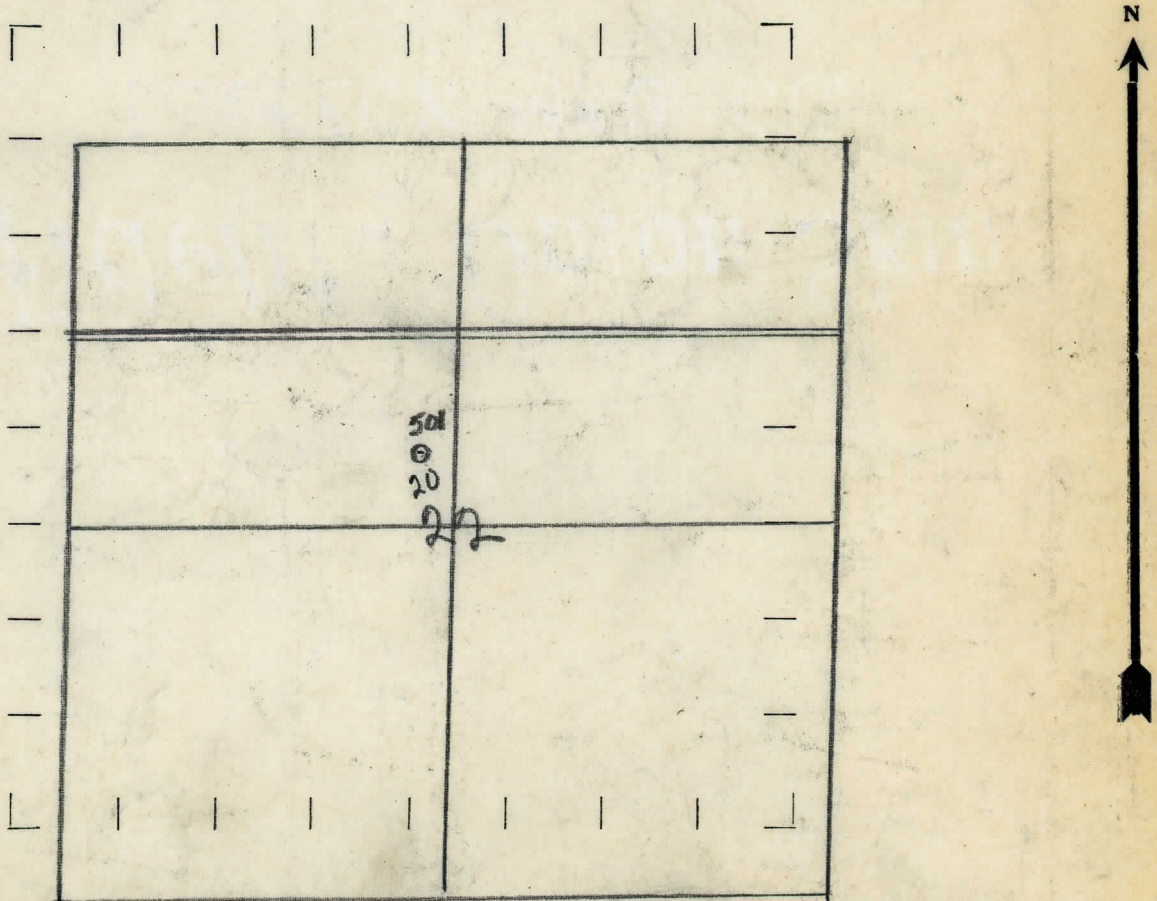
" " South " " "

2390' " " West " " "

LEGEND

- O LOCATION
- ⊙ RIG
- ⊕ DRILLING
- ⊗ GAS WELL
- OIL WELL
- ⦿ SMALL OIL WELL
- ⬢ DRY HOLE
- ⬢ DRY SHOWING OIL
- ⬢ DRY SHOWING GAS
- ⬢ ABANDONED LOCATION
- ⬢ ABANDONED GAS WELL
- ⬢ ABANDONED OIL WELL

NOTE: Below make tracing from map, (when no map is obtainable make sketch) showing farm, center of section, this location with measurements and also wells, dry holes, or other locations in the vicinity of this location. Make copy to keep for reference and send original to Columbus office.



REMARKS:

SIGNED

G. H. Bell

Superintendent or Foreman.

DATE		STATE		COUNTY		DIST. TWP. PREC.		DIVISION		No.	
Feb. 22nd, 1930.		Michigan		Muskegon		Muskegon		22		-501-	
WELL No. 20		(SERIAL No. 501)		FARM Muskegon Cemetery		ACRES		SEC. 22		TOWN 10 N RANGE 16 W	
NAME OF STREAM OR WATERS								QUADRANGLE			
OPERATOR Cont. Gas & Oil Co.						MAP Muskegon Twp. Muskegon Co.					
LOCATION REPORT SENT IN (DATE)						Jan. 17th, 1930.					
WELL STARTED (DATE)						January 1930.					
WELL COMPLETED (DATE)						Feb. 22nd, 1930.					

~~ABANDONED WELL~~

CROSS OUT THREE OF THE ABOVE
WELL RECORD

DATE OF SHOT				NUMBER OF QUARTS		
1st 24 HOURS PRODUCTION				BARRELS OR FEET		
2nd	"	"	"		"	"
3rd	"	"	"		"	"
4th	"	"	"		"	"
5th	"	"	"		"	"

SAND AND CASING

[illegible]REMARKS No inf.

SIGNED _____ SUPT. OR FOREMAN _____