



Western Michigan University
ScholarWorks at WMU

Legacy Scout Tickets from Pure Oil Company

8-20-2021

MGRRE_PureOilScoutTickets_Bowsuma, J._1_unk

MGRRE

Western Michigan University

Follow this and additional works at: <https://scholarworks.wmich.edu/pure>



Part of the Geology Commons

WMU ScholarWorks Citation

MGRRE, "MGRRE_PureOilScoutTickets_Bowsuma, J._1_unk" (2021). *Legacy Scout Tickets from Pure Oil Company*. 7383.

<https://scholarworks.wmich.edu/pure/7383>

This Document is brought to you for free and open access via ScholarWorks at WMU. It has been accepted for inclusion in Legacy Scout Tickets from Pure Oil Company by an authorized administrator of ScholarWorks at WMU. See the National Digital Catalogue - Science Base Catalogue for more collections submitted by MGRRE.



MGRRE_PureOilScoutTickets_Bowsuma, J._1_unk

API unk

Permit Number unk

Lease Name Bowsuma, J.

Well Number 1

County Muskegon

Township 10N

Range 16W

Section 5

2021 DEQ or Pure co_name Muskegon Oil Corp

Pure Number 522

Latitude 43.2867509

Longitude -86.2333778

THE PURE OIL COMPANY
LOCATION REPORT

No. 522

DATE Sept. 20, 1930.

STATE Michigan COUNTY Muskegon DIST. Muskegon SEC. 5 TOWN 10 N RANGE 16 W
 WELL No. 1 (SERIAL No. 522) FARM J Bowsema PREC. Bowsema ACRES
 NAME OF STREAM OR WATERS _____ QUADRANGLE SW cor. N $\frac{1}{2}$ - NE frl $\frac{1}{4}$
 OPERATOR Muskegon Oil Corp. MAP 1320' = 1"

Feet from North Line of Farm

" " East " " "

330

" " South " " "

330

" " West " " "

930

Feet from North Line of Section

2310

" " East " " "

" " South " " "

330 North of E & West $\frac{1}{4}$ " " "

LEGEND

O LOCATION

① RIG

⊕ DRILLING

⊗ GAS WELL

● OIL WELL

⬮ SMALL OIL WELL

⬮ DRY HOLE

⬮ DRY SHOWING OIL

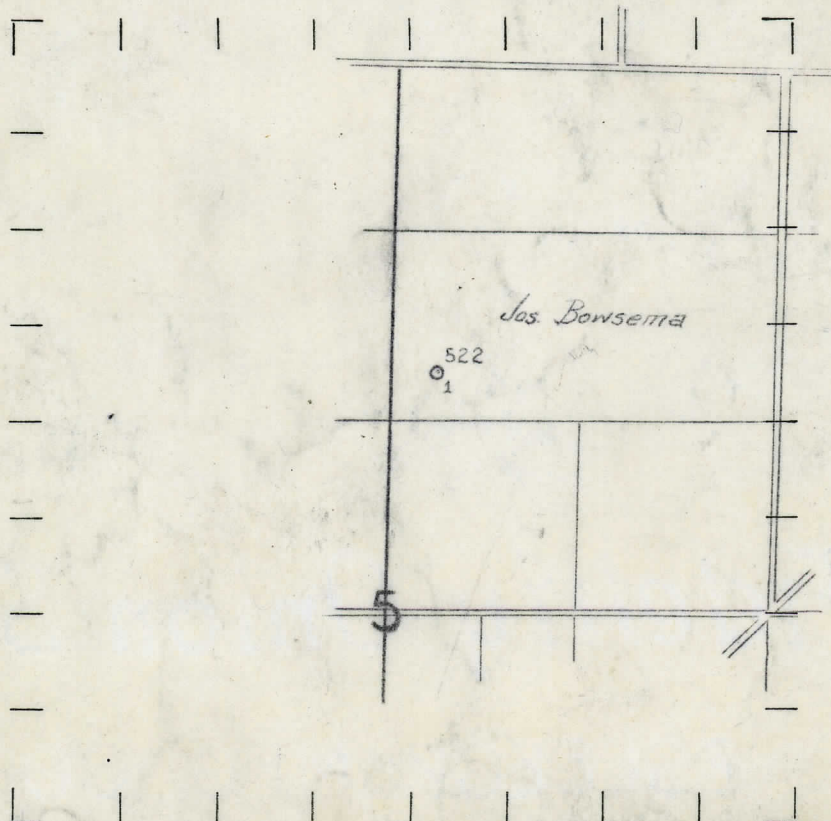
⬮ DRY SHOWING GAS

⬮ ABANDONED LOCATION

⬮ ABANDONED GAS WELL

⬮ ABANDONED OIL WELL

NOTE: Below make tracing from map, (when no map is obtainable make sketch) showing farm, center of section, this location with measurements and also wells, dry holes, or other locations in the vicinity of this location. Make copy to keep for reference and send original to Columbus office.



REMARKS:

SIGNED

Superintendent or Foreman.

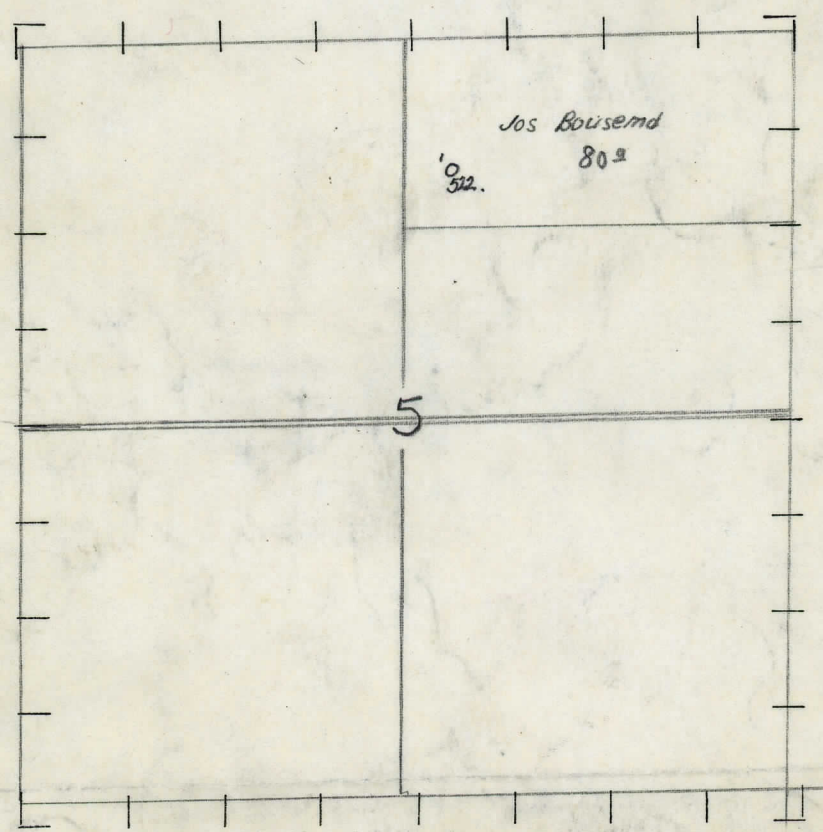
DATE 7/1/00 LOCATION KEFOKI NO. 522

STATE Michigan COUNTY Muskegon DIST. Muskegon SEC 5 TOWN 10N RANGE 16W
WELL No. 1 (SERIAL No. 522) FARM J. Bowsema ACRES
NAME OF STREAM OR WATERS QUADRANGLE SW 1/4 NW 1/4 NE 1/4
OPERATOR Muskegon Oil Corp MAP 1320' = 1" SW Cor. N 1/2 NE 1/4

Feet from North Line of Farm
330 " " East " " "
330 " " South " " "
990 " " West " " "
Feet from North Line of Section
2310 " " East " " "
" " South " " "
" " West " " "

- LEGEND**
- O LOCATION
 - ① RIG
 - ⊕ DRILLING
 - ⊗ GAS WELL
 - OIL WELL
 - ⦿ SMALL OIL WELL
 - ⦿ DRY HOLE
 - ⦿ DRY SHOWING OIL
 - ⦿ DRY SHOWING GAS
 - ⦿ ABANDONED LOCATION
 - ⦿ ABANDONED GAS WELL
 - ⦿ ABANDONED OIL WELL

NOTE: Below make tracing from map, (when no map is obtainable make sketch) showing farm, center of section, this location with measurements and also wells, dry holes, or other locations in the vicinity of this location. Make copy to keep for reference and send original to Columbus office.



REMARKS:

SIGNED

Superintendent or Foreman.

SUPT. OR FOREMAN

MATERIAL	SIZE	MAKE	QUANTITY	DESCRIPTION
----------	------	------	----------	-------------

DATE February 7, 1931. Michigan Producing DIVISION
COMPLETION RECORD No. - 522 -

STATE Michigan COUNTY Muskegon DIST. Muskegon SEC. 5 TOWN 10 N RANGE 16 W
PREC.

WELL No. 1 (SERIAL No. 522) FARM J. Bowsama ACRES

NAME OF STREAM OR WATERS _____ QUADRANGLE SW cor. N¹/₈-NE frl

OPERATOR	Muskegon Oil Corp.	MAP	1320'-1"
----------	--------------------	-----	----------

LOCATION REPORT SENT IN (DATE) 9-20-30

WELL STARTED (DATE) 9-20-30 WELL COMPLETED (DATE) 2-7-31

YOU WELL	WAS WELL	DRY HOLE	ABANDONED WELL

CROSS OUT THREE OF THE ABOVE

WELL RECORD

DATE OF SHOT _____ NUMBER OF QUARTS _____

1st 24 HOURS PRODUCTION dry BARRELS OR FEET

2nd " " "

3rd " " "

4th " " "

5th " " "

SAND AND CASING

[illegible]

REMARKS Show oil 1692-1697' Show gas 1705-1709' Water 2071-2075' Water 2185' Show gas 2195'

NOTE:—MAKE COPY TO KEEP FOR REFERENCE AND SEND ORIGINAL TO CHICAGO OFFICE. LIST MATERIAL CHARGEABLE TO WELL ON OTHER SIDE.

SIGNED _____ SUPT. OR FOREMAN