



Western Michigan University
ScholarWorks at WMU

Legacy Scout Tickets from Pure Oil Company

8-20-2021

MGRRE_PureOilScoutTickets_Cotes, W. C._1_21121014890000

MGRRE

Western Michigan University

Follow this and additional works at: <https://scholarworks.wmich.edu/pure>



Part of the Geology Commons

WMU ScholarWorks Citation

MGRRE, "MGRRE_PureOilScoutTickets_Cotes, W. C._1_21121014890000" (2021). *Legacy Scout Tickets from Pure Oil Company*. 7411.

<https://scholarworks.wmich.edu/pure/7411>

This Document is brought to you for free and open access via ScholarWorks at WMU. It has been accepted for inclusion in Legacy Scout Tickets from Pure Oil Company by an authorized administrator of ScholarWorks at WMU. See the National Digital Catalogue - Science Base Catalogue for more collections submitted by MGRRE.



MGRRE_PureOilScoutTickets_Cotes, W. C._1_21121014890000

API 21121014890000

Permit Number 1489

Lease Name Cotes, W. C.

Well Number 1

County Muskegon

Township 12N

Range 16W

Section 29

2021 DEQ or Pure co_name Old Dutch Oil and Gas Company

Pure Number 550

Latitude 43.40612

Longitude -86.24802

THE PURE OIL COMPANY
LOCATION REPORT

No. 550

DATE 3-31-33

STATE Michigan COUNTY Muskegon DIST. Blue Lake SEC. 29 TOWN 12N RANGE 16W
WELL No. 1 (SERIAL No. 550) FARM W. C. Cotes 80 ACRES
NAME OF STREAM OR WATERS _____ QUADRANGLE S $\frac{1}{2}$ -NW $\frac{1}{4}$
OPERATOR Old Dutch Oil & Gas Co. MAP _____

Feet from North Line of Farm

330

" " East " " "

420

" " South " " "

" " West " " "

2220

Feet from North Line of Section

" " East " " "

" " South " " "

2310

" " West " " "

LEGEND

O LOCATION

① RIG

⊕ DRILLING

⊗ GAS WELL

● OIL WELL

⬮ SMALL OIL WELL

⬮ DRY HOLE

⬮ DRY SHOWING OIL

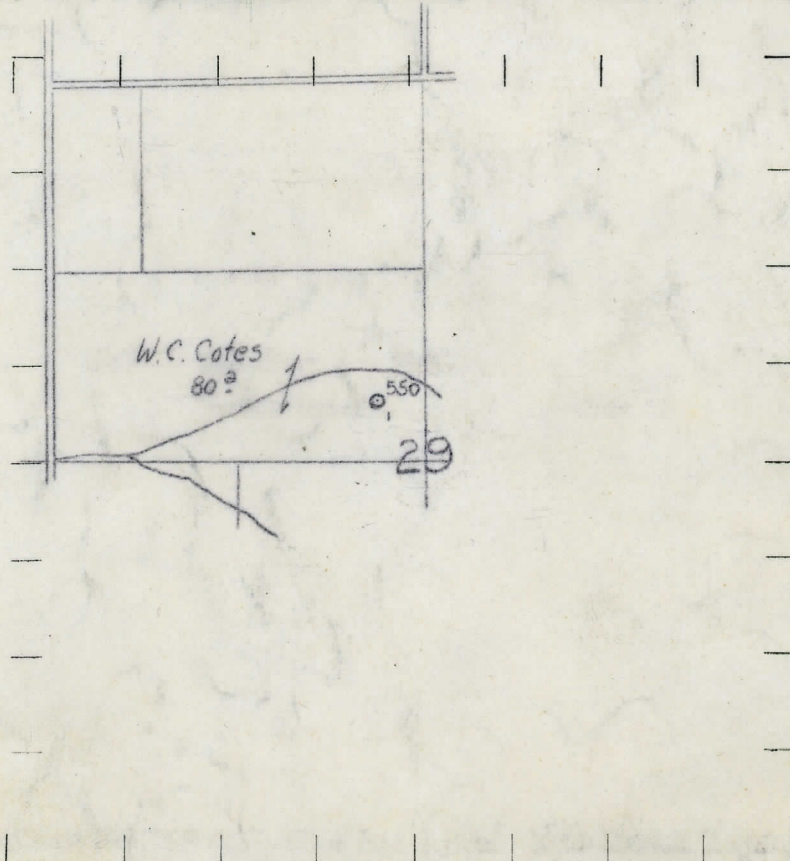
⬮ DRY SHOWING GAS

⬮ ABANDONED LOCATION

⬮ ABANDONED GAS WELL

⬮ ABANDONED OIL WELL

NOTE: Below make tracing from map, (when no map is obtainable make sketch) showing farm, center of section, this location with measurements and also wells, dry holes, or other locations in the vicinity of this location. Make copy to keep for reference and send original to Columbus office.



REMARKS:

SIGNED

Superintendent or Foreman.

THE PURE OIL COMPANY

ГОСУДИОН КЕЪОКІ

140° 55'

STATE Michigan COUNTY Muskegon DIST. Blue Lake SEC. 29 TOWN 12N RANGE 16W
TWP. PREC.

NAME OF STREAM OR WATERS QUADRANGLE S₂-NW₄

OPERATOR Old Dutch Oil & Gas Co. MAP Blue Lake Twp., Muskegon Co.

LOCATION REPORT SENT IN (DATE) 3-31-33

WELL STARTED (DATE) 4-5-33 WELL COMPLETED (DATE) 4-26-33

OIL-WELL

GAS WELL

DRY HOLE

ABANDONED WELL

Elevation

CROSS OUT THREE OF THE ABOVE
WELL RECORD

DATE OF SHOT _____ NUMBER OF QUARTS _____

1st 24 HOURS PRODUCTION	Dry Hole	BARRELS OR FEET

2nd " " " " " "

[illegible]

4th " " "

5th " " "

SAND AND CASING

[illegible]

NOTE:—MAKE COPY TO KEEP FOR REFERENCE AND SEND ORIGINAL TO CHICAGO OFFICE. LIST MATERIAL CHARGEABLE TO WELL ON OTHER SIDE.

SIGNED

G. H. Bell

SUPT. OR FOREMAN