



Western Michigan University  
ScholarWorks at WMU

---

Legacy Scout Tickets from Pure Oil Company

---

8-20-2021

**MGRRE\_PureOilScoutTickets\_Balawender et  
al\_1\_21121037560000**

MGRRE  
*Western Michigan University*

Follow this and additional works at: <https://scholarworks.wmich.edu/pure>



Part of the Geology Commons

---

#### WMU ScholarWorks Citation

MGRRE, "MGRRE\_PureOilScoutTickets\_Balawender et al\_1\_21121037560000" (2021). *Legacy Scout Tickets from Pure Oil Company*. 7421.  
<https://scholarworks.wmich.edu/pure/7421>

This Document is brought to you for free and open access via ScholarWorks at WMU. It has been accepted for inclusion in Legacy Scout Tickets from Pure Oil Company by an authorized administrator of ScholarWorks at WMU. See the National Digital Catalogue - Science Base Catalogue for more collections submitted by MGRRE.



---

**MGRRE\_PureOilScoutTickets\_Balawender et al\_1\_21121037560000**

API 21121037560000

Permit Number 3756

Lease Name Balawender et al

Well Number 1

County Muskegon

Township 09N

Range 14W

Section 18

2021 DEQ or Pure co\_name Lentz and Miller and Witt, C. A.

Pure Number 580

Latitude 43.16604

Longitude -86.02266

DATE December 23, 1936

LOCATION REPORT

No. 580

STATE Michigan COUNTY Muskegon DIST. Ravenna TWP. Ravenna SEC. 18 TOWN 9 N RANGE 14 W  
WELL No. 1 (SERIAL No. 580) FARM Boston-Southland-Balawender & Witt ACRES 14 W

NAME OF STREAM OR WATERS \_\_\_\_\_ QUADRANGLE 8-SW.

OPERATOR Lentz & Miller and Witt Map Ravenna Township, Muskegon County  
Lentz-Miller & Witt Ravenna-Musk.

Feet from North Line of Farm

" " East " " "

1314.5 " " South " " "

1327.5 " " West " " "

Feet from North Line of Section

" " East " " "

1314.5 " " South " " "

1327.5 " " West " " "

LEGEND

○ LOCATION

① RIG

⊕ DRILLING

☀ GAS WELL

● OIL WELL

◆ SMALL OIL WELL

⊖ DRY HOLE

◆ DRY SHOWING OIL

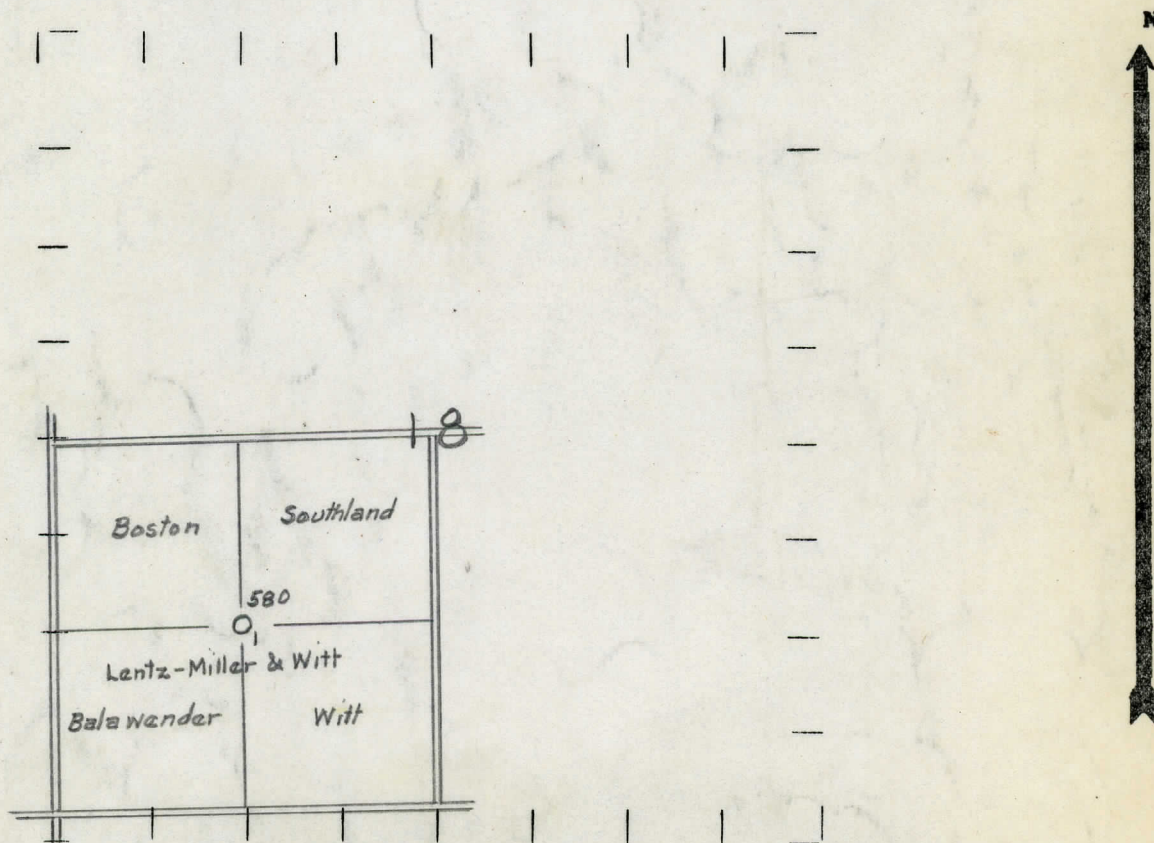
⊖ DRY SHOWING GAS

⊖ ABANDONED LOCATION

☀ ABANDONED GAS WELL

● ABANDONED OIL WELL

NOTE: Below make tracing from map, (when no map is obtainable make sketch) showing farm, center of section, this location with measurements and also wells, dry holes, or other locations in the vicinity of this location.



REMARKS:

SIGNED

R. L. Yeager  
Superintendent or Foreman.



## Michigan Producing Division

# PRODUCTION RECORD

2nd 24 hours after acid

FORMATION AND CASING RECORD

[illegible]

Remarks

Signed

Geo. H. Bell