



Western Michigan University
ScholarWorks at WMU

Legacy Scout Tickets from Pure Oil Company

8-20-2021

**MGRRE_PureOilScoutTickets_Coon, William &
Hazel_1_21121115520000**

MGRRE
Western Michigan University

Follow this and additional works at: <https://scholarworks.wmich.edu/pure>



Part of the Geology Commons

WMU ScholarWorks Citation

MGRRE, "MGRRE_PureOilScoutTickets_Coon, William & Hazel_1_21121115520000" (2021). *Legacy Scout Tickets from Pure Oil Company*. 7505.
<https://scholarworks.wmich.edu/pure/7505>

This Document is brought to you for free and open access via ScholarWorks at WMU. It has been accepted for inclusion in Legacy Scout Tickets from Pure Oil Company by an authorized administrator of ScholarWorks at WMU. See the National Digital Catalogue - Science Base Catalogue for more collections submitted by MGRRE.



MGRRE_PureOilScoutTickets_Coon, William & Hazel_1_21121115520000

API 21121115520000

Permit Number 11552

Lease Name Coon, William & Hazel

Well Number 1

County Muskegon

Township 11N

Range 16W

Section 13

2021 DEQ or Pure co_name Bourret, W. L. and Bolema, Jacob

Pure Number 664

Latitude 43.34273

Longitude -86.16397

THE PURE OIL COMPANY

LOCATION REPORT

Date May 23, 1945

A.F.E. No. _____

Division Mich. Producing District _____Lease Wm. & Hazel CoonAcres _____ Lease No. _____ Elevation _____ Well No. 1 (Serial No. 664)Quadrangle SE - NW - SE Sec. 13 Twp. 11 N Rge. 16 W ~~18 W~~ ~~18 W~~ Dalton Twp. DaltonSurvey _____ County Muskegon State MichiganOperator E. L. Bourret & Jacob Bolema Map Dalton township - Muskegon Co.

		Feet from North Line of Lease				
<u>330</u>	<u>330</u>	" "	East	" "	" "	
<u>330</u>	<u>330</u>	" "	South	" "	" "	
<u>990</u>	<u>990</u>	" "	West	" "	<u>1/4</u>	" "
		Feet from North Line of Section				
		" "	East	" "	" "	
		" "	South	" "	" "	
<u>990</u>	<u>990</u>	" "	West	" "	" "	

LEGEND

○ Location

☼ Gas Well

● Oil Well

☼ Gas - Distillate Well

○ or ○ Dry Hole

● Dry Showing Oil

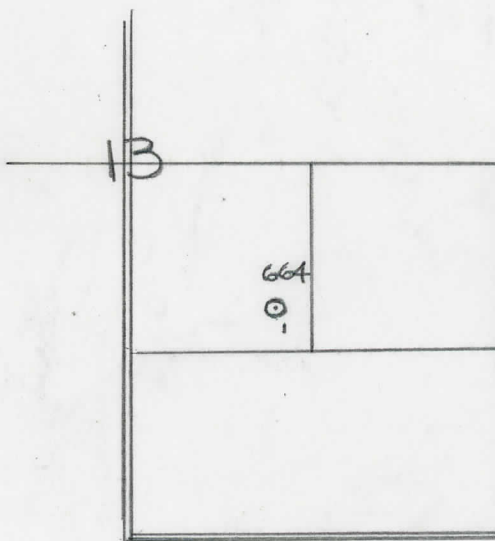
☼ Dry Showing Gas

⊗ Abandoned Location

☼ or ☼ Abandoned Gas Well

● or ● Abandoned Oil Well

● or ○ Input Well



Scale _____

Remarks: _____

Submitted by RW Civil Engineer

Approved by _____ Division Manager

Approved by _____ Vice-President - General Manager

Signed **D. C. Shackelford**