



Western Michigan University  
ScholarWorks at WMU

---

Legacy Scout Tickets from Pure Oil Company

---

8-20-2021

## MGRRE\_PureOilScoutTickets\_Muskegon Oil Corp., Welsh Oil Co.\_1\_21121128820000

MGRRE

*Western Michigan University*

Follow this and additional works at: <https://scholarworks.wmich.edu/pure>



Part of the Geology Commons

---

### WMU ScholarWorks Citation

MGRRE, "MGRRE\_PureOilScoutTickets\_Muskegon Oil Corp., Welsh Oil Co.\_1\_21121128820000" (2021).  
*Legacy Scout Tickets from Pure Oil Company*. 7517.  
<https://scholarworks.wmich.edu/pure/7517>

This Document is brought to you for free and open access via ScholarWorks at WMU. It has been accepted for inclusion in Legacy Scout Tickets from Pure Oil Company by an authorized administrator of ScholarWorks at WMU. See the National Digital Catalogue - Science Base Catalogue for more collections submitted by MGRRE.



---

**MGRRE\_PureOilScoutTickets\_Muskegon Oil Corp., Welsh Oil  
Co.\_1\_21121128820000**

API 21121128820000

Permit Number 12882

Lease Name Muskegon Oil Corp., Welsh Oil Co.

Well Number 1

County Muskegon

Township 11N

Range 16W

Section 3

2021 DEQ or Pure co\_name Muskegon Oil Corporation and Welsh Oil Company

Pure Number 676

Latitude 43.37009

Longitude -86.20327

# THE PURE OIL COMPANY LOCATION REPORT

Date December 31, 1946

A.F.E. No. Muskegon Oil Corp. & Welsh Oil Co.  
Muskegon Oil Corp. & Welsh Oil Co.

Division Mich. Producing District \_\_\_\_\_

Lease \_\_\_\_\_

Acres \_\_\_\_\_ Lease No. \_\_\_\_\_ Elevation \_\_\_\_\_ Well No. 1 (Serial No. 676)

Quadrangle NE SW SE Sec. 3 Twp. 11 N Rge. 16 W ~~BRK~~ ~~BRK~~ Twp. Dalton  
Dalton

Survey \_\_\_\_\_ County Muskegon State Michigan

Operator Muskegon Oil Corp. & Welsh Oil Co. Map Dalton Township, Muskegon County

Feet from North Line of Lease

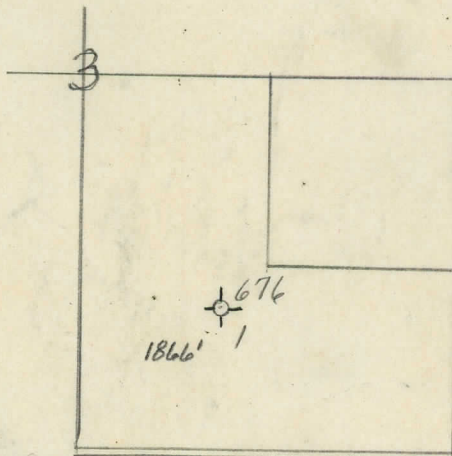
|            |            |   |   |       |   |   |   |
|------------|------------|---|---|-------|---|---|---|
| <u>330</u> | <u>330</u> | " | " | East  | " | " | " |
| <u>990</u> | <u>990</u> | " | " | South | " | " | " |
| _____      | _____      | " | " | West  | " | " | " |

Feet from North Line of Section

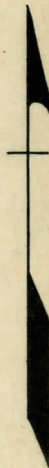
|            |            |   |   |       |   |            |   |
|------------|------------|---|---|-------|---|------------|---|
| <u>990</u> | <u>990</u> | " | " | East  | " | "          | " |
| <u>990</u> | <u>990</u> | " | " | South | " | <u>1/4</u> | " |
| _____      | _____      | " | " | West  | " | "          | " |

**LEGEND**

- Location
- ☀ Gas Well
- Oil Well
- ☀ Gas - Distillate Well
- ∅ or ○ Dry Hole
- Dry Showing Oil
- ☀ Dry Showing Gas
- ⊗ Abandoned Location
- ☀ or ☀ Abandoned Gas Well
- or ● Abandoned Oil Well
- or ○ Input Well



N



Scale \_\_\_\_\_

Remarks: \_\_\_\_\_

Submitted by CB Civil Engineer

Approved by \_\_\_\_\_ Division Manager

Approved by \_\_\_\_\_ Vice-President - General Manager