



Western Michigan University
ScholarWorks at WMU

Legacy Scout Tickets from Pure Oil Company

8-20-2021

MGRRE_PureOilScoutTickets_Corey, Dennis Estate_1_21123126600000

MGRRE

Western Michigan University

Follow this and additional works at: <https://scholarworks.wmich.edu/pure>



Part of the Geology Commons

WMU ScholarWorks Citation

MGRRE, "MGRRE_PureOilScoutTickets_Corey, Dennis Estate_1_21123126600000" (2021). *Legacy Scout Tickets from Pure Oil Company*. 7714.

<https://scholarworks.wmich.edu/pure/7714>

This Document is brought to you for free and open access via ScholarWorks at WMU. It has been accepted for inclusion in Legacy Scout Tickets from Pure Oil Company by an authorized administrator of ScholarWorks at WMU. See the National Digital Catalogue - Science Base Catalogue for more collections submitted by MGRRE.



MGRRE_PureOilScoutTickets_Corey, Dennis Estate_1_21123126600000

API 21123126600000

Permit Number 12660

Lease Name Corey, Dennis Estate

Well Number 1

County Newaygo

Township 16N

Range 11W

Section 16

2021 DEQ or Pure co_name Michigan Devonian Petroleum Company

Pure Number 243

Latitude 43.78109

Longitude -85.62905

THE PURE OIL COMPANY

WELL REPORT—OUTSIDE OPERATIONS

Wildcat

SERIAL NO. 243

STATE Michigan DEWIX CO. Newaygo

OPERATOR Michigan Devonian Petroleum Co.

FARM Dennis Corey Estate WELL NO. 1

TWP. Barton S. 16 T. 16N R. 11W

LOC. NE SW NE

MAP NO. CO-ORD. ELEV. 1182.4

STATUS Old Well To Be Drilled Deeper.

NORTH

DATE 10-1-47 SCOUT H.J.G.

WEIGHT BELOW - ORIZIDE OBSERVATIONS

THE PURE OIL COMPANY LOCATION REPORT

Date October 2, 1946

A.F.E. No. _____

Division Mich. Producing District _____

Dennis Corey Estate
Dennis Corey Estate

Acres _____ Lease No. _____

Elevation _____

Well No. 1 (Serial No. 243)

Quadrangle NE SW NE

Sec. 16

Twp. 16 N

Rge. 11 W

Twp. Barton

Survey _____ County Newaygo

State Michigan

Operator Mich. Devonian Petroleum Co.

Map Barton Township, Newaygo County

330 330 Feet from North Line of Lease

" " East " " "

" " South " " "

990 990 " " West " " "

Feet from North Line of Section

" " East " " "

" " South " 1/4 "

990 990 " " West " " "

LEGEND

○ Location

☀ Gas Well

● Oil Well

☀ Gas - Distillate Well

∅ or ○ Dry Hole

● Dry Showing Oil

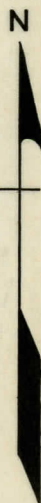
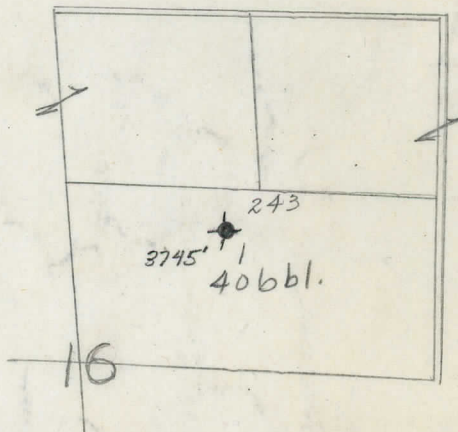
☀ Dry Showing Gas

⊗ Abandoned Location

☀ or ⊗ Abandoned Gas Well

● or ● Abandoned Oil Well

⊗ or ⊙ Input Well



Remarks: _____ Scale _____

Submitted by CB
Civil Engineer

Approved by _____
Division Manager

Approved by _____
Vice-President - General Manager