



Western Michigan University  
ScholarWorks at WMU

---

Legacy Scout Tickets from Pure Oil Company

---

8-20-2021

**MGRRE\_PureOilScoutTickets\_Consumers Power  
Co\_1\_21123127040000**

MGRRE  
*Western Michigan University*

Follow this and additional works at: <https://scholarworks.wmich.edu/pure>



Part of the Geology Commons

---

#### **WMU ScholarWorks Citation**

MGRRE, "MGRRE\_PureOilScoutTickets\_Consumers Power Co\_1\_21123127040000" (2021). *Legacy Scout Tickets from Pure Oil Company*. 7715.

<https://scholarworks.wmich.edu/pure/7715>

This Document is brought to you for free and open access via ScholarWorks at WMU. It has been accepted for inclusion in Legacy Scout Tickets from Pure Oil Company by an authorized administrator of ScholarWorks at WMU. See the National Digital Catalogue - Science Base Catalogue for more collections submitted by MGRRE.



---

**MGRRE\_PureOilScoutTickets\_Consumers Power Co\_1\_21123127040000**

API 21123127040000

Permit Number 12704

Lease Name Consumers Power Co

Well Number 1

County Newaygo

Township 11N

Range 14W

Section 15

2021 DEQ or Pure co\_name Hoffman, Charles D.

Pure Number 244

Latitude 43.33833

Longitude -85.97192

October 23, 1946

Date October 23, 1946

THE PURE OIL COMPANY  
LOCATION REPORT

A.F.E. No. Consumers Power Co.

Division Mich. Producing District \_\_\_\_\_ Lease Consumers Power Co.

Acres \_\_\_\_\_ Lease No. \_\_\_\_\_ Elevation \_\_\_\_\_ Well No. 1 (Serial No. 244)

Quadrangle C-6 1/2 - SE-SW Sec. 15 Twp. 11N Rge. 14W Blk. Dist. Bridgeton  
C S 1/2 SE SW Sec. 15 Twp. 11N Rge. 14W Blk. Dist. Bridgeton

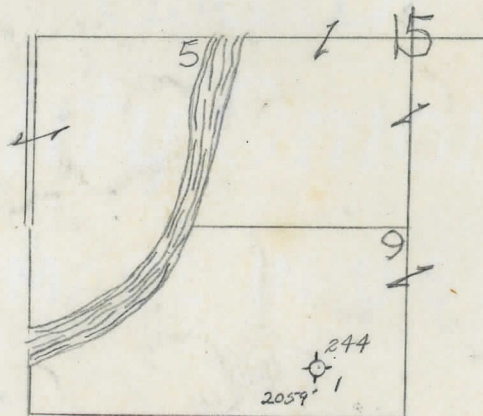
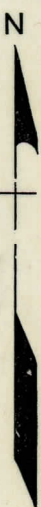
Survey \_\_\_\_\_ County Newaygo State Michigan

Operator Charles D. Hoffman Map Bridgeton Township, Newaygo County  
Charles D. Hoffman Map Bridgeton Township, Newaygo County

Feet from North Line of Lease					
330	330	"	"	East	" " "
1980	1980	"	"	South	" " "
		"	"	West	" " "
Feet from North Line of Section					
660	660	"	"	East	" " "
330	330	"	"	South	" " "
		"	"	West	" " "

LEGEND

- Location
- ☀ Gas Well
- Oil Well
- ☀ Gas - Distillate Well
- ∅ or ○ Dry Hole
- Dry Showing Oil
- ☀ Dry Showing Gas
- ⊗ Abandoned Location
- ☀ or ☀ Abandoned Gas Well
- or ● Abandoned Oil Well
- or ○ Input Well



Remarks: \_\_\_\_\_

\_\_\_\_\_

\_\_\_\_\_

Scale \_\_\_\_\_

Submitted by CB Civil Engineer Approved by \_\_\_\_\_ Division Manager

Approved by \_\_\_\_\_ Vice-President - General Manager