



Western Michigan University
ScholarWorks at WMU

Legacy Scout Tickets from Pure Oil Company

8-20-2021

MGRRE_PureOilScoutTickets_Beardsley_1_21125007679000

MGRRE

Western Michigan University

Follow this and additional works at: <https://scholarworks.wmich.edu/pure>



Part of the Geology Commons

WMU ScholarWorks Citation

MGRRE, "MGRRE_PureOilScoutTickets_Beardsley_1_21125007679000" (2021). *Legacy Scout Tickets from Pure Oil Company*. 7725.

<https://scholarworks.wmich.edu/pure/7725>

This Document is brought to you for free and open access via ScholarWorks at WMU. It has been accepted for inclusion in Legacy Scout Tickets from Pure Oil Company by an authorized administrator of ScholarWorks at WMU. See the National Digital Catalogue - Science Base Catalogue for more collections submitted by MGRRE.



MGRRE_PureOilScoutTickets_Beardsley_1_21125007679000

API 21125007679000

Permit Number None

Lease Name Beardsley

Well Number 1

County Oakland

Township 04N

Range 09E

Section 26

2021 DEQ or Pure co_name Independence Oil and Gas Company

Pure Number 16

Latitude 42.7268372

Longitude -83.3594589

Jan-28-1935

THE PURE OIL COMPANY

DATE January 28, 1935

LOCATION REPORT

No. 16

STATE Michigan COUNTY Oakland

DIST. Independence SEC. 26 TOWN 4N RANGE 9E

WELL No. 1 (SERIAL No. 16) FARM

PREC. Beardsley ACRES

NAME OF STREAM OR WATERS QUADRANGLE W₂¹-NE-NE W₂¹-NE-NE

OPERATOR Laymon Map Independence Township, Oakland County

Feet from North Line of Farm

" " East " " "
 " " South " " "
 " " West " " "

Feet from North Line of Section

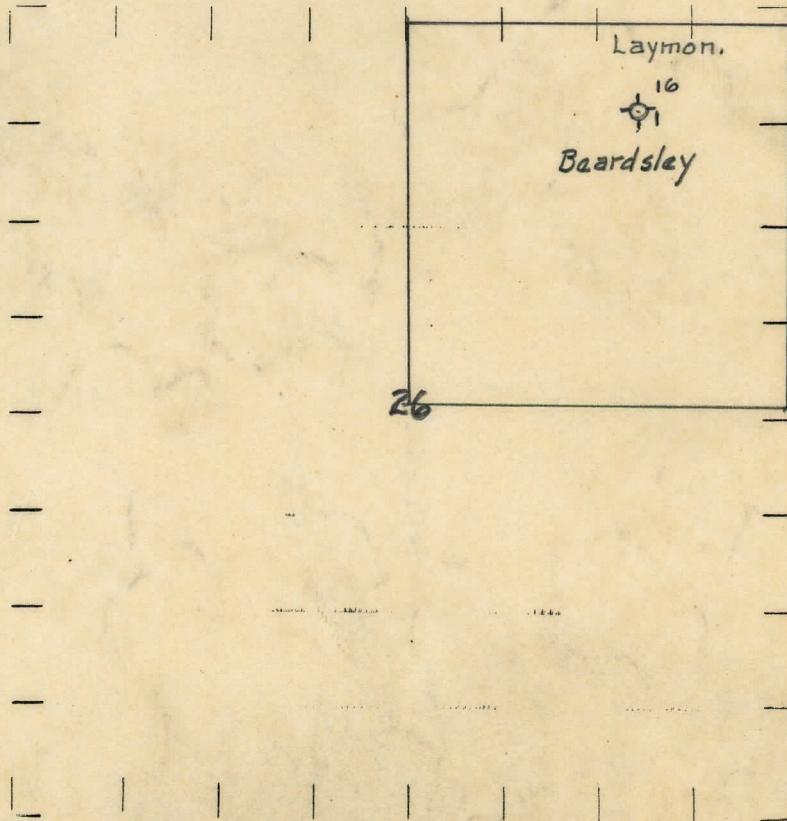
600 600
1065 1065
 " " East " " "
 " " South " " "
 " " West " " "

Map Independence Township, Oakland County
Indep- Oakland

LEGEND

- LOCATION
- ⊕ RIG
- ⊕ DRILLING
- ☀ GAS WELL
- OIL WELL
- ⊕ SMALL OIL WELL
- ⊕ DRY HOLE
- ⊕ DRY SHOWING OIL
- ⊕ DRY SHOWING GAS
- ⊕ ABANDONED LOCATION
- ☀ ABANDONED GAS WELL
- ⊕ ABANDONED OIL WELL

NOTE: Below make tracing from map, (when no map is obtainable make sketch) showing farm, center of section, this location with measurements and also wells, dry holes, or other locations in the vicinity of this location.



REMARKS: Completed Well - Drift 260' Water 970-1017' Water & Oil Show 1413-1415'
 Sunbury 922¹/₂-950' Antrim 1204 Total Depth 1423'
 Berea 950' Traverse 1342 T.D. 1923

SIGNED

Superintendent or Foreman.