



Western Michigan University
ScholarWorks at WMU

Legacy Scout Tickets from Pure Oil Company

8-20-2021

MGRRE_PureOilScoutTickets_Everett_1_unk

MGRRE

Western Michigan University

Follow this and additional works at: <https://scholarworks.wmich.edu/pure>



Part of the Geology Commons

WMU ScholarWorks Citation

MGRRE, "MGRRE_PureOilScoutTickets_Everett_1_unk" (2021). *Legacy Scout Tickets from Pure Oil Company*. 7737.

<https://scholarworks.wmich.edu/pure/7737>

This Document is brought to you for free and open access via ScholarWorks at WMU. It has been accepted for inclusion in Legacy Scout Tickets from Pure Oil Company by an authorized administrator of ScholarWorks at WMU. See the National Digital Catalogue - Science Base Catalogue for more collections submitted by MGRRE.



MGRRE_PureOilScoutTickets_Everett_1_unk

API unk

Permit Number unk

Lease Name Everett

Well Number 1

County Ogemaw

Township 22N

Range 04E

Section 10

2021 DEQ or Pure co_name Sun Oil Co

Pure Number 20

Latitude 44.3128438

Longitude -83.9332743

THE PURE OIL COMPANY

LOCATION REPORT

No. 20

DATE Sept 26th 1929

STATE Mich COUNTY Ogemaw DIST. Logan SEC. 10 TOWN 22 N RANGE 4 E
TWP. Logan PREC. Everett

WELL No. 1 (SERIAL No. 20) FARM _____ ACRES _____

NAME OF STREAM OR WATERS _____ QUADRANGLE _____

OPERATOR Sun Oil Co. MAP _____
TEST HOLE

_____ Feet from North Line of Farm

_____ " " East " " "

_____ " " South " " "

_____ " " West " " "

_____ Feet from North Line of Section

_____ " " East " " "

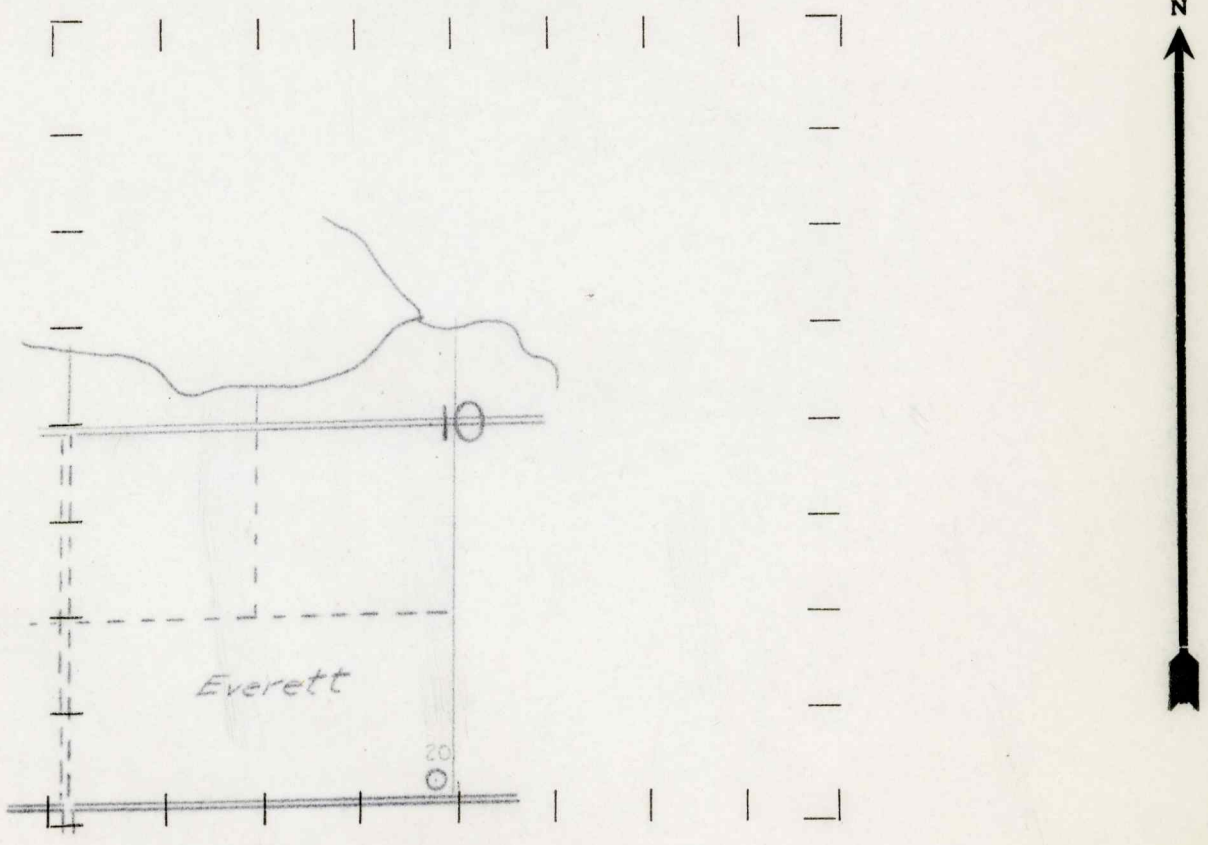
100 " " South " " "

2540 " " West " " "

LEGEND

- LOCATION
- ⊕ RIG
- ⊕ DRILLING
- ⊗ GAS WELL
- OIL WELL
- ⬮ SMALL OIL WELL
- ⊕ DRY HOLE
- ⬮ DRY SHOWING OIL
- ⊗ DRY SHOWING GAS
- ⊕ ABANDONED LOCATION
- ⊗ ABANDONED GAS WELL
- ⬮ ABANDONED OIL WELL

NOTE: Below make tracing from map, (when no map is obtainable make sketch) showing farm, center of section, this location with measurements and also wells, dry holes, or other locations in the vicinity of this location. Make copy to keep for reference and send original to Columbus office.



REMARKS: Drift 110 - Mich Series 110-366
Total depth 366

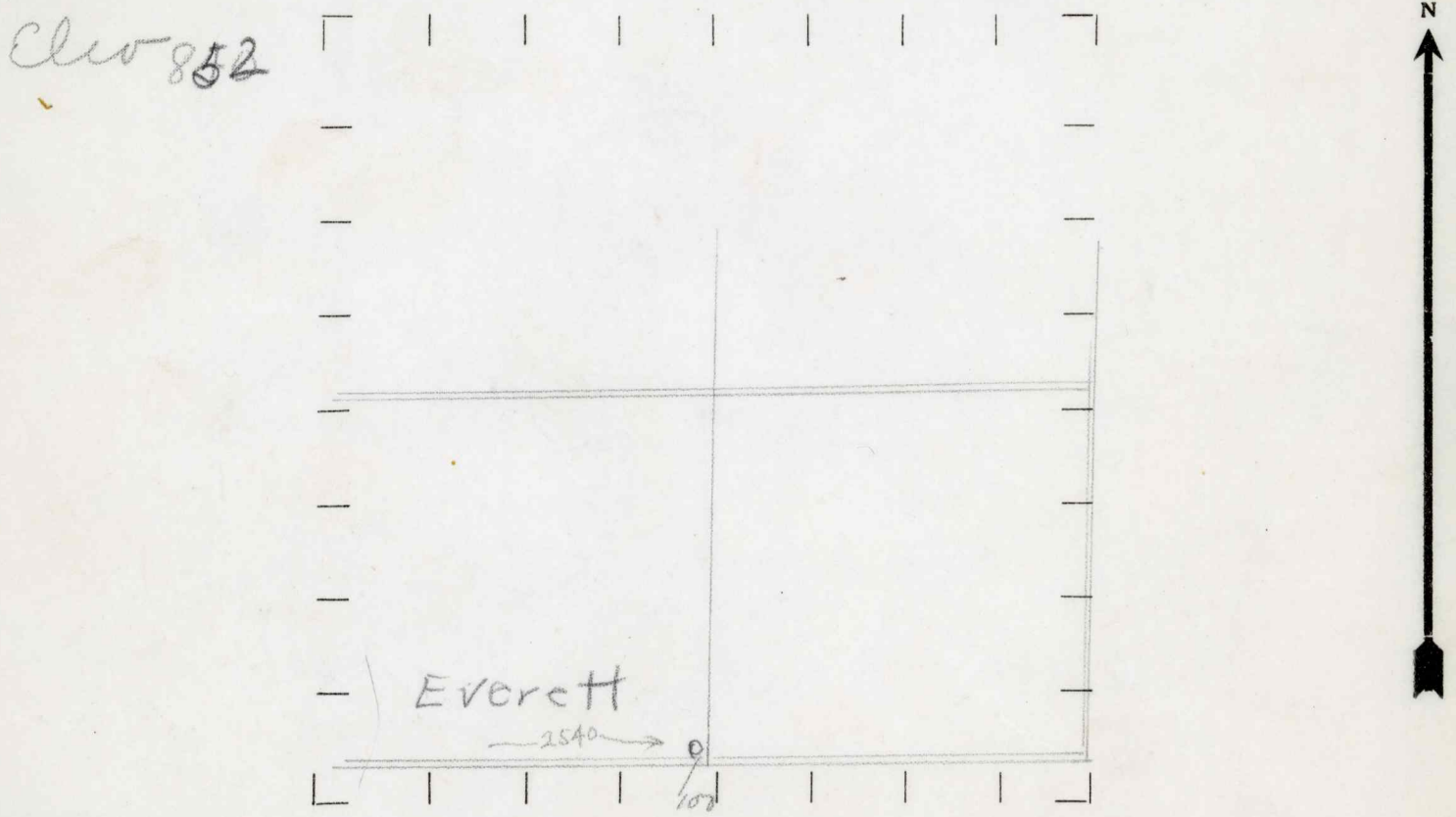
SIGNED _____

Superintendent or Foreman.

Feet from North Line of Farm
 " " East " " "
 " " South " " "
 " " West " " "
 Feet from North Line of Section
 " " East " " "
 100 " " South " " "
 2540 " " West " " "

- LEGEND**
- LOCATION
 - ⊕ RIG
 - ⊕ DRILLING
 - ⊕ GAS WELL
 - OIL WELL
 - ⬮ SMALL OIL WELL
 - ⊕ DRY HOLE
 - ⬮ DRY SHOWING OIL
 - ⊕ DRY SHOWING GAS
 - ⊕ ABANDONED LOCATION
 - ⊕ ABANDONED GAS WELL
 - ⬮ ABANDONED OIL WELL

NOTE: Below make tracing from map, (when no map is obtainable make sketch) showing farm, center of section, this location with measurements and also wells, dry holes, or other locations in the vicinity of this location. Make copy to keep for reference and send original to Columbus office.



REMARKS: Drift 110, mich series 110-366
 Total depth 366

SIGNED _____
 Superintendent or Foreman.