



Western Michigan University
ScholarWorks at WMU

Legacy Scout Tickets from Pure Oil Company

8-20-2021

MGRRE_PureOilScoutTickets_Bohlinger,
John_1_21129014720000

MGRRE
Western Michigan University

Follow this and additional works at: <https://scholarworks.wmich.edu/pure>



Part of the Geology Commons

WMU ScholarWorks Citation

MGRRE, "MGRRE_PureOilScoutTickets_Bohlinger, John_1_21129014720000" (2021). *Legacy Scout Tickets from Pure Oil Company*. 7738.
<https://scholarworks.wmich.edu/pure/7738>

This Document is brought to you for free and open access via ScholarWorks at WMU. It has been accepted for inclusion in Legacy Scout Tickets from Pure Oil Company by an authorized administrator of ScholarWorks at WMU. See the National Digital Catalogue - Science Base Catalogue for more collections submitted by MGRRE.



MGRRE_PureOilScoutTickets_Bohlinger, John_1_21129014720000

API 21129014720000

Permit Number 1472

Lease Name Bohlinger, John

Well Number 1

County Ogemaw

Township 22N

Range 02E

Section 26

2021 DEQ or Pure co_name Weber, Alvin H.

Pure Number 37

Latitude 44.27086

Longitude -84.15462

THE PURE OIL COMPANY

LOCATION REPORT

No. 37

DATE 3-11-33STATE Michigan COUNTY Ogemaw DIST. West Branch SEC. 26 TOWN 22N RANGE 2EWELL No. 1 (SERIAL No. 37) FARM John Bohlinger 80 ACRESNAME OF STREAM OR WATERS _____ QUADRANGLE W1-W11OPERATOR Alvin W. W. W. MAP _____

_____ Feet from North Line of Farm

_____ " " East " " "

330 " " South " " "330 " " West " " "2310 _____ Feet from North Line of Section2310 " " East " " "

_____ " " South " " "

_____ " " West " " "

LEGEND

O LOCATION

① RIG

⊕ DRILLING

⊗ GAS WELL

● OIL WELL

⊙ SMALL OIL WELL

⊕ DRY HOLE

⊕ DRY SHOWING OIL

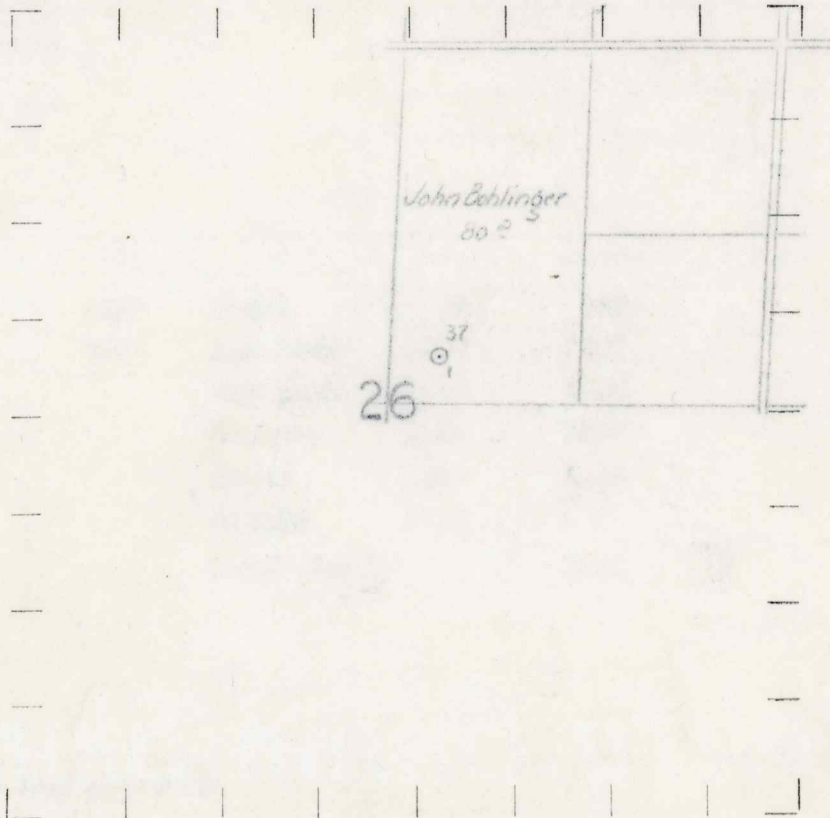
⊕ DRY SHOWING GAS

⊕ ABANDONED LOCATION

⊕ ABANDONED GAS WELL

⊕ ABANDONED OIL WELL

NOTE: Below make tracing from map, (when no map is obtainable make sketch) showing farm, center of section, this location with measurements and also wells, dry holes, or other locations in the vicinity of this location. Make copy to keep for reference and send original to Columbus office.



REMARKS:

SIGNED

Superintendent or Foreman.

ГОСЦИОН КЕРОКЛ
THE PURE OIL COMPANY

No. 21

Michigan Producing DIVISION

COMPLETION RECORD

No. 37

DIST. W. Branch SEC. 26
TWP. _____
PREC. _____

TOWN 22N RANGE 2E

John Bohlinger

ACRES 80

NAME OF STREAM OR WATERS.

QUADRANGLE

OPERATOR Alvin Weber

MAP W. Branch Twp., Ogemaw Co.

LOCATION REPORT SENT IN (DATE) _____ 3-11-33

WELL STARTED (DATE) 3-15-33

WELL COMPLETED (DATE) 6-13-33

OIL WELL

GAS WELD

DRY HOLE

ABANDONED WELL

El. 874

CROSS OUT THREE OF THE ABOVE
WELL RECORD

DATE OF SHOT.

NUMBER OF QUARTS.

1st 24 HOURS PRODUCTION.

Dry Hole

BARRELS OR FEET

2nd " " "

“ “ “

3rd " " "

“ “ “

4th " " "

“ “ “

5th " " "

“ “ “

SAND AND CASING

[illegible]

| | |
|---------|------------------------|
| REMARKS | Complete log attached. |
|---------|------------------------|

NOTE:—MAKE COPY TO KEEP FOR REFERENCE AND SEND ORIGINAL TO CHICAGO OFFICE. LIST MATERIAL CHARGEABLE TO WELL ON OTHER SIDE.

SIGNED.

G. H. Bell

SUPT. OR FOREMAN

LIST OF MATERIAL CHARGEABLE TO WELL NO. 1
MATERIAL
SIZE
DIACTION
THE BOBE OIL COMPANY

Alvin Weber
John Bohlinger #1
West Branch Twp., Ogemaw Co.
Serial #37

| | |
|-----------|--------------|
| 0- 165 | Sand & Drift |
| 165- 193 | Gray Sand |
| 193- 280 | Blue Slate |
| 280- 285 | Shell |
| 285- 525 | Slate |
| 525- 690 | Broken Sand |
| 690-1200 | White Slate |
| 1200-1201 | Red Rock |
| 1201-1210 | White Slate |
| 1210-1220 | Red Rock |
| 1220-1260 | Gray Sand |
| 1260-1280 | White Slate |
| 1280-1307 | Black Slate |
| 1307-1330 | Berea Sand |
| 1330-1415 | White Slate |
| 1415-1460 | Brown Shale |
| 1460 | Total Depth |

Casing Record:

| | |
|--------|------|
| 10" | 193' |
| 8 1/4" | 280' |