



Western Michigan University  
ScholarWorks at WMU

---

Legacy Scout Tickets from Pure Oil Company

---

8-20-2021

**MGRRE\_PureOilScoutTickets\_Carroll, Ora\_1\_21129017390100**

MGRRE

*Western Michigan University*

Follow this and additional works at: <https://scholarworks.wmich.edu/pure>



Part of the Geology Commons

---

#### WMU ScholarWorks Citation

MGRRE, "MGRRE\_PureOilScoutTickets\_Carroll, Ora\_1\_21129017390100" (2021). *Legacy Scout Tickets from Pure Oil Company*. 7756.

<https://scholarworks.wmich.edu/pure/7756>

This Document is brought to you for free and open access via ScholarWorks at WMU. It has been accepted for inclusion in Legacy Scout Tickets from Pure Oil Company by an authorized administrator of ScholarWorks at WMU. See the National Digital Catalogue - Science Base Catalogue for more collections submitted by MGRRE.



---

**MGRRE\_PureOilScoutTickets\_Carroll, Ora\_1\_21129017390100**

API 21129017390100

Permit Number 1739

Lease Name Carroll, Ora

Well Number 1

County Ogemaw

Township 22N

Range 02E

Section 29

2021 DEQ or Pure co\_name Marathon Oil Company

Pure Number 59

Latitude 44.27493

Longitude -84.22179

THE PURE OIL COMPANY  
WELL REPORT - OUTSIDE OPERATIONS

SERIAL NO. 59

IL COMPANY

STATE Michigan ~~ESK~~ Ogemaw  
CO.  
OPERATOR Henry Sappington  
FARM Ora Carrol WELL NO. 1  
TWP. West Branch S. 29 T. 22N R. 2E  
~~SURVEY~~  
LOC. NE NW NW

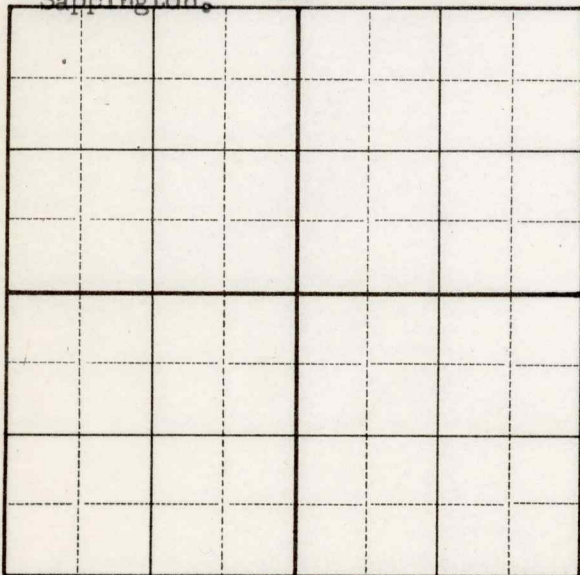
WILDCAT ☐ FIELD ☐ FIELD NAME \_\_\_\_\_

MAP NO. \_\_\_\_\_ CO-ORD. \_\_\_\_\_ ELEV. \_\_\_\_\_

STATUS \_\_\_\_\_

Operators name changed from L. A.  
Menges, E.M. Melvin Swanson & Henry  
Sappington.

NORTH



DATE 5-27-52 SCOUT DRS



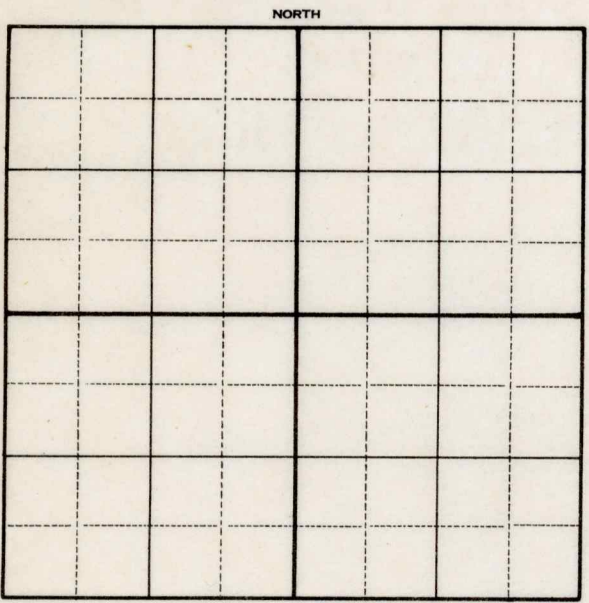
STATE Michigan CO Ogemaw  
OPERATOR C. W. Collin  
FARM Ora Carroll WELL NO. 1  
TWP. West Branch S. 29 T. 22N R. 2E  
LOC. NE NW NW

WILDCAT ☐ FIELD ☐ FIELD NAME \_\_\_\_\_

MAP NO. \_\_\_\_\_ CO-ORD. \_\_\_\_\_ ELEV. \_\_\_\_\_

STATUS \_\_\_\_\_

Name of operator changed from:  
McClanahan Oil Company



DATE 1-24-49 SCOUT H. J. G.

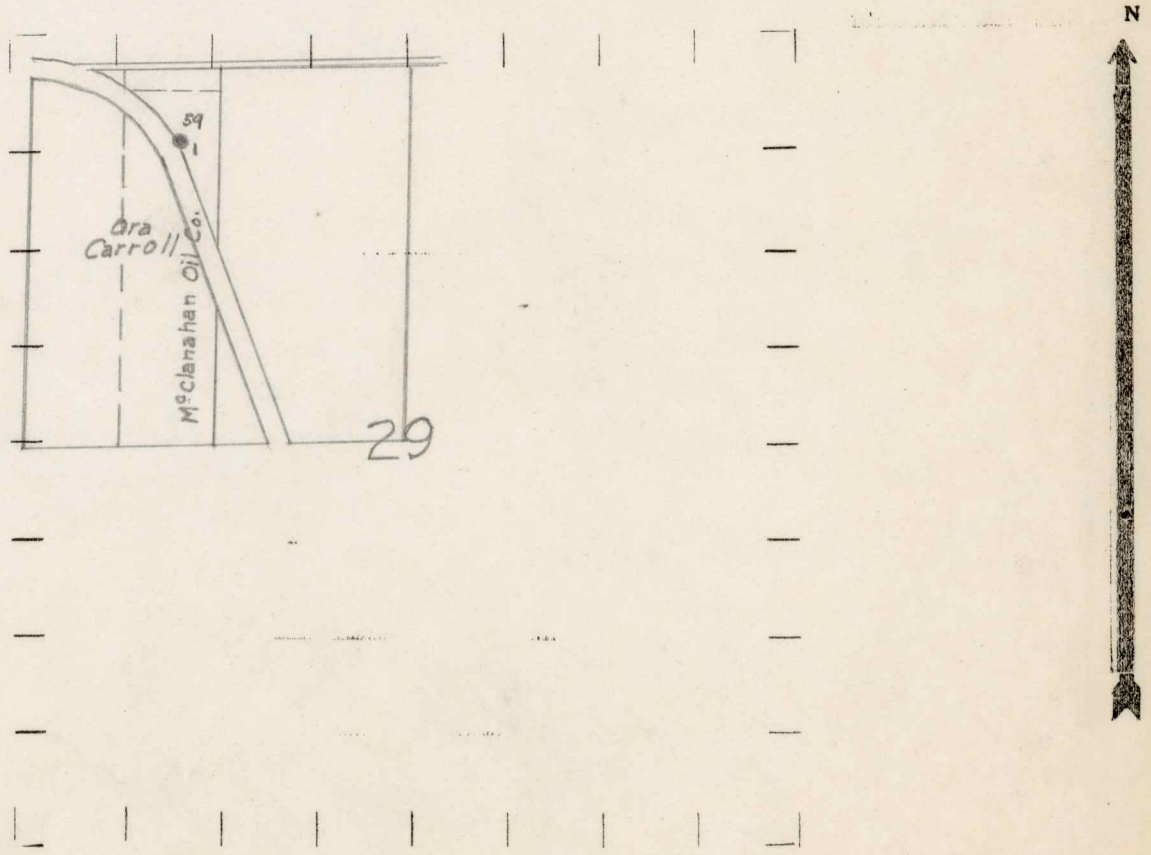


OBSERVATION  
DATE 12/6/34  
STATE Michigan COUNTY Ogemaw  
WELL No. 1 (SERIAL No. 59) FARM Ora Carroll  
NAME OF STREAM OR WATERS  
OPERATOR McClanahan Oil Company  
Map West Branch Township, Ogemaw County  
No. 59  
CORRECTED  
LOCATION REPORT  
DIST. West Branch  
TWP. West Branch  
SEC. 29  
TOWN 22N  
RANGE 1W  
ACRES  
QUADRANGLE NE-NW-NW  
NE-NW-NW

380 300 Feet from North Line of Farm  
285 285 " " East " " "  
" " South " " "  
" " West " " "  
570 570 Feet from North Line of Section  
" " East " " "  
" " South " " "  
1035 1035 " " West " " "

- LEGEND
- LOCATION
  - ① RIG
  - ⊕ DRILLING
  - ☀ GAS WELL
  - OIL WELL
  - ⦿ SMALL OIL WELL
  - ⊙ DRY HOLE
  - ⦿ DRY SHOWING OIL
  - ☀ DRY SHOWING GAS
  - ⊙ ABANDONED LOCATION
  - ☀ ABANDONED GAS WELL
  - ⦿ ABANDONED OIL WELL

NOTE: Below make tracing from map, (when no map is obtainable make sketch) showing farm, center of section, this location with measurements and also wells, dry holes, or other locations in the vicinity of this location.



REMARKS:

SIGNED R.L. Yeager  
Superintendent or Foreman.

DATE December 29, 1933

LOCATION REPORT

No. 59

STATE Michigan COUNTY Ogemaw DIST. West Branch SEC. 29 TOWN 22 N RANGE 2 E  
WELL No. 1 (SERIAL No. 59) FARM \_\_\_\_\_ ACRES \_\_\_\_\_

NAME OF STREAM OR WATERS \_\_\_\_\_ QUADRANGLE NE-NW-NW

OPERATOR McGlashan Oil Company MAP West Branch Township, Ogemaw County

330 Feet from North Line of Farm

330 " " East " " "

" " South " " "

" " West " " "

330 Feet from North Line of Section

" " East " " "

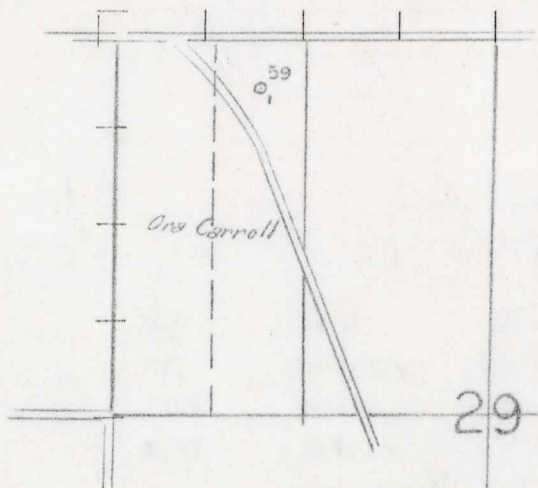
" " South " " "

990 " " West " " "

LEGEND

- |                  |                      |
|------------------|----------------------|
| ○ LOCATION       | ⊕ DRY HOLE           |
| ① RIG            | ◆ DRY SHOWING OIL    |
| ⊕ DRILLING       | ⊗ DRY SHOWING GAS    |
| ⊗ GAS WELL       | ⊖ ABANDONED LOCATION |
| ● OIL WELL       | ⊗ ABANDONED GAS WELL |
| ⊕ SMALL OIL WELL | ⊖ ABANDONED OIL WELL |

NOTE: Below make tracing from map, (when no map is obtainable make sketch) showing farm, center of section, this location with measurements and also wells, dry holes, or other locations in the vicinity of this location. Make copy to keep for reference and send original to Columbus office.



REMARKS:

Per. No 1739

SIGNED

R. L. Yeager  
Superintendent or Foreman.



