



Western Michigan University
ScholarWorks at WMU

Legacy Scout Tickets from Pure Oil Company

8-20-2021

MGRRE_PureOilScoutTickets_Wier, John_1_na

MGRRE

Western Michigan University

Follow this and additional works at: <https://scholarworks.wmich.edu/pure>



Part of the Geology Commons

WMU ScholarWorks Citation

MGRRE, "MGRRE_PureOilScoutTickets_Wier, John_1_na" (2021). *Legacy Scout Tickets from Pure Oil Company*. 7759.

<https://scholarworks.wmich.edu/pure/7759>

This Document is brought to you for free and open access via ScholarWorks at WMU. It has been accepted for inclusion in Legacy Scout Tickets from Pure Oil Company by an authorized administrator of ScholarWorks at WMU. See the National Digital Catalogue - Science Base Catalogue for more collections submitted by MGRRE.



MGRRE_PureOilScoutTickets_Wier, John_1_na

API na

Permit Number na

Lease Name Wier, John

Well Number 1

County Ogemaw

Township 22N

Range 02E

Section 19

2021 DEQ or Pure co_name Sovereign, W. J.

Pure Number 62

Latitude 44.2837748

Longitude -84.2360396

THE PURE OIL COMPANY

DATE January 4, 1934

LOCATION REPORT

No. 62

STATE Michigan COUNTY Ogemaw DIST. West Branch TWP. West Branch SEC. 19 TOWN 22 N RANGE 2 E

WELL No. 1 (SERIAL No. 62) FARM John Weir ACRES _____

NAME OF STREAM OR WATERS _____ QUADRANGLE C.W.L.-NE-SW
Block D Lot 10 - City of W.Branch

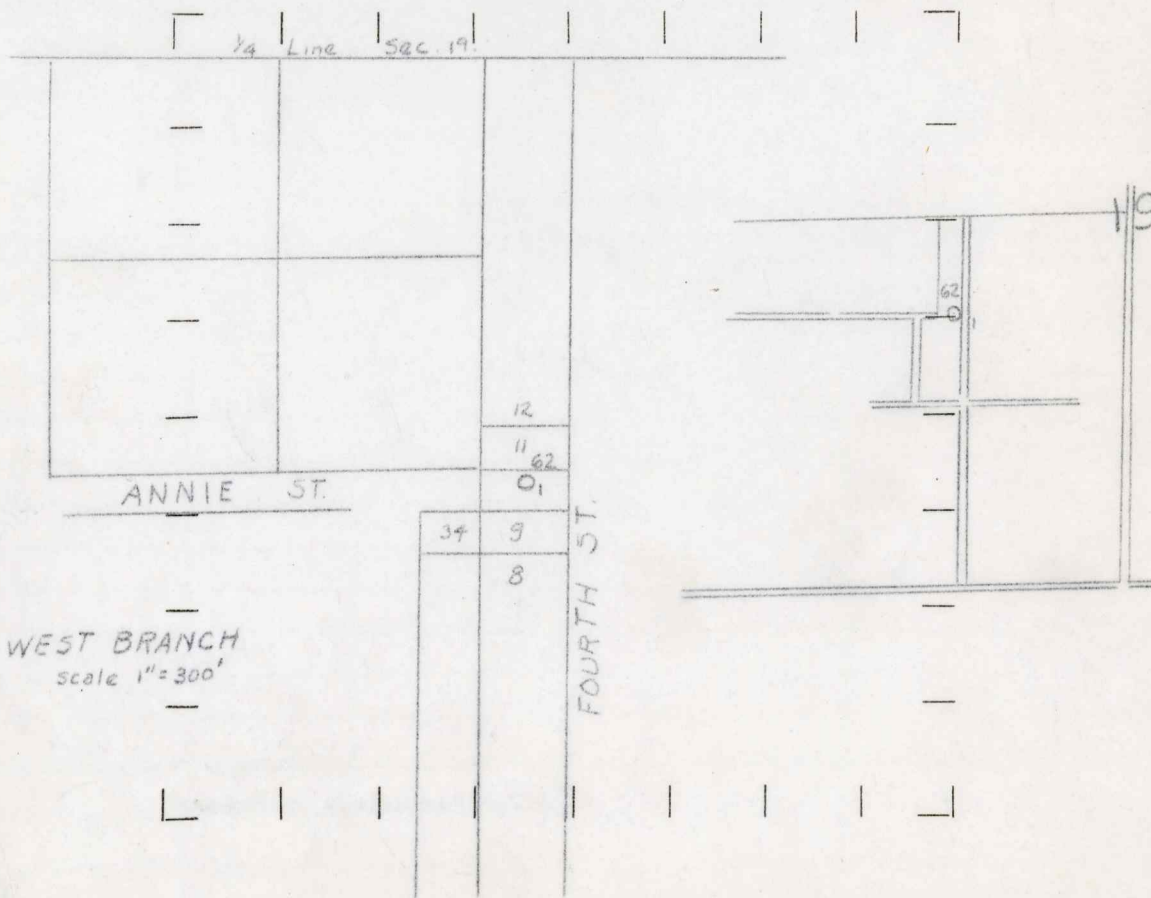
OPERATOR W. J. Sovereign MAP West Branch Township, Ogemaw County

660 Feet from North Line of Farm
 " " East " " "
225 " " South " " "
660 Feet from North Line of $\frac{1}{2}$ Section
1200 " " East " $\frac{1}{4}$ "
 " " South " " "
 " " West " " "

LEGEND

- LOCATION
- ⊕ RIG
- ⊕ DRILLING
- ⊕ GAS WELL
- OIL WELL
- ⊕ SMALL OIL WELL
- ⊕ DRY HOLE
- ⊕ DRY SHOWING OIL
- ⊕ DRY SHOWING GAS
- ⊕ ABANDONED LOCATION
- ⊕ ABANDONED GAS WELL
- ⊕ ABANDONED OIL WELL

NOTE: Below make tracing from map, (when no map is obtainable make sketch) showing farm, center of section, this location with measurements and also wells, dry holes, or other locations in the vicinity of this location. Make copy to keep for reference and send original to Columbus office.



REMARKS: _____

SIGNED

R. L. Yeager
 Superintendent or Foreman.

Permit No 1758

THE PURE OIL COMPANY

Michigan Producing DIVISION

DATE April 26, 1934

COMPLETION RECORD

No. 62

STATE Michigan COUNTY Ogemaw DIST. TWP. West Branch SEC. 19 TOWN 22 N RANGE 2 E

WELL No. 1 (SERIAL No. 62) FARM John Weir ACRES

NAME OF STREAM OR WATERS QUADRANGLE NE-SW

OPERATOR W. J. Sovereign MAP West Branch Township, Ogemaw County

LOCATION REPORT SENT IN (DATE) 1/4/34

WELL STARTED (DATE) Not started WELL COMPLETED (DATE)

OIL WELL

GAS WELL

DRY HOLE

ABANDONED WELL

CROSS OUT THREE OF THE ABOVE WELL RECORD

DATE OF SHOT NUMBER OF QUARTS

| 1st 24 HOURS PRODUCTION | LOCATION ABANDONED | BARKELS OR FEET |
|-------------------------|--------------------|-----------------|
| 2nd " " " | | " " " |
| 3rd " " " | | " " " |
| 4th " " " | | " " " |
| 5th " " " | | " " " |

SAND AND CASING

| CASING SIZE | WEIGHT | CASING Feet Inches | SAND Name and Nature | TOP | BOTTOM | TOP PAY | BOTTOM PAY | SALT WATER |
|-------------|--------|--------------------|----------------------|-----|--------|---------|------------|------------|
| | | | | | | | | |
| | | | | | | | | |
| | | | | | | | | |
| | | | | | | | | |
| | | | | | | | | |
| | | | | | | | | |
| | | | | | | | | |
| | | | | | | | | |
| | | | | | | | | |
| | | | | | | | | |
| | | | | | | | | |
| | | | | | | | | |
| | | | | | | | | |
| | | | | | | | | |
| | | | | | | | | |
| | | | | | | | | |
| | | | | | | | | |
| | | | | | | | | |
| | | | | | | | | |
| | | | | | | | | |
| | | | | | | | | |
| | | | | | | | | |
| | | | | | | | | |

REMARKS Location abandoned 4/24/34

NOTE:—MAKE COPY TO KEEP FOR REFERENCE AND SEND ORIGINAL TO CHICAGO OFFICE. LIST MATERIAL CHARCEABLE TO WELL ON OTHER SIDE.

SIGNED G. H. Zell SUPT. OR FOREMAN