



Western Michigan University  
ScholarWorks at WMU

---

Legacy Scout Tickets from Pure Oil Company

---

8-20-2021

## MGRRE\_PureOilScoutTickets\_County Fair Grounds\_1\_21129020120000

MGRRE  
*Western Michigan University*

Follow this and additional works at: <https://scholarworks.wmich.edu/pure>



Part of the Geology Commons

---

### WMU ScholarWorks Citation

MGRRE, "MGRRE\_PureOilScoutTickets\_County Fair Grounds\_1\_21129020120000" (2021). *Legacy Scout Tickets from Pure Oil Company*. 7768.  
<https://scholarworks.wmich.edu/pure/7768>

This Document is brought to you for free and open access via ScholarWorks at WMU. It has been accepted for inclusion in Legacy Scout Tickets from Pure Oil Company by an authorized administrator of ScholarWorks at WMU. See the National Digital Catalogue - Science Base Catalogue for more collections submitted by MGRRE.



---

**MGRRE\_PureOilScoutTickets\_County Fair Grounds\_1\_21129020120000**

API 21129020120000

Permit Number 2012

Lease Name County Fair Grounds

Well Number 1

County Ogemaw

Township 22N

Range 02E

Section 19

2021 DEQ or Pure co\_name Sappington, Carol J.

Pure Number 73

Latitude 44.2827973

Longitude -84.2344473

DATE April 2, 1941

LOCATION REPORT

No. 73

DATE May 17, 1934

LOCATION REPORT

No. 73

STATE Michigan COUNTY Ogemaw DIST. West Branch SEC. 19 TOWN 22 N RANGE 2 E  
WELL No. 1 (SERIAL No. 73) FARM County Fair Grounds ACRES

NAME OF STREAM OR WATERS \_\_\_\_\_ QUADRANGLE NW NW SE

OPERATOR Bachelder and Gallaher Map West Branch Township, Ogemaw County

\_\_\_\_\_ Feet from North Line of Farm

\_\_\_\_\_ " " East " " "

\_\_\_\_\_ " " South " " "

\_\_\_\_\_ " " West " " "

\_\_\_\_\_ Feet from North Line of Section

\_\_\_\_\_ " " East " " "

\_\_\_\_\_ " " South " " "

\_\_\_\_\_ " " West " " "

LEGEND

○ LOCATION

① RIG

⊕ DRILLING

☀ GAS WELL

● OIL WELL

◆ SMALL OIL WELL

⊖ DRY HOLE

◆ DRY SHOWING OIL

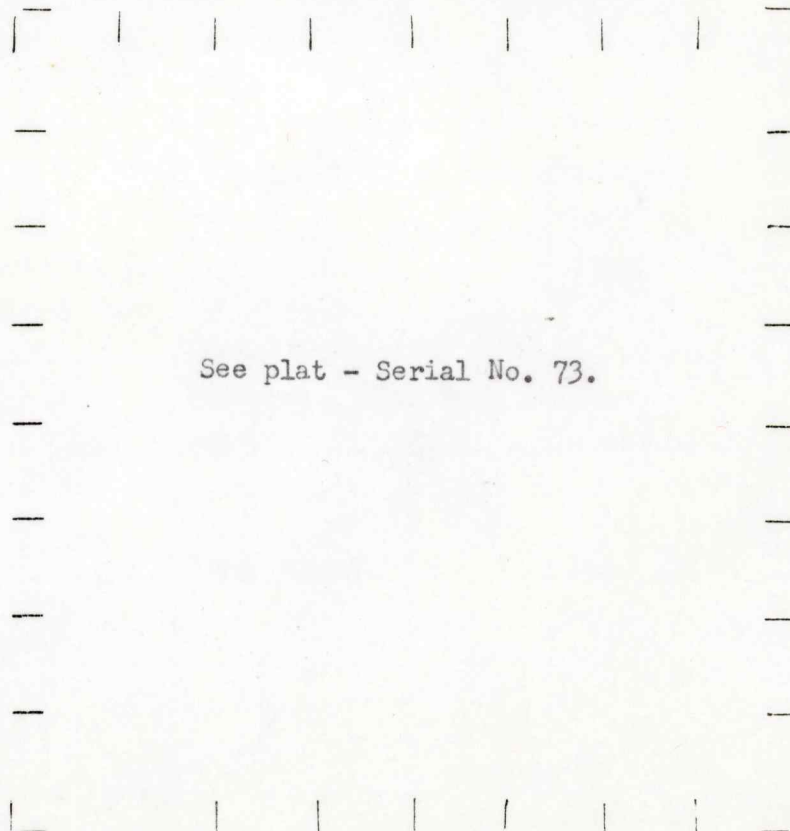
⊖ DRY SHOWING GAS

⊖ ABANDONED LOCATION

☀ ABANDONED GAS WELL

◆ ABANDONED OIL WELL

NOTE: Below make tracing from map. (when no map is obtainable make sketch) showing farm, center of section, this location with measurements and also wells, dry holes, or other locations in the vicinity of this location.



N



REMARKS: Change of operator.

SIGNED

Superintendent or Foreman.

OBSERVER Bachelder and Callahan

MAP

West Branch Township, Ogemaw County

NAME OF STREAM OR WATERS

QUADRANGLE NW NW SE

WELL No. 1 (SERIAL No. 73) FARM PREC. County Fair Grounds

ACRES

NAME OF STREAM OR WATERS

QUADRANGLE NW-NW-SE

OPERATOR T. F. Caldwell

MAP West Branch Township, Ogemaw County

330 Feet from North Line of Farm

" " East " " "

" " South " " "

330 " " West " " "

Feet from North Line of Section

2310 " " East " " "

2310 " " South " " "

" " West " " "

**LEGEND**

○ LOCATION

◆ DRY HOLE

① RIG

◆ DRY SHOWING OIL

⊕ DRILLING

⊕ DRY SHOWING GAS

⊗ GAS WELL

⊗ ABANDONED LOCATION

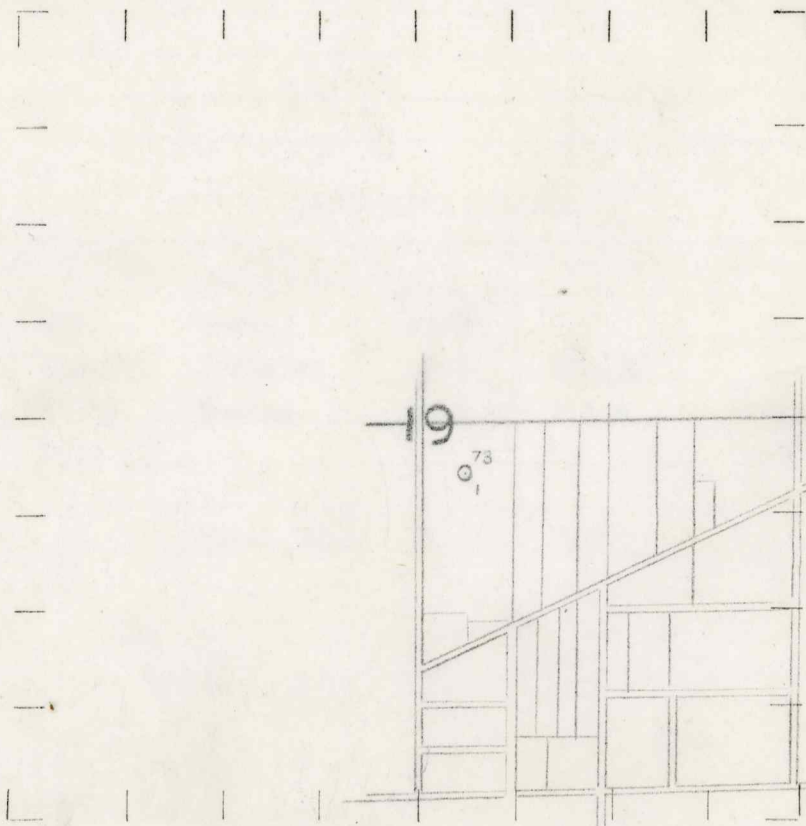
● OIL WELL

⊗ ABANDONED GAS WELL

◆ SMALL OIL WELL

⊗ ABANDONED OIL WELL

NOTE: Below make tracing from map, (when no map is obtainable make sketch) showing farm, center of section, this location with measurements and also wells, dry holes, or other locations in the vicinity of this location. Make copy to keep for reference and send original to Columbus office.



N



REMARKS:

SIGNED

Superintendent or Foreman.



DATE 8/17/34

# COMPLETION RECORD

No. 73

STATE Michigan COUNTY Ogemaw

DIST.

DIST. \_\_\_\_\_  
TWP. West Branch SEC. 19 TOWN 22N RANGE 2E

PREC.

WELL No. 1 (SERIAL No. 73) FARM County Fair Grounds

ACRES

NAME OF STREAM OR WATERS

QUADRANGLE W $\frac{1}{2}$ -NW $\frac{1}{4}$ -SE $\frac{1}{4}$

OPERATOR T. F. Caldwell

MAP West Branch Township, Ogemaw County

LOCATION REPORT SENT IN (DATE) 5/17/34

WELL STARTED (DATE) 5/28/34

WELL COMPLETED (DATE) 8/1/34

## OIL WELL

**GASTWELDEN**

## DRYHOLE

## ABANDONED WELL

CROSS OUT THREE OF THE ABOVE

## WELL RECORD

Elevation 965.5'

DATE OF SHOT 8/3/34

NUMBER OF <sup>Gallons</sup> QUARTS 1000

1st 24 HOURS PRODUCTION 245 bbls., Gross

BARRELS OR FEET

2nd " " "

3rd " " "

4th " " "

5th " " "

## SAND AND CASING

[illegible]

REMARKS \_\_\_\_\_ NOTE: 8/15/34, pumping 100 bbls. per day.

NOTE.—MAKE COPY TO KEEP FOR REFERENCE AND SEND ORIGINAL TO CHICAGO OFFICE. LIST MATERIAL CHARGEABLE TO WELL ON OTHER SIDE.

**SIGNED**

SUPT. OR FOREMAN