



Legacy Scout Tickets from Pure Oil Company

8-20-2021

MGRRE_PureOilScoutTickets_Reinhardt, August, "B"_1_21129020840000

MGRRE

Western Michigan University

Follow this and additional works at: <https://scholarworks.wmich.edu/pure>



Part of the Geology Commons

WMU ScholarWorks Citation

MGRRE, "MGRRE_PureOilScoutTickets_Reinhardt, August, "B"_1_21129020840000" (2021). *Legacy Scout Tickets from Pure Oil Company*. 7770.

<https://scholarworks.wmich.edu/pure/7770>

This Document is brought to you for free and open access via ScholarWorks at WMU. It has been accepted for inclusion in Legacy Scout Tickets from Pure Oil Company by an authorized administrator of ScholarWorks at WMU. See the National Digital Catalogue - Science Base Catalogue for more collections submitted by MGRRE.



MGRRE_PureOilScoutTickets_Reinhardt, August, "B"_1_21129020840000

API 21129020840000

Permit Number 2084

Lease Name Reinhardt, August, "B"

Well Number 1

County Ogemaw

Township 22N

Range 02E

Section 27

2021 DEQ or Pure co_name Marathon Oil Company

Pure Number 75

Latitude 44.26331

Longitude -84.16999

THE PURE OIL COMPANY
LOCATION REPORT

No. 75

DATE 7-12-34

STATE Michigan COUNTY Ogemaw DIST. TWP. West Branch SEC. 27 TOWN 22-N RANGE 2-E

WELL No. 1 (SERIAL No. 75) FARM August Reinhardt "B" ACRES

NAME OF STREAM OR WATERS QUADRANGLE SW-SE-SE

OPERATOR Weber Oil Co. MAP West Branch Twp. Ogemaw Co.

Feet from North Line of Farm

East " " "

330 South " " "

330 West " " "

Feet from North Line of Section

East " " "

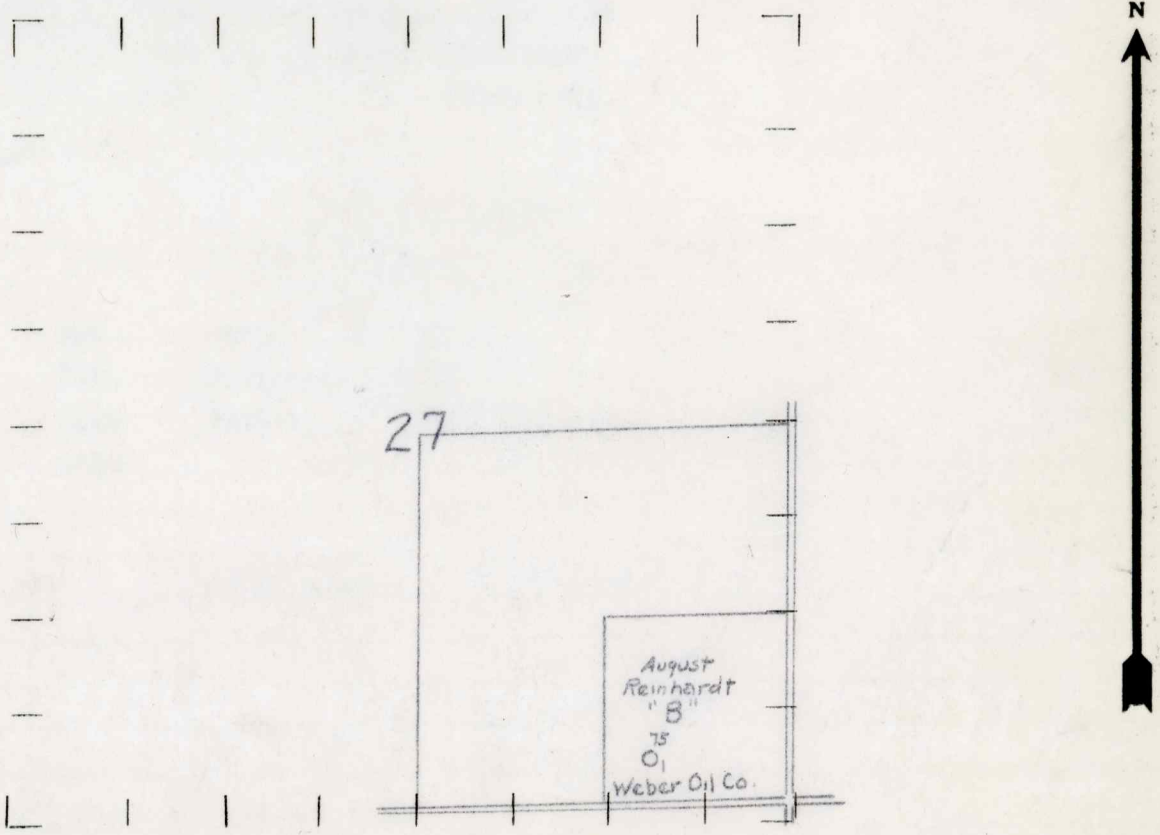
990 South " " "

330 West " " "

LEGEND

- LOCATION
- ① RIG
- ⊕ DRILLING
- ⊙ GAS WELL
- OIL WELL
- ⬮ SMALL OIL WELL
- ⊖ DRY HOLE
- ⬮ DRY SHOWING OIL
- ⊙ DRY SHOWING GAS
- ⊖ ABANDONED LOCATION
- ⊙ ABANDONED GAS WELL
- ⬮ ABANDONED OIL WELL

NOTE: Below make tracing from map, (when no map is obtainable make sketch) showing farm, center of section, this location with measurements and also wells, dry holes, or other locations in the vicinity of this location. Make copy to keep for reference and send original to Columbus office.



REMARKS:

SIGNED *R. L. Yeager*
Superintendent or Foreman.
Per. # 2084.

LOCATION BELOW
THE PURE OIL COMPANY

No. 12

Michigan Producing DIVISION

DATE 9/6/34 COMPLETION RECORD No. 75

STATE Michigan COUNTY Ogemaw DIST. West Branch SEC. 27 TOWN 22N RANGE 2E
PREC.

WELL No. 1 (SERIAL No. 75) FARM August Reinhardt "B" ACRES

NAME OF STREAM OR WATERS QUADRANGLE SW-SE-SE

OPERATOR Weber Oil Company MAP West Branch Township, Ogemaw County

LOCATION REPORT SENT IN (DATE) 7/12/34

WELL STARTED (DATE) 7/7/34 WELL COMPLETED (DATE) 8/17/34

OIL WELL
 GAS WELL
 DRY HOLE
 ABANDONED WELL

CROSS OUT THREE OF THE ABOVE

Elevation 904.8'

WELL RECORD

DATE OF SHOT 8/24/34 ^{Acid} NUMBER OF QUARTS 1000 ^{Gallons}

1st 24 HOURS PRODUCTION	Est.	BARRELS OR FEET
1st " " "	<u>15 bbls., natural</u>	" " "
2nd " " "	<u>340 bbls., Gross., after acid</u>	" " "
3rd " " "	<u>192 " Net, after acid</u>	" " "
4th " " "	<u>150 " " after acid</u>	" " "
5th " " "		" " "

SAND AND CASING

CASING SIZE	WEIGHT	CASING Feet Inches	SAND Name and Nature	TOP	BOTTOM	TOP PAY	BOTTOM PAY	SALT WATER
10"		207	Berea	1201				220
8 1/4"		503	Traverse	1726				1730
6-5/8		1806	Dundee	2518	S.L.M.	2528		1734 1/2
5-3/16"		2519				2630	Gas	
						2635	2644	
						2650	2655	
			Total Depth		2693			

REMARKS Show Oil 1729' - Show Gas 1731'

NOTE:—MAKE COPY TO KEEP FOR REFERENCE AND SEND ORIGINAL TO CHICAGO OFFICE. LIST MATERIAL CHARGEABLE TO WELL ON OTHER SIDE.

SIGNED B. N. Bell SUPT. OR FOREMAN