



Western Michigan University
ScholarWorks at WMU

Legacy Scout Tickets from Pure Oil Company

8-20-2021

MGRRE_PureOilScoutTickets_Conard_1_21129021710000

MGRRE

Western Michigan University

Follow this and additional works at: <https://scholarworks.wmich.edu/pure>



Part of the Geology Commons

WMU ScholarWorks Citation

MGRRE, "MGRRE_PureOilScoutTickets_Conard_1_21129021710000" (2021). *Legacy Scout Tickets from Pure Oil Company*. 7776.

<https://scholarworks.wmich.edu/pure/7776>

This Document is brought to you for free and open access via ScholarWorks at WMU. It has been accepted for inclusion in Legacy Scout Tickets from Pure Oil Company by an authorized administrator of ScholarWorks at WMU. See the National Digital Catalogue - Science Base Catalogue for more collections submitted by MGRRE.



MGRRE_PureOilScoutTickets_Conard_1_21129021710000

API 21129021710000

Permit Number 2171

Lease Name Conard

Well Number 1

County Ogemaw

Township 21N

Range 03E

Section 22

2021 DEQ or Pure co_name McClanahan Oil Company

Pure Number 81

Latitude 44.2043

Longitude -84.05392

THE PURE OIL COMPANY

LOCATION REPORT

No. 81

Form 243 9-14-34
DATE 9/13/34

STATE Michigan COUNTY Ogemaw DIST. Mills SEC. 22 TOWN 21N RANGE 3E

WELL No. 1 (SERIAL No. 81) FARM C. Conrad ACRES

NAME OF STREAM OR WATERS QUADRANGLE NW-NW-NE
NW-NW-NE

OPERATOR McClanahan Oil Company MAP Mills Township, Ogemaw County
McClanahan Oil Co Mills Twp - Ogemaw Co.

Feet from North Line of Farm

East " " "

South " " "

330 330 West " " "

330 330 Feet from North Line of Section

East " " "

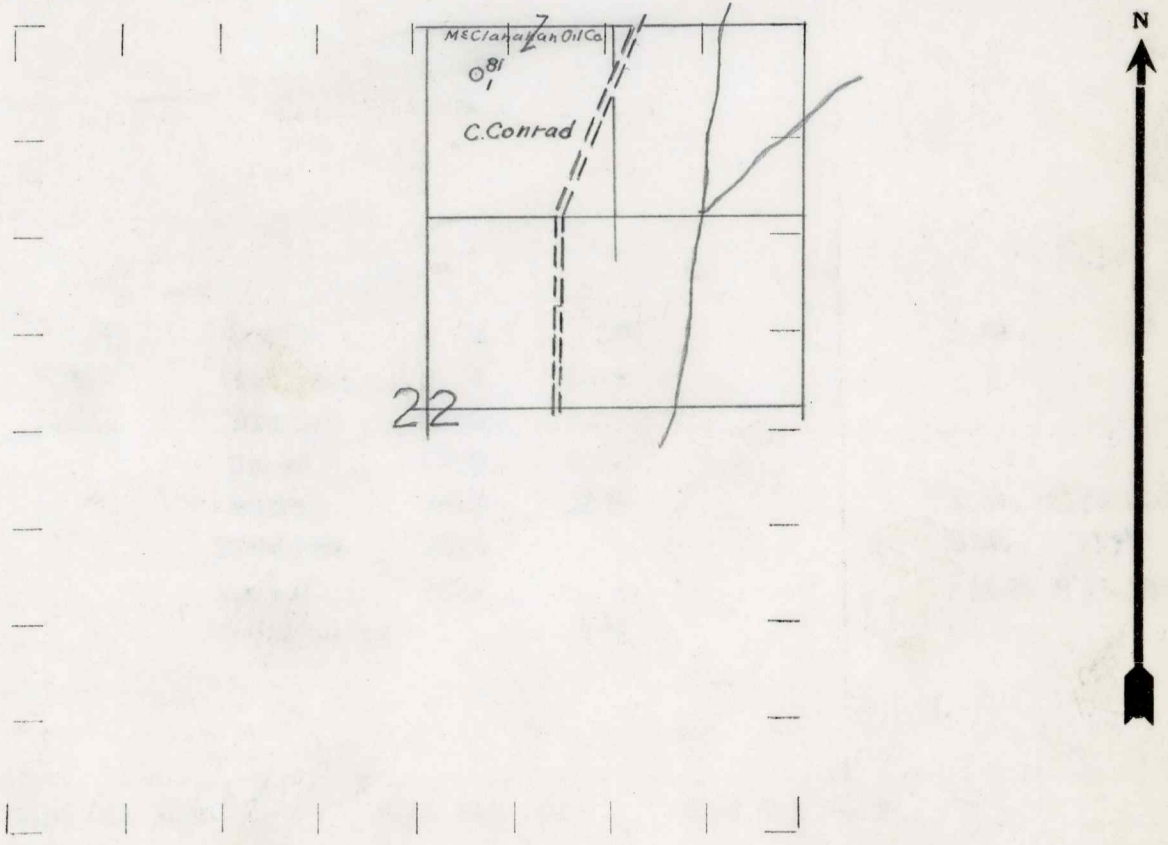
South " " "

330 330 West " " 1/4

LEGEND

- LOCATION
- ⊙ RIG
- ⊕ DRILLING
- ⊛ GAS WELL
- OIL WELL
- ⦿ SMALL OIL WELL
- ⊠ DRY HOLE
- ⊡ DRY SHOWING OIL
- ⊞ DRY SHOWING GAS
- ⦶ ABANDONED LOCATION
- ⦶ ABANDONED GAS WELL
- ⦶ ABANDONED OIL WELL

NOTE: Below make tracing from map, (when no map is obtainable make sketch) showing farm, center of section, this location with measurements and also wells, dry holes, or other locations in the vicinity of this location. Make copy to keep for reference and send original to Columbus office.



REMARKS:

SIGNED

R. L. Yeager

Superintendent or Foreman.

Per # 2171

Michigan Producing DIVISION COMPLETION RECORD

No. 81

DATE 11/15/34

STATE Michigan COUNTY Ogemaw DIST. TWP. Mills SEC. 22 TOWN 21N RANGE 3E
PREC.

WELL No. 1 (SERIAL No. 81) FARM C. Conrad ACRES

NAME OF STREAM OR WATERS QUADRANGLE NW-NW-NE

OPERATOR McClanahan Oil Company MAP Mills Township, Ogemaw County

LOCATION REPORT SENT IN (DATE) 9/13/34

WELL STARTED (DATE) 9/12/34 WELL COMPLETED (DATE) 11/12/34

DRY HOLE

Elevation 806.3'

CROSS OUT THREE OF THE ABOVE
WELL RECORD

DATE OF SHOT	NUMBER OF QUARTS
1st 24 HOURS PRODUCTION	Dry Hole
2nd " " "	BARRELS OR FEET
3rd " " "	" " "
4th " " "	" " "
5th " " "	" " "

SAND AND CASING

CASING SIZE	WEIGHT	CASING Feet Inches	SAND Name and Nature	TOP	BOTTOM	TOP PAY	BOTTOM PAY	SALT WATER
10"		182	Drift	0	145		3 Ba.	532
8 1/4		518	Red Rock	1135	1145			
6-5/8		2285	Sunbury	1246	1275			
			Berea	1275	1311			
			Antrim	1415	1835		3 Ba.	2170-2180
			Traverse	1835			Show	1957
			Dundee	2594			Black	2732-2745
			Total Depth		2745			

REMARKS Show Oil 1840-1849' Show Gas 1957' Show Oil 2613'

NOTE:—MAKE COPY TO KEEP FOR REFERENCE AND SEND ORIGINAL TO CHICAGO OFFICE. LIST MATERIAL CHARGEABLE TO WELL ON OTHER SIDE.

SIGNED *J.H. Ball* SUPT. OR FOREMAN