



Western Michigan University  
ScholarWorks at WMU

---

Legacy Scout Tickets from Pure Oil Company

---

8-20-2021

**MGRRE\_PureOilScoutTickets\_Doran, L.\_1\_21129021720000**

MGRRE

*Western Michigan University*

Follow this and additional works at: <https://scholarworks.wmich.edu/pure>



Part of the Geology Commons

---

#### **WMU ScholarWorks Citation**

MGRRE, "MGRRE\_PureOilScoutTickets\_Doran, L.\_1\_21129021720000" (2021). *Legacy Scout Tickets from Pure Oil Company*. 7777.

<https://scholarworks.wmich.edu/pure/7777>

This Document is brought to you for free and open access via ScholarWorks at WMU. It has been accepted for inclusion in Legacy Scout Tickets from Pure Oil Company by an authorized administrator of ScholarWorks at WMU. See the National Digital Catalogue - Science Base Catalogue for more collections submitted by MGRRE.



---

**MGRRE\_PureOilScoutTickets\_Doran, L.\_1\_21129021720000**

API 21129021720000

Permit Number 2172

Lease Name Doran, L.

Well Number 1

County Ogemaw

Township 22N

Range 02E

Section 27

2021 DEQ or Pure co\_name Marathon Oil Company

Pure Number 82

Latitude 44.26329

Longitude -84.17185

DATE 9-13-34 9/13/34

LOCATION REPORT

No. 82

STATE Michigan COUNTY Ogemaw DIST. West Branch TWP. West Branch SEC. 27 TOWN 22N RANGE 2E

WELL No. 1 (SERIAL No. 82) FARM L. Doran ACRES

NAME OF STREAM OR WATERS QUADRANGLE SE-SW-SE SR-SW-SE

OPERATOR Weber Oil Company MAP West Branch Township, Ogemaw County Weber Oil Co. West Branch Twp. - Ogemaw Co.

Feet from North Line of Farm 330 330 East

330 330 South West

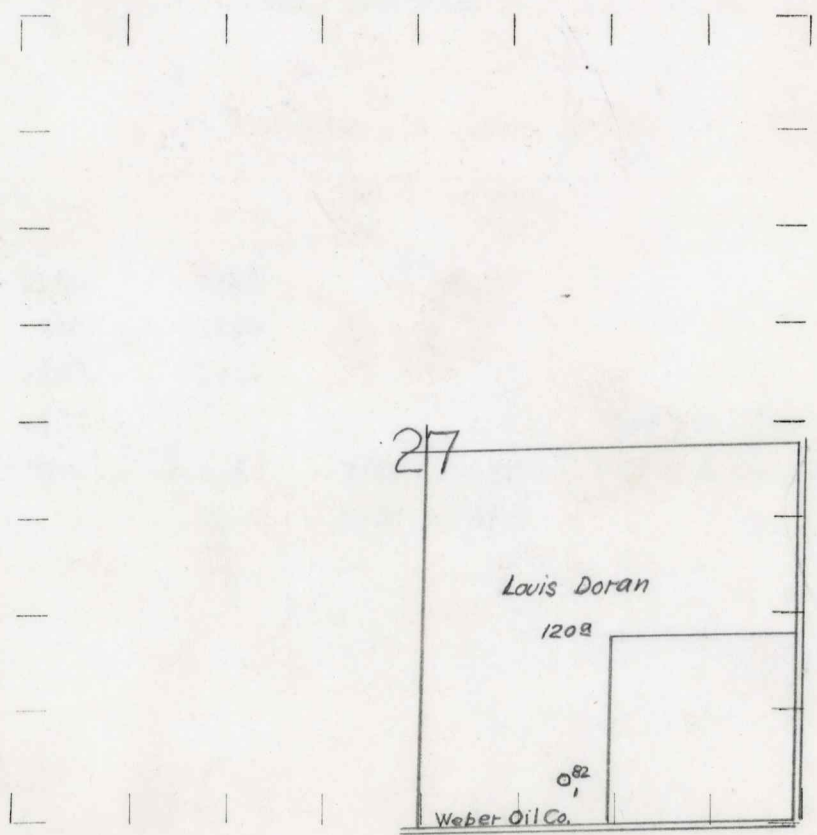
Feet from North Line of Section East

330 330 South 1/4 990 990 West 1/4

LEGEND

- O LOCATION
DRY HOLE
RIG
DRY SHOWING OIL
DRILLING
DRY SHOWING GAS
GAS WELL
ABANDONED LOCATION
OIL WELL
ABANDONED GAS WELL
SMALL OIL WELL
ABANDONED OIL WELL

NOTE: Below make tracing from map, (when no map is obtainable make sketch) showing farm, center of section, this location with measurements and also wells, dry holes, or other locations in the vicinity of this location. Make copy to keep for reference and send original to Columbus office.



REMARKS:

SIGNED R.H. Sigel Superintendent or Foreman.

Michigan Producing Division

Date January 17, 1935 No. 82  
 State Michigan County Ogemaw Dist. W. Branch  
 (Serial No.) Twp. W. Branch Sec. 27 Twp. 22N Rge. 2E  
 Well No. 1 (County No.) 82 Farm L. Doran Acres \_\_\_\_\_  
 Operator Weber Oil Company by Information secured from Scouting Department  
 Date well started 9/26/34 Date well completed 12/31/34 Elevation 892.3'

PRODUCTION RECORD

1st 24 hours natural Est. 10 bbls.  
 2nd 24 hours natural \_\_\_\_\_  
 Date of shot \_\_\_\_\_ No. of quarts \_\_\_\_\_ From \_\_\_\_\_ to \_\_\_\_\_ From \_\_\_\_\_ to \_\_\_\_\_  
 Date of acid 1/6/35 No. of gallons 1000 gals.  
 shot \_\_\_\_\_  
 1st 24 hours after acid Est. 100 bbls.  
 shot \_\_\_\_\_  
 2nd 24 hours after acid \_\_\_\_\_

FORMATION AND CASING RECORD

| Formation   | Top  | Bottom | Top Pay | Bottom Pay | Remarks             | Casing |        |
|-------------|------|--------|---------|------------|---------------------|--------|--------|
|             |      |        |         |            |                     | Size   | Set at |
| Sunbury     | 1160 | 1186   |         |            |                     | 10"    | 206    |
| Berea       | 1186 | 1230   |         |            |                     | 8 1/4  | 342    |
| Antrim      | 1290 | 1701   |         |            |                     | 6-5/8  | 1810   |
| Traverse    | 1701 |        |         |            | Show Oil 1719'      | 5-3/16 | 2504   |
| Dundee      | 2504 | S.L.M. | 2520    | 2525       | H.F.S. Water. 1719' |        |        |
| Total Depth |      | 2674   | 2560    | 2570       |                     |        |        |
|             |      |        |         |            |                     |        |        |
|             |      |        |         |            |                     |        |        |
|             |      |        |         |            |                     |        |        |
|             |      |        |         |            |                     |        |        |
|             |      |        |         |            |                     |        |        |

Remarks \_\_\_\_\_  
 \_\_\_\_\_  
 \_\_\_\_\_  
 \_\_\_\_\_

Signed D.H. Bell