



Western Michigan University
ScholarWorks at WMU

Legacy Scout Tickets from Pure Oil Company

8-20-2021

MGRRE_PureOilScoutTickets_County Fair Grounds_2_21129022240000

MGRRE
Western Michigan University

Follow this and additional works at: <https://scholarworks.wmich.edu/pure>



Part of the Geology Commons

WMU ScholarWorks Citation

MGRRE, "MGRRE_PureOilScoutTickets_County Fair Grounds_2_21129022240000" (2021). *Legacy Scout Tickets from Pure Oil Company*. 7784.
<https://scholarworks.wmich.edu/pure/7784>

This Document is brought to you for free and open access via ScholarWorks at WMU. It has been accepted for inclusion in Legacy Scout Tickets from Pure Oil Company by an authorized administrator of ScholarWorks at WMU. See the National Digital Catalogue - Science Base Catalogue for more collections submitted by MGRRE.



MGRRE_PureOilScoutTickets_County Fair Grounds_2_21129022240000

API 21129022240000

Permit Number 2224

Lease Name County Fair Grounds

Well Number 2

County Ogemaw

Township 22N

Range 02E

Section 19

2021 DEQ or Pure co_name Sappington, Carol J.

Pure Number 89

Latitude 44.2809683

Longitude -84.2343545

THE PURE OIL COMPANY

LOCATION REPORT

No. 89

DATE April 2, 1941

STATE Michigan COUNTY Ogemaw DISTRICT West Branch SEC. 19 TOWN 22 N RANGE 2 E
 WELL No. 2 (SERIAL No. 89) FARM County Fair Grounds ACRES

NAME OF STREAM OR WATERS _____ QUADRANGLE SW NW SEOPERATOR Bachelder and Gallaher Map West Branch Township, Ogemaw County

____ Feet from North Line of Farm

____ " " East " " "

____ " " South " " "

____ " " West " " "

____ Feet from North Line of Section

____ " " East " " "

____ " " South " " "

____ " " West " " "

LEGEND

○ LOCATION

① RIG

⊕ DRILLING

☀ GAS WELL

● OIL WELL

◆ SMALL OIL WELL

⊙ DRY HOLE

⊙ DRY SHOWING OIL

⊙ DRY SHOWING GAS

⊙ ABANDONED LOCATION

⊙ ABANDONED GAS WELL

⊙ ABANDONED OIL WELL

NOTE: Below make tracing from map, (when no map is obtainable make sketch) showing farm, center of section, this location with measurements and also wells, dry holes, or other locations in the vicinity of this location.

See plat - Serial No. 89.

REMARKS: Change of operator.

SIGNED

Superintendent or Foreman.

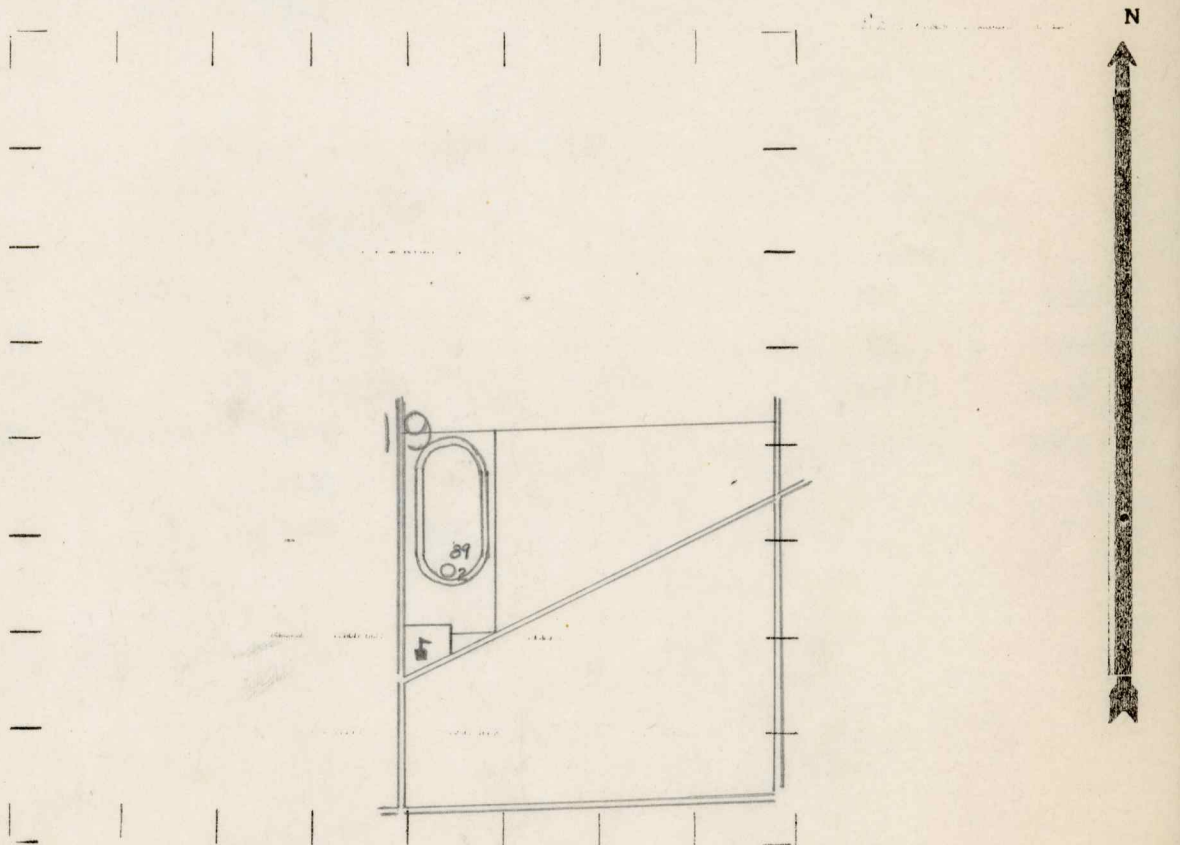
WELL NO. 3 (SERIAL NO. 89) FARM
 STATE Michigan COUNTY Ogemaw DIST. West Branch SEC. 19 TOWN 22N RANGE 2E
 WELL No. 2 (SERIAL NO. 89) FARM County Fair Grounds ACRES
 NAME OF STREAM OR WATERS QUADRANGLE SW-NW-SE

OPERATOR T. F. Caldwell Map West Branch Township, Ogemaw County
 990 990 Feet from North Line of Farm

" " East " " "
 " " South " " "
 330 330 " " West " " "
 990 990 Feet from North Line of Section
 " " East " " "
 " " South " " "
 330 330 " " West " " "

- LEGEND
- LOCATION
 - ⊙ RIG
 - ⊕ DRILLING
 - ⊗ GAS WELL
 - OIL WELL
 - ⦿ SMALL OIL WELL
 - ⊙ DRY HOLE
 - ⊗ DRY SHOWING OIL
 - ⊗ DRY SHOWING GAS
 - ⊙ ABANDONED LOCATION
 - ⊗ ABANDONED GAS WELL
 - ⦿ ABANDONED OIL WELL

NOTE: Below make tracing from map, (when no map is obtainable make sketch) showing farm, center of section, this location with measurements and also wells, dry holes, or other locations in the vicinity of this location.



REMARKS:

SIGNED R. L. Yeager
 Superintendent or Foreman.

Signed