



Western Michigan University
ScholarWorks at WMU

Legacy Scout Tickets from Pure Oil Company

8-20-2021

MGRRE_PureOilScoutTickets_County Fair Grounds_3_21129033510000

MGRRE
Western Michigan University

Follow this and additional works at: <https://scholarworks.wmich.edu/pure>



Part of the Geology Commons

WMU ScholarWorks Citation

MGRRE, "MGRRE_PureOilScoutTickets_County Fair Grounds_3_21129033510000" (2021). *Legacy Scout Tickets from Pure Oil Company*. 7787.
<https://scholarworks.wmich.edu/pure/7787>

This Document is brought to you for free and open access via ScholarWorks at WMU. It has been accepted for inclusion in Legacy Scout Tickets from Pure Oil Company by an authorized administrator of ScholarWorks at WMU. See the National Digital Catalogue - Science Base Catalogue for more collections submitted by MGRRE.



MGRRE_PureOilScoutTickets_County Fair Grounds_3_21129033510000

API 21129033510000

Permit Number 3351

Lease Name County Fair Grounds

Well Number 3

County Ogemaw

Township 22N

Range 02E

Section 19

2021 DEQ or Pure co_name Sappington, Carol J.

Pure Number 92

Latitude 44.28287

Longitude -84.2321

DATE April 2, 1941

LOCATION REPORT

No. 92DATE June 13, 1938

Corrected

LOCATION REPORT

No.

STATE Michigan COUNTY Ogemaw DIST. West Branch TWP. SEC. 19 TOWN 22 N RANGE 2 EWELL No. 3 (SERIAL No. 92) FARM County Fair Grounds ACRESNAME OF STREAM OR WATERS QUADRANGLE NE NW SEOPERATOR Bachelder and Callaher Map West Branch Township, Ogemaw County

Feet from North Line of Farm

" " East " " "

" " South " " "

" " West " " "

Feet from North Line of Section

" " East " " "

" " South " " "

" " West " " "

LEGEND

○ LOCATION

① RIG

⊕ DRILLING

☀ GAS WELL

● OIL WELL

⬮ SMALL OIL WELL

⊙ DRY HOLE

⬮ DRY SHOWING OIL

☀ DRY SHOWING GAS

⊙ ABANDONED LOCATION

☀ ABANDONED GAS WELL

⬮ ABANDONED OIL WELL

NOTE: Below make tracing from map, (when no map is obtainable make sketch) showing farm, center of section, this location with measurements and also wells, dry holes, or other locations in the vicinity of this location.

See plat - Serial No. 92.

REMARKS: Change of operator.

SIGNED

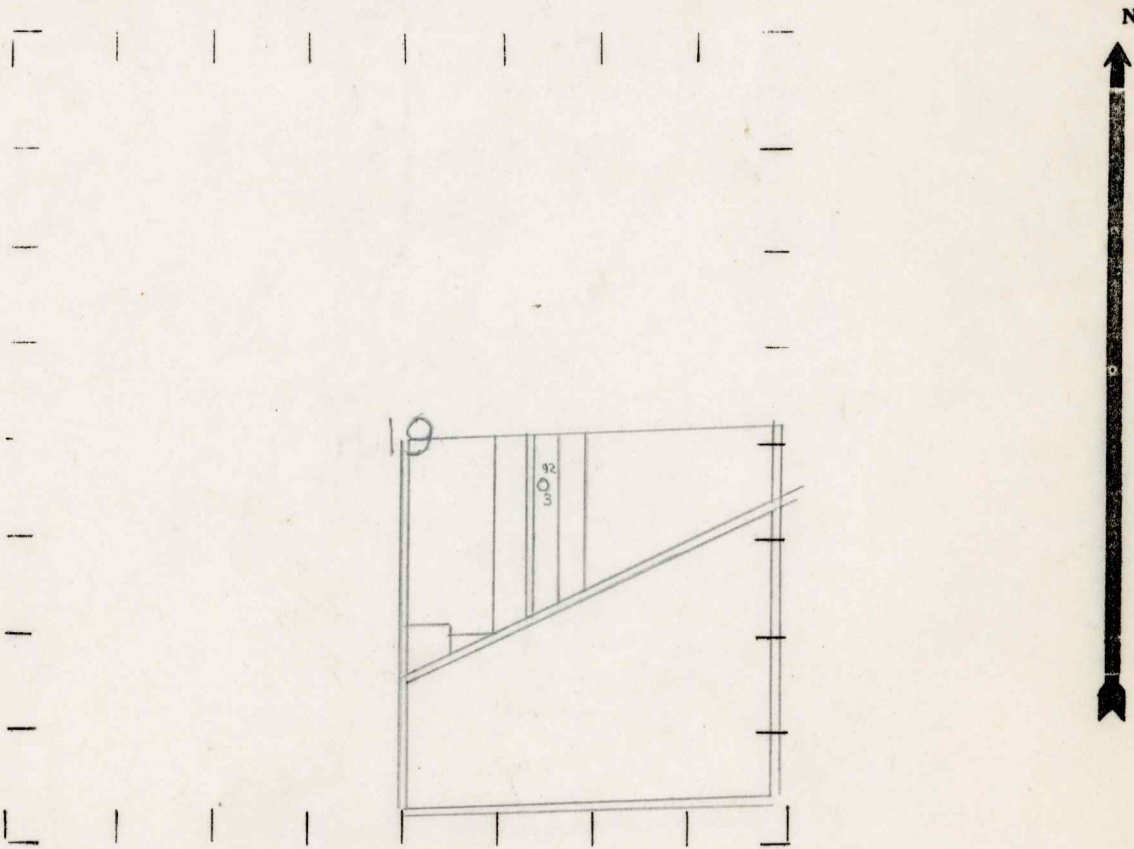
Superintendent or Foreman.

NAME OF STREAM OR WATERS
 WELL No. 33 (SERIAL No. 92) FARM
 STATE Michigan COUNTY Ogemaw DIST. West Branch SEC. 19 TOWN 22 N RANGE 2 E
 PREC. County Fair Grounds
 QUADRANGLE NE NW SE

OPERATOR T. F. Caldwell, Inc. Map West Branch Township, Ogemaw County
 T.F. Caldwell Inc.
 Feet from North Line of Farm
 3330 " " East " " "
 60 60 " " South East " "
 " " West " " "
 3330 Feet from North Line of Section 1/4
 " " East " " "
 " " South " " "
 9990 " " West " 1/4 "

- LEGEND
- LOCATION
 - ⊕ RIG
 - ⊕ DRILLING
 - ☀ GAS WELL
 - OIL WELL
 - ⬮ SMALL OIL WELL
 - ⊕ DRY HOLE
 - ⬮ DRY SHOWING OIL
 - ⊕ DRY SHOWING GAS
 - ⊕ ABANDONED LOCATION
 - ☀ ABANDONED GAS WELL
 - ⬮ ABANDONED OIL WELL

NOTE: Below make tracing from map, (when no map is obtainable make sketch) showing farm, center of section, this location with measurements and also wells, dry holes, or other locations in the vicinity of this location.



REMARKS: This location was abandoned by W. J. Sovereign

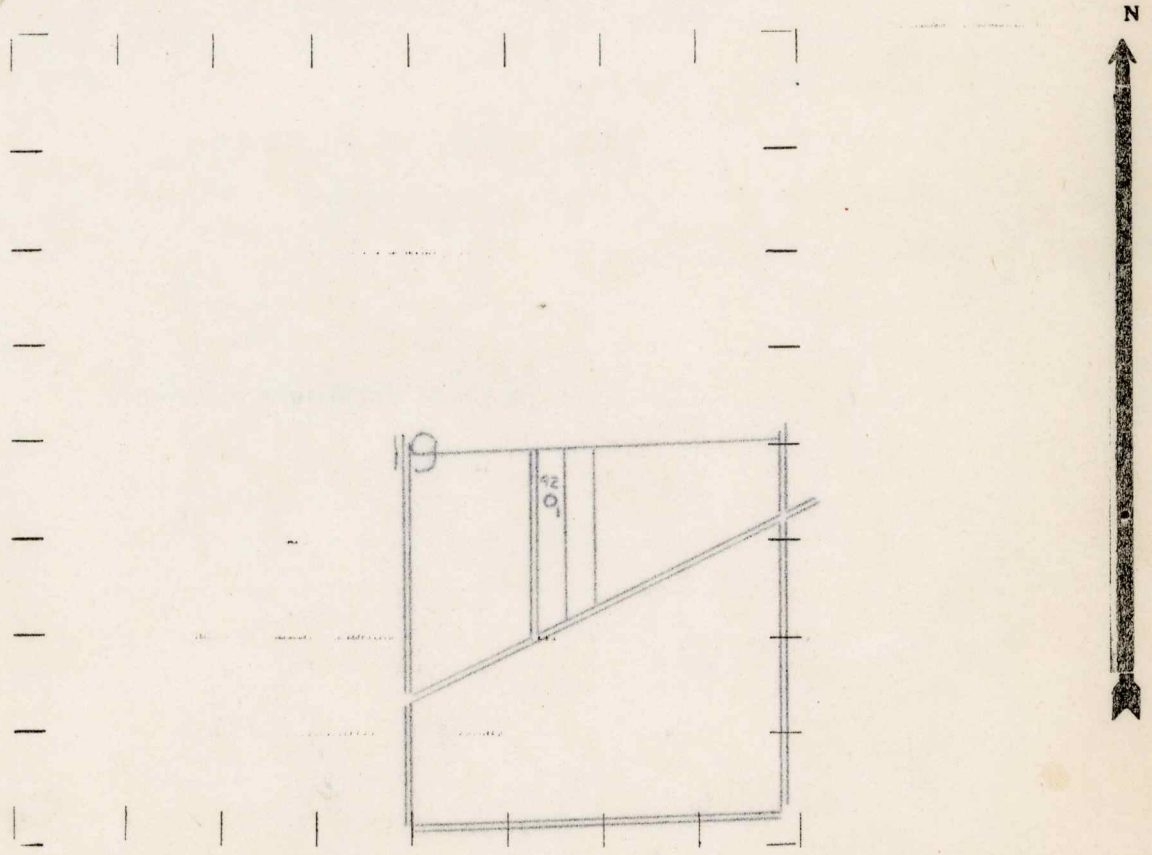
SIGNED R. L. Gage
 Superintendent or Foreman.

MEET No. 32 (SERIAL No. 83) E.V.B.W. COUNTY East Branch
 STATE Michigan COUNTY Ogemaw DIST. West Branch SEC. 19 TOWN 22N RANGE 2E
 WELL No. 1 (SERIAL No. 92) FARM Agricultural Grounds ACRES
 NAME OF STREAM OR WATERS QUADRANGLE NE-NW-SE
 OPERATOR W. J. Sovereign Map West Branch Township, Ogemaw County
 359 359 Feet from North Line of Farm
 338 338 " " East " " "
 " " South " " "
 " " West " " "
 359 359 Feet from North Line of Section
 " " East " " "
 " " South " " "
 982 982 " " West " " 1/4 "

LEGEND

- | | |
|------------------|----------------------|
| ○ LOCATION | ⊙ DRY HOLE |
| ① RIG | ⊙ DRY SHOWING OIL |
| ⊕ DRILLING | ⊙ DRY SHOWING GAS |
| ☀ GAS WELL | ⊙ ABANDONED LOCATION |
| ● OIL WELL | ☀ ABANDONED GAS WELL |
| ⊙ SMALL OIL WELL | ● ABANDONED OIL WELL |

NOTE: Below make tracing from map, (when no map is obtainable make sketch) showing farm, center of section, this location with measurements and also wells, dry holes, or other locations in the vicinity of this location.



REMARKS:

SIGNED

R. H. Yeager

Superintendent or Foreman.

Date 9/19/35

No. 92

State Michigan County Ogemaw Twp. West Branch Sec. 19 Twp. 22N Rge. 2E

Well No. 1 (County No.) 92 Farm Agricultural Grounds Acres

Operator W. J. Sovereign Information secured ^{by} ~~from~~ Scouting Department

Date well started	Not started	Date well completed	Not completed	Elevation
-------------------	-------------	---------------------	---------------	-----------

PRODUCTION RECORD

1st 24 hours natural	<u>Location Abandoned</u>
----------------------	---------------------------

2nd 24 hours natural

No. of
quarts

Date of shot

From to

From to

Date of acid.....No. of gallons

shot
1st 24 hours after acid

shot

2nd 24 hours after acid

FORMATION AND CASING RECORD

[illegible]

Remarks

Signed S. N. Bell

Michigan Producing Division

Date October 8, 1936 No. 92
State Michigan County Ogemaw Dist. West Branch Twp. 19 Sec. 22 N Rge. 2 E
Well No. 3 (Serial No.) 92 (County No.) Farm County Fair Grounds Acres
Operator T. F. Caldwell, Inc. Information secured from by ~~XXXX~~ Scouting Department
Date well started 8-4-36 Date well completed 10-1-36 Elevation 964.6

PRODUCTION RECORD

1st 24 hours natural **Filled up 500'**
2nd 24 hours natural
Date of shot **10-2-36** No. of quarts **100** From **2675** to **2725** From to
Date of acid No. of gallons
1st 24 hours after ~~acid~~ **shot 19 Bbls.**
2nd 24 hours after acid

FORMATION AND CASING RECORD

Formation	Top	Bottom	Top Pay	Bottom Pay	Remarks	Casing	
						Size	Set At
Berea	1310	1315				10"	239
Antrim	1315	1785				8 1/4"	520
Traverse	1785				Salt water 1795	6-5/8"	1821
Dundee	2571		2587	2593	Show	5-3/16"	2571
			2678	2695			
			2704	2717			
Total Depth		2728					

Remarks

Signed

G. W. Beell