



Western Michigan University  
ScholarWorks at WMU

---

Legacy Scout Tickets from Pure Oil Company

---

8-20-2021

**MGRRE\_PureOilScoutTickets\_Barber, Cora F.\_1\_21129022450000**

MGRRE

*Western Michigan University*

Follow this and additional works at: <https://scholarworks.wmich.edu/pure>



Part of the Geology Commons

---

#### **WMU ScholarWorks Citation**

MGRRE, "MGRRE\_PureOilScoutTickets\_Barber, Cora F.\_1\_21129022450000" (2021). *Legacy Scout Tickets from Pure Oil Company*. 7788.

<https://scholarworks.wmich.edu/pure/7788>

This Document is brought to you for free and open access via ScholarWorks at WMU. It has been accepted for inclusion in Legacy Scout Tickets from Pure Oil Company by an authorized administrator of ScholarWorks at WMU. See the National Digital Catalogue - Science Base Catalogue for more collections submitted by MGRRE.



---

**MGRRE\_PureOilScoutTickets\_Barber, Cora F.\_1\_21129022450000**

API 21129022450000

Permit Number 2245

Lease Name Barber, Cora F.

Well Number 1

County Ogemaw

Township 22N

Range 02E

Section 28

2021 DEQ or Pure co\_name Muskegon Development Company

Pure Number 93

Latitude 44.27062

Longitude -84.20448

THE PURE OIL COMPANY

DATE November 22, 1934

LOCATION REPORT

No. 93

STATE Michigan COUNTY Ogemaw DIST. West Branch SEC. 28 TOWN 22N RANGE 2E

WELL No. 1 (SERIAL No. 93) FARM Cora F. Barber ACRES

NAME OF STREAM OR WATERS QUADRANGLE SW-SW-NW

OPERATOR Muskegon Development Company Map West Branch Township, Ogemaw County

Feet from North Line of Farm

" " East " " "

330 330 " " South " " "

330 330 " " West " " "

Feet from North Line of Section

" " East " " "

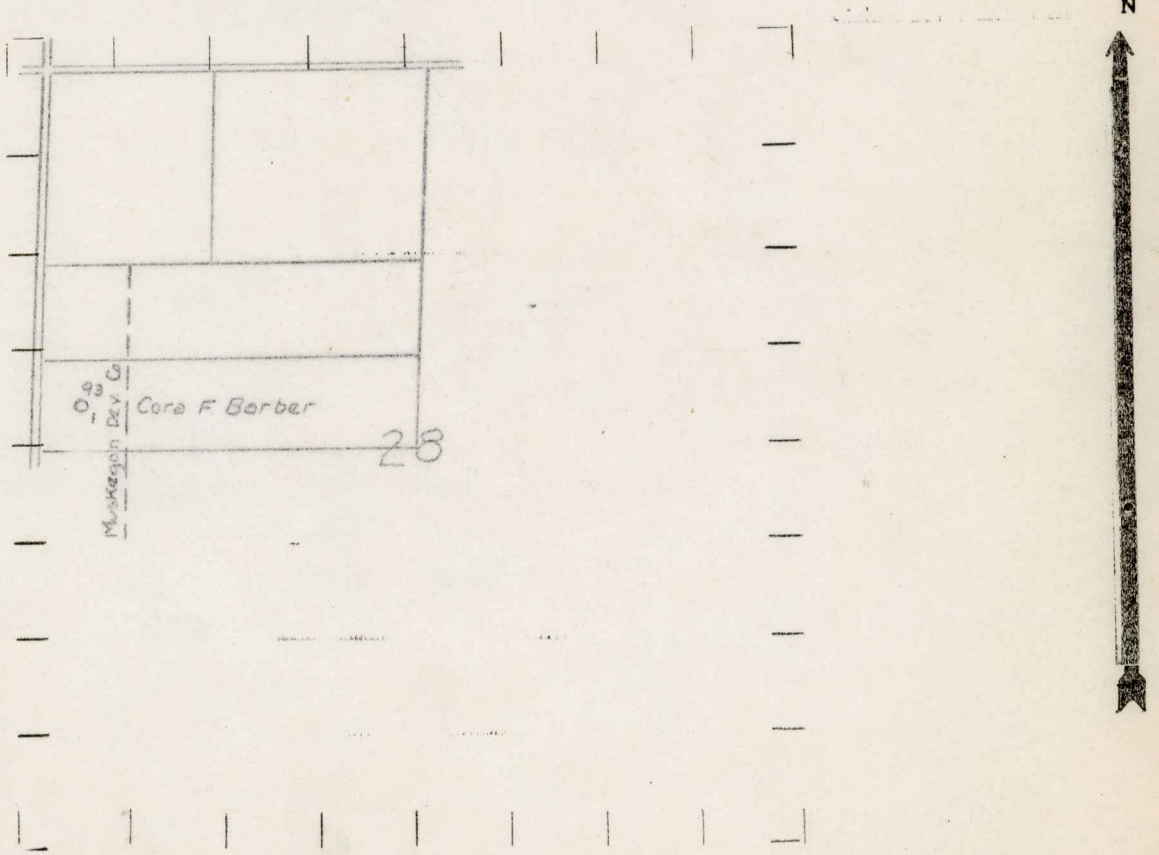
330 330 " " South " " 1/4

330 330 " " West " " "

LEGEND

- LOCATION
- ⊕ RIG
- ⊕ DRILLING
- ☀ GAS WELL
- OIL WELL
- ⊕ SMALL OIL WELL
- ⊖ DRY HOLE
- ⊖ DRY SHOWING OIL
- ⊖ DRY SHOWING GAS
- ⊖ ABANDONED LOCATION
- ⊖ ABANDONED GAS WELL
- ⊖ ABANDONED OIL WELL

NOTE: Below make tracing from map, (when no map is obtainable make sketch) showing farm, center of section, this location with measurements and also wells, dry holes, or other locations in the vicinity of this location.



REMARKS:

SIGNED

*R. L. Yeager*

Superintendent or Foreman.

Michigan Producing Division

Date February 7, 1935 No. 93  
 State Michigan County Ogemaw Dist. West Branch Sec. 28 Twp. 22N Rge. 2E  
 (Serial No.)  
 Well No. 1 (County No.) 93 Farm Cora E. Barber Acres \_\_\_\_\_  
 Operator Muskegon Development Company Information secured from Scouting Dept. by \_\_\_\_\_  
 Date well started 12/27/34 Date well completed 1/26/35 Elevation 925.6'

PRODUCTION RECORD

1st 24 hours natural Filled up 1300'  
 2nd 24 hours natural \_\_\_\_\_  
 Date of shot \_\_\_\_\_ No. of quarts \_\_\_\_\_ From \_\_\_\_\_ to \_\_\_\_\_ From \_\_\_\_\_ to \_\_\_\_\_  
 Date of acid 1/30/35 No. of gallons 1000  
 shot \_\_\_\_\_  
 1st 24 hours after acid 135 bbls., net  
 shot \_\_\_\_\_  
 2nd 24 hours after acid \_\_\_\_\_

FORMATION AND CASING RECORD

Formation	Top	Bottom	Top Pay	Bottom Pay	Remarks	Casing	
						Size	Set at
Sunbury	1172	1195				10"	225'
Berea	1195					8 1/4"	305'
Antrim	1275					6-5/8"	2529'
Traverse	1739	S.L.M.					
Dundee	2526	S.L.M.	2550	Show			
			2560	"			
			2692	2700			
<b>Total Depth</b>		2700					

Remarks Show Gas 1745'

Signed G. H. Bell