



Western Michigan University
ScholarWorks at WMU

Legacy Scout Tickets from Pure Oil Company

8-20-2021

**MGRRE_PureOilScoutTickets_Baumchen
Frank_1_21129032070000**

MGRRE
Western Michigan University

Follow this and additional works at: <https://scholarworks.wmich.edu/pure>



Part of the Geology Commons

WMU ScholarWorks Citation

MGRRE, "MGRRE_PureOilScoutTickets_Baumchen Frank_1_21129032070000" (2021). *Legacy Scout Tickets from Pure Oil Company*. 7796.
<https://scholarworks.wmich.edu/pure/7796>

This Document is brought to you for free and open access via ScholarWorks at WMU. It has been accepted for inclusion in Legacy Scout Tickets from Pure Oil Company by an authorized administrator of ScholarWorks at WMU. See the National Digital Catalogue - Science Base Catalogue for more collections submitted by MGRRE.



MGRRE_PureOilScoutTickets_Baumchen Frank_1_21129032070000

API 21129032070000

Permit Number 3207

Lease Name Baumchen Frank

Well Number 1

County Ogemaw

Township 22N

Range 02E

Section 27

2021 DEQ or Pure co_name Marathon Oil Company

Pure Number 101

Latitude 44.26866

Longitude -84.18362

WELL REPORT - OUTSIDE OPERATIONS

SERIAL NO. 101 - 450DATE May 4, 1939STATE Michigan ~~MSB~~ CO. OgemawOPERATOR Henry SappingtonFARM Frank & Henry Baumchen WELL NO. 1-2TWP. West Branch S. 27 T. 22N R. 2E
~~SURVEY~~

LOC. _____

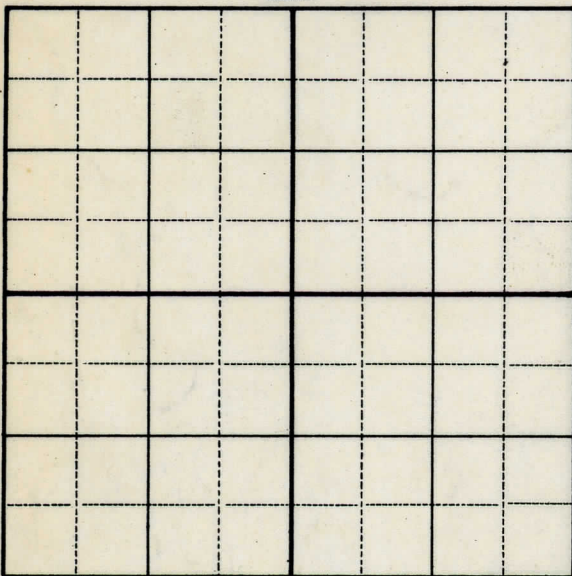
WILDCAT ☐ FIELD ☐ FIELD NAME _____

MAP NO. _____ CO-ORD. _____ ELEV. _____

STATUS _____

Operator's name corrected from:
Kinwell Oil Company

NORTH

DATE 1-18-54 SCOUT LEC

DATE May 1911 NAME WELL REPORT - OUTSIDE SS + SSN + SE
BY ELSH & HEULA BAUMCHEN MEET NO. J-5
OBSERVATION Heula Baumchen

WELL COMPANY
REPORT No. 101
STATE Michigan COUNTY Ogemaw TWP. West Branch SEC. 27 TOWN 22 N RANGE 2 E

WELL No. 1 (SERIAL No. 101) FARM Baumchen ACRES

NAME OF STREAM OR WATERS _____ QUADRANGLE 1W 1W SW

OPERATOR Kinwell Oil Company Map West Branch Township, Ogemaw County
Kinwell Oil Co. West Branch - Oge.

Feet from North Line of Farm
" " East " " "

" " South " " "

" " West " " "

330330 Feet from North Line of Section

" " East " " "

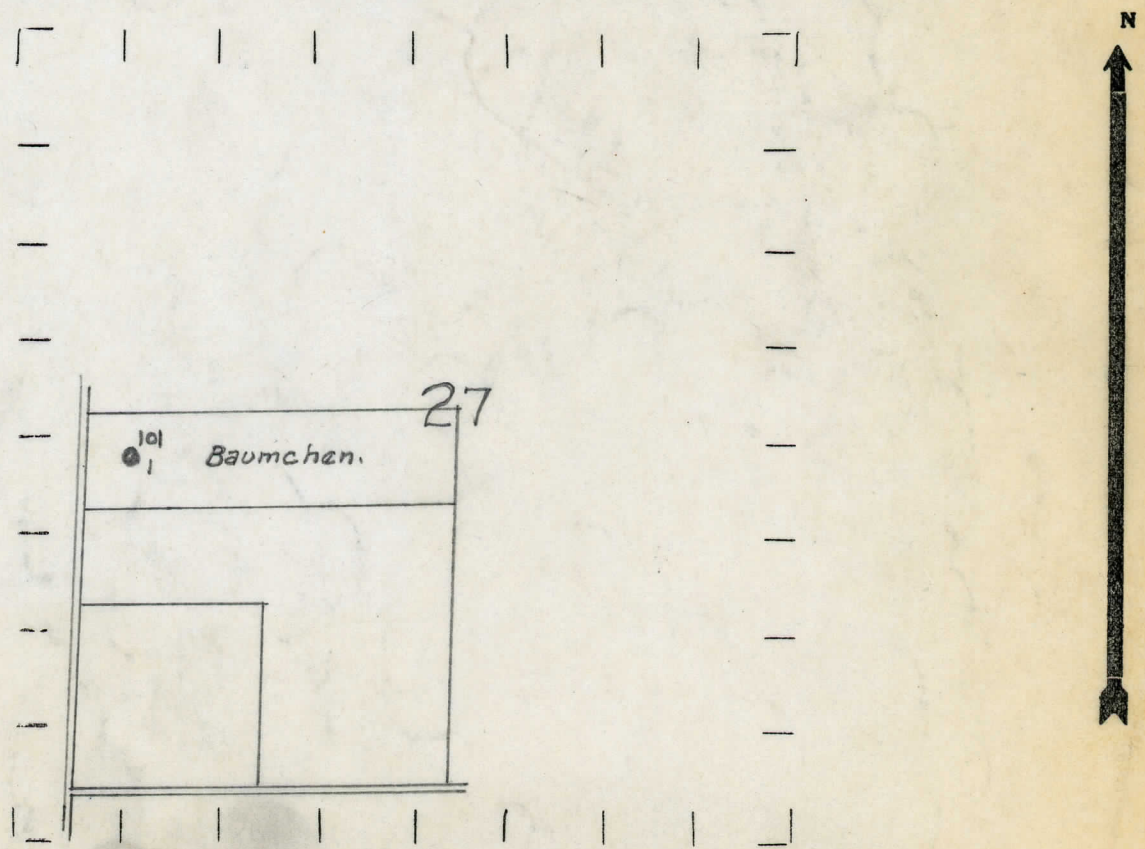
" " South " " "

330330 " " West " " "

LEGEND

- | | |
|------------------|----------------------|
| ○ LOCATION | ⊙ DRY HOLE |
| ① RIG | ⊙ DRY SHOWING OIL |
| ⊕ DRILLING | ⊙ DRY SHOWING GAS |
| ☀ GAS WELL | ⊙ ABANDONED LOCATION |
| ● OIL WELL | ☀ ABANDONED GAS WELL |
| ⬮ SMALL OIL WELL | ● ABANDONED OIL WELL |

NOTE: Below make tracing from map, (when no map is obtainable make sketch) showing farm, center of section, this location with measurements and also wells, dry holes, or other locations in the vicinity of this location.



REMARKS:

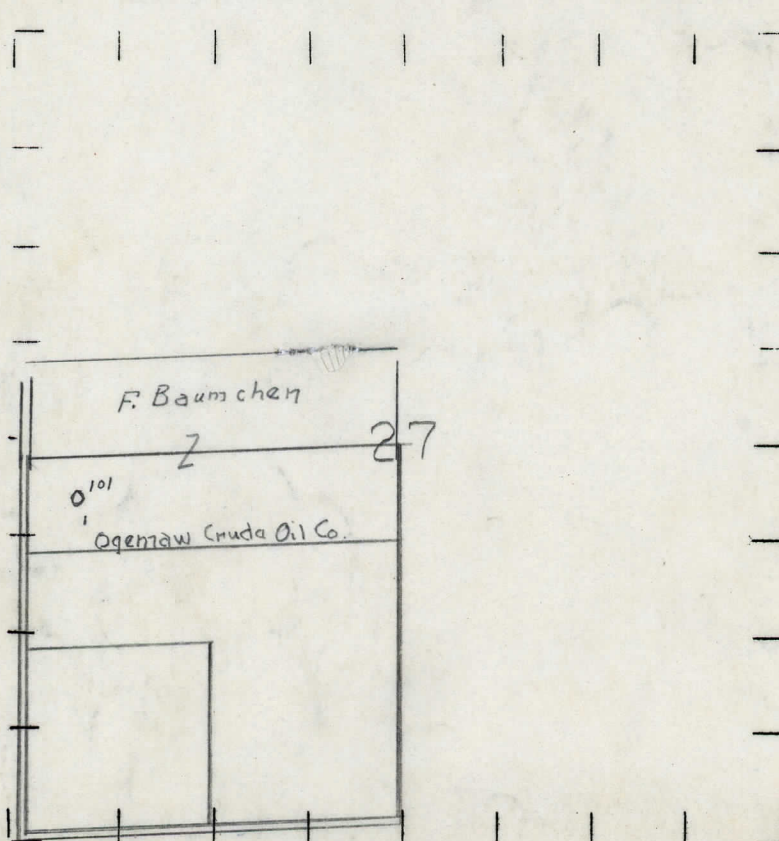
SIGNED R. A. G.
Superintendent or Foreman.

DATE April 23, 1936 COLLECTED corrected LOCATION REPORT No. 101
 STATE Michigan COUNTY Ogemaw DIST. West Branch SEC. 27 TOWN 22 N RANGE 34 E
 WELL No. 11 (SERIAL No. 101) FARM Frank Baumchen ACRES
 NAME OF STREAM OR WATERS QUADRANGLE NW-NW-SW
 OPERATOR Ogemaw Crude Oil Company Map West Branch Township, Ogemaw County

Feet from North Line of Farm
 " " East " " "
330 330 " " South " " "
330 330 " " West " " "
330 330 Feet from North Line of Section
 " " East " " "
 " " South " " "
330 330 " " West " " "

LEGEND
 O LOCATION
 ⊕ RIG
 ⊕ DRILLING
 ☼ GAS WELL
 ● OIL WELL
 ● SMALL OIL WELL
 ⊙ DRY HOLE
 ⊙ DRY SHOWING OIL
 ⊙ DRY SHOWING GAS
 ⊙ ABANDONED LOCATION
 ☼ ABANDONED GAS WELL
 ● ABANDONED OIL WELL

NOTE: Below make tracing from map, (when no map is obtainable make sketch) showing farm, center of section, this location with measurements and also wells, dry holes, or other locations in the vicinity of this location.



REMARKS: Change in operator

SIGNED

P. J. Yeager
Superintendent or Foreman.

DATE December 20, 1934

LOCATION BELOW

LOCATION REPORT

No. 101

STATE Michigan COUNTY Ogemaw

DIST. West Branch SEC. 27

TOWN 22N. RANGE 2E.

WELL No. 1 (SERIAL No. 101) FARM

TWP. West Branch SEC. 27 TOWN 22N. RANGE 2E.

ACRES

NAME OF STREAM OR WATERS

QUADRANGLE NW-NW-SW
NW NW SW

OPERATOR Weber Oil Company

Map West Branch Township, Ogemaw County

Weber Oil Co.

West Branch - Oge.

Feet from North Line of Farm

330 330

330 330

330 330

Feet from North Line of Section

330 330

LEGEND

○ LOCATION

① RIG

⊕ DRILLING

☀ GAS WELL

● OIL WELL

⦿ SMALL OIL WELL

⊖ DRY HOLE

⦿ DRY SHOWING OIL

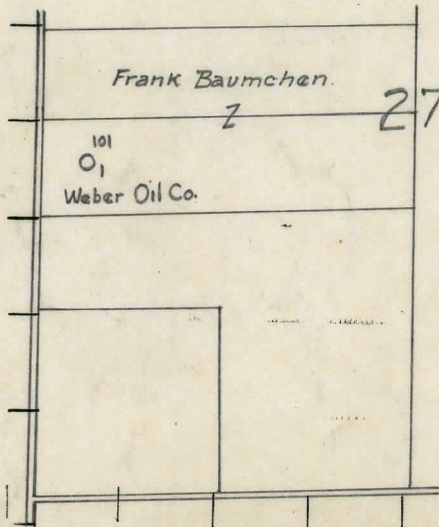
⊖ DRY SHOWING GAS

⊖ ABANDONED LOCATION

☀ ABANDONED GAS WELL

⦿ ABANDONED OIL WELL

NOTE: Below make tracing from map, (when no map is obtainable make sketch) showing farm, center of section, this location with measurements and also wells, dry holes, or other locations in the vicinity of this location.



REMARKS:

SIGNED

R. L. Yeager
Superintendent or Foreman.

Signed G. H. Belf

DIARION

No. 101

Dist.

(Serial No.)

(County No.)

by

Date well completed

Elevation 933.8

Filled up 1400'

No. of

6-16-36

SHOV

3405

225 Bbls.

Total Depth

Remarks

Signed

2436