



Western Michigan University
ScholarWorks at WMU

Legacy Scout Tickets from Pure Oil Company

8-20-2021

MGRRE_PureOilScoutTickets_Decoster, H._1_21129022870000

MGRRE

Western Michigan University

Follow this and additional works at: <https://scholarworks.wmich.edu/pure>



Part of the Geology Commons

WMU ScholarWorks Citation

MGRRE, "MGRRE_PureOilScoutTickets_Decoster, H._1_21129022870000" (2021). *Legacy Scout Tickets from Pure Oil Company*. 7801.

<https://scholarworks.wmich.edu/pure/7801>

This Document is brought to you for free and open access via ScholarWorks at WMU. It has been accepted for inclusion in Legacy Scout Tickets from Pure Oil Company by an authorized administrator of ScholarWorks at WMU. See the National Digital Catalogue - Science Base Catalogue for more collections submitted by MGRRE.



MGRRE_PureOilScoutTickets_Decoster, H._1_21129022870000

API 21129022870000

Permit Number 2287

Lease Name Decoster, H.

Well Number 1

County Ogemaw

Township 22N

Range 02E

Section 19

2021 DEQ or Pure co_name Evaluation and Sales Service

Pure Number 106

Latitude 44.28267

Longitude -84.24358

WELL REPORT - OUTSIDE OPERATIONS

SERIAL NO.

106

STATE Michigan ~~XPSH~~ CO. Ogemaw
OPERATOR Evaluation Sales & Service
FARM H. DeCoster WELL NO. 1
TWP. West Branch S. 19 T. 22N R. 2E
LOC. NE NW SW

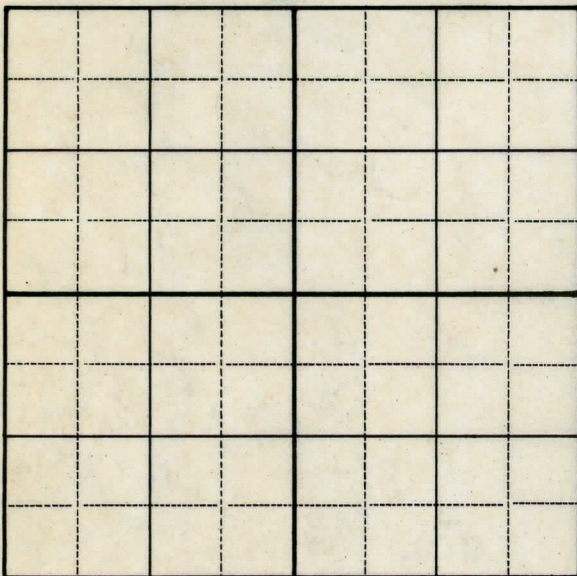
WILDCAT ☐ FIELD ☐ FIELD NAME _____

MAP NO. _____ CO-ORD. _____ ELEV. _____

STATUS _____

Operator's name changed from:
New Consolidated Petroleum Corporation

NORTH

DATE 11-26-48 SCOUT H. J. C.

STATE

STATE

Michigan

PSHX
CO

Ogemaw

OPERATOR

Consolidated Petroleum Producers

FARM

H. DeCoster

WELL NO.

1

TWP.

SURVEY

West Branch

5

19

T

22N

P

2E

LOC.

NE NW SW

WILDCAT ☐ FIELD ☐ FIELD NAME

MAP NO.

CO-ORD.

F1 FV

STATUS

Plugged and Abandoned 10-30-48.

Total Depth 2760'.

NORTH

[illegible]

DATE _____

11-17-48

SCOUT

H. J. G.

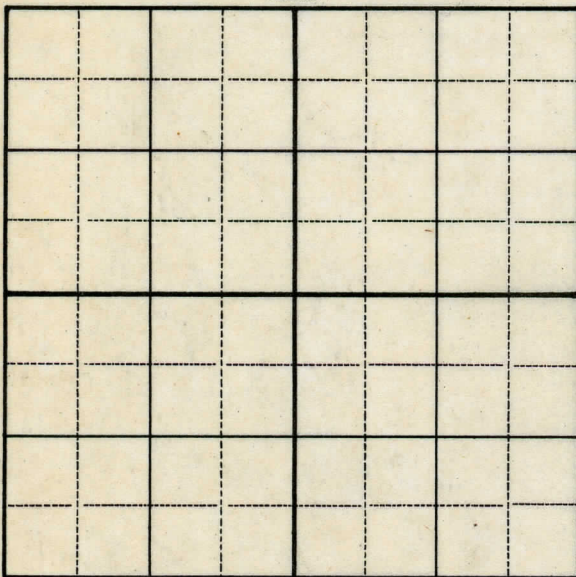
SERIAL NO. 108

STATE Michigan ~~PSH~~ Ogemaw CO.
OPERATOR New Consolidated Petroleum Corporation
FARM H. DeCoster WELL NO. 1
TWP. West Branch S. 19 T. 22N R. 2E
SURVEY
LOC. NE NW SW

WILDCAT ☐ FIELD ☐ FIELD NAME _____
MAP NO. _____ CO-ORD. _____ ELEV. _____
STATUS _____

Operator's name changed from:
Consolidated Petroleum Producers

NORTH



DATE 11-8-48 SCOUT H. J. G.

THE PURE OIL COMPANY

LOCATION REPORT

Date Sept. 27, 1946 Corrected

A.F.E. No. _____

Division Mich. Producing District _____

Lease H. DeCoster

Acres _____ Lease No. _____ Elevation _____ Well No. 1 (Serial No. 106)

Quadrangle NE NW SW Sec. 19 Twp. 22 N Rge. 2 E ~~XBNX~~ ~~XBNX~~ Twp. West Branch

Survey _____ County Ogemaw State Michigan

Operator Consolidated Petroleum Producers Map West Branch Township, Ogemaw County

Feet from North Line of Lease

" " East " " "

" " South " " "

" " West " " "

Feet from North Line of Section

" " East " " "

" " South " " "

" " West " " "

LEGEND

○ Location

☀ Gas Well

● Oil Well

☀ Gas - Distillate Well

○ or ○ Dry Hole

● Dry Showing Oil

☀ Dry Showing Gas

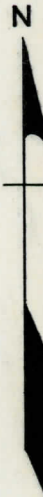
⊗ Abandoned Location

☀ or ☀ Abandoned Gas Well

● or ● Abandoned Oil Well

⊗ or ⊗ Input Well

See plat - Ogemaw #106.



Remarks: Change of operator.

Scale _____

Submitted by Scouting Dept.

~~XBNX~~

Approved by _____ Division Manager

Approved by _____ Vice-President - General Manager

Division

Mich. Producing

District

Lease

H. DeCoster

Date

Sept. 9, 1946

Corrected

LOCATION REPORT

A.F.E. No.

Acres

Lease No.

Elevation

Well No.

1

(Serial No.)

106

Quadrangle

NE NW SW

Sec.

19

Twp.

22 N

Rge.

2 E

Twp.

West Branch

Survey

County

Ogemaw

State

Michigan

Operator

H. M. McClure

Map

West Branch Township, Ogemaw County

Feet from North Line of Lease

" " East " " "

" " South " " "

" " West " " "

Feet from North Line of Section

" " East " " "

" " South " " "

" " West " " "

LEGEND

Location

Gas Well

Oil Well

Gas - Distillate Well

Dry Hole

Dry Showing Oil

Dry Showing Gas

Abandoned Location

Abandoned Gas Well

Abandoned Oil Well

Input Well

See plat - Ogemaw #106.

Remarks:

Change of operator.

Scale

Submitted by

Scouting Dept.

Approved by

Division Manager

Approved by

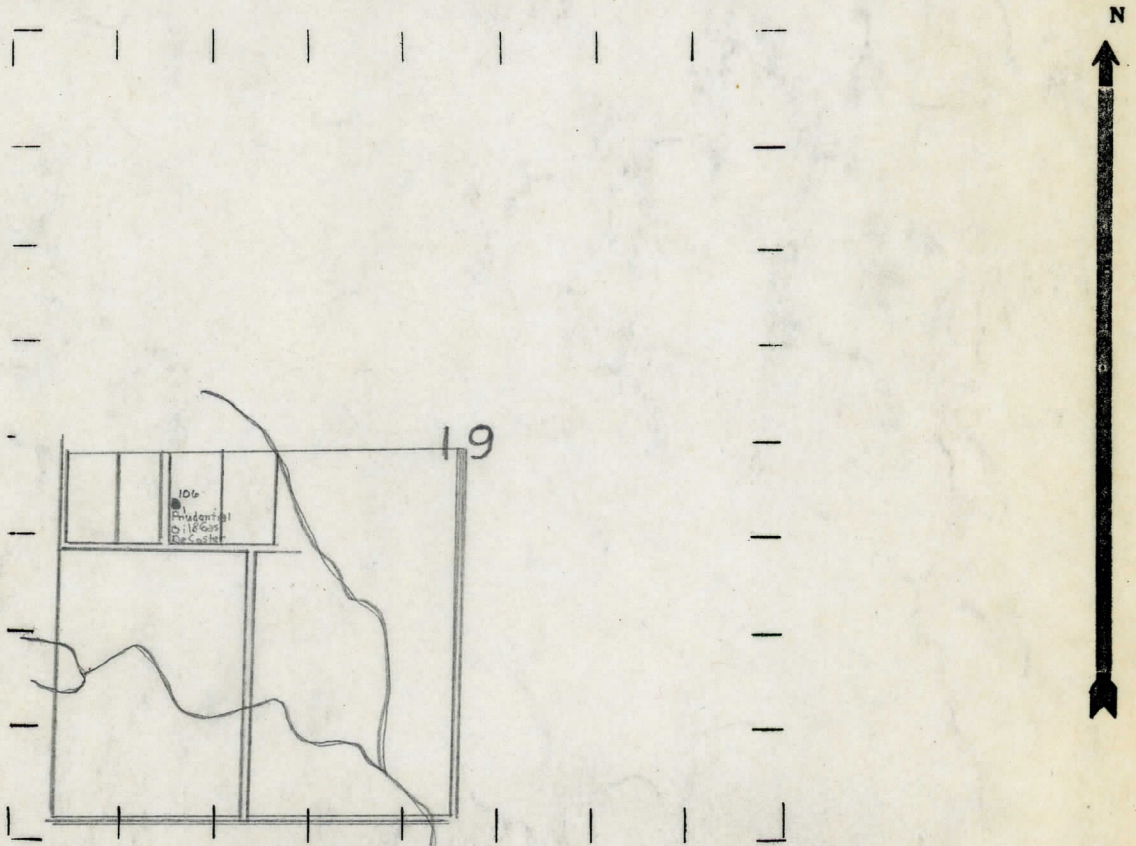
Vice-President - General Manager

DISTRICT West Branch COUNTY Ogemaw TWP. West Branch SEC. 19 TOWN 22 N RANGE 2 E
 WELL No. 1 (SERIAL No. 106) FARM H. H. DeCoaster ACRES 2.5
 NAME OF STREAM OR WATERS _____ QUADRANGLE NE NW SW
 OPERATOR Prudential Oil & Gas Corporation Map West Branch Township, Ogemaw County
Prudential Oil & Gas

38380 Feet from North Line of Farm
35355 " " East " " "
 " " South " " "
 " " West " " "
38380 Feet from North Line of Section 1/4
 " " East " " "
 " " South " " "
745745 " " West " " "

- LEGEND**
- | | |
|------------------|----------------------|
| ○ LOCATION | ⊙ DRY HOLE |
| ① RIG | ◆ DRY SHOWING OIL |
| ⊕ DRILLING | ⊙ DRY SHOWING GAS |
| ☼ GAS WELL | ⊙ ABANDONED LOCATION |
| ● OIL WELL | ☼ ABANDONED GAS WELL |
| ◆ SMALL OIL WELL | ● ABANDONED OIL WELL |

NOTE: Below make tracing from map, (when no map is obtainable make sketch) showing farm, center of section, this location with measurements and also wells, dry holes, or other locations in the vicinity of this location.



REMARKS: change in operator

SIGNED _____
 Superintendent or Foreman.

DATE December 20, 1934

LOCATION REPORT

No. 106
22 N
19
2E

STATE Michigan COUNTY Ogemaw DIST. West Branch SEC. 19 TOWN 22N RANGE 2E
WELL No. 1 (SERIAL No. 106) FARM H. DeCoster ACRES

NAME OF STREAM OR WATERS QUADRANGLE NE-NW-SW

OPERATOR Allen Park Oil & Gas Corporation Map West Branch Township, Ogemaw County
Allen Park Oil & Gas Corp. West Branch - Oge.

380 380 Feet from North Line of Farm

355 355 " " East " " "

" " South " " "

" " West " " "

380 380 Feet from North Line of Section

" " East " " "

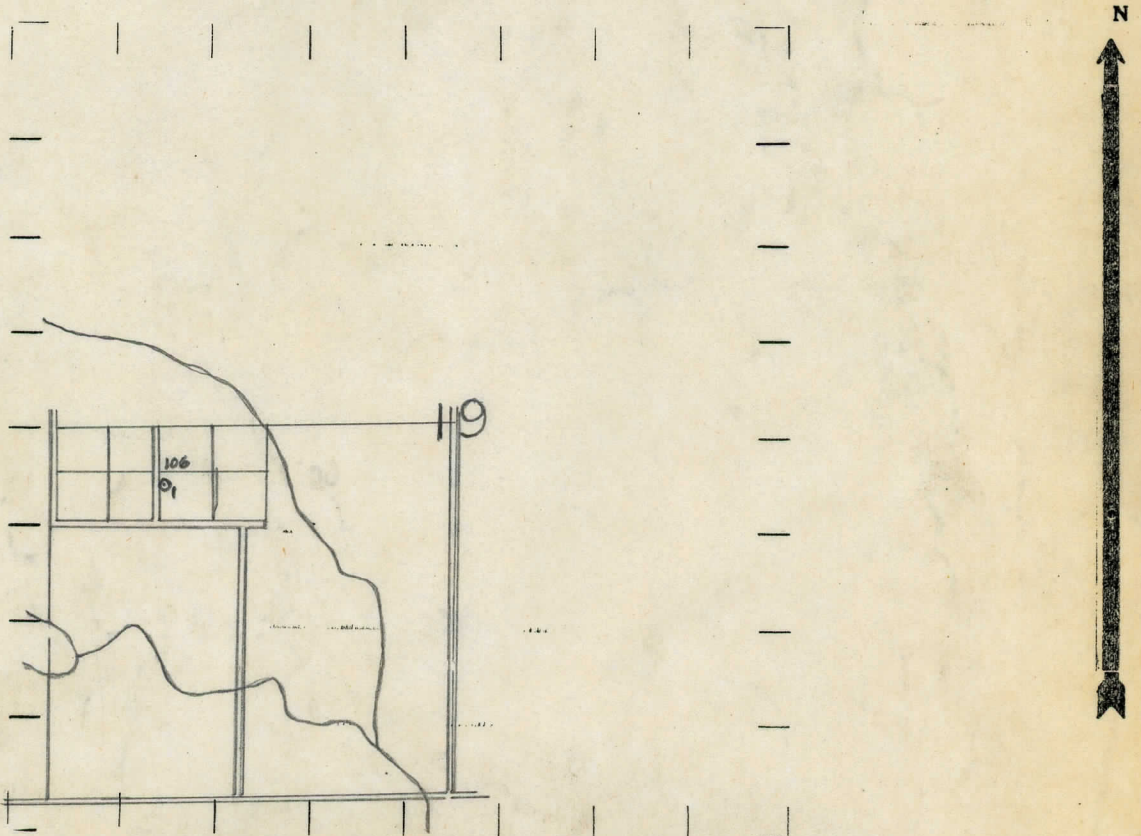
" " South " " "

745 745 " " West " " "

LEGEND

- LOCATION
- ① RIG
- ⊕ DRILLING
- ☀ GAS WELL
- OIL WELL
- ⬮ SMALL OIL WELL
- ⊙ DRY HOLE
- ⬮ DRY SHOWING OIL
- ☀ DRY SHOWING GAS
- ⊙ ABANDONED LOCATION
- ☀ ABANDONED GAS WELL
- ⬮ ABANDONED OIL WELL

NOTE: Below make tracing from map, (when no map is obtainable make sketch) showing farm, center of section, this location with measurements and also wells, dry holes, or other locations in the vicinity of this location.



REMARKS:

SIGNED

R. L. Yeager
Superintendent or Foreman.

Signed