



Western Michigan University
ScholarWorks at WMU

Legacy Scout Tickets from Pure Oil Company

8-20-2021

MGRRE_PureOilScoutTickets_Donavan, Jane
M._2_21129023030000

MGRRE
Western Michigan University

Follow this and additional works at: <https://scholarworks.wmich.edu/pure>



Part of the Geology Commons

WMU ScholarWorks Citation

MGRRE, "MGRRE_PureOilScoutTickets_Donavan, Jane M._2_21129023030000" (2021). *Legacy Scout Tickets from Pure Oil Company*. 7805.
<https://scholarworks.wmich.edu/pure/7805>

This Document is brought to you for free and open access via ScholarWorks at WMU. It has been accepted for inclusion in Legacy Scout Tickets from Pure Oil Company by an authorized administrator of ScholarWorks at WMU. See the National Digital Catalogue - Science Base Catalogue for more collections submitted by MGRRE.



MGRRE_PureOilScoutTickets_Donavan, Jane M._2_21129023030000

API 21129023030000

Permit Number 2303

Lease Name Donavan, Jane M.

Well Number 2

County Ogemaw

Township 22N

Range 02E

Section 19

2021 DEQ or Pure co_name Ide Oil and Gas Corporation

Pure Number 110

Latitude 44.28457

Longitude -84.23714

THE PURE OIL COMPANY

DATE February 15, 1940

LOCATION REPORT

No. 110

STATE Michigan COUNTY Ogemaw DIST. West Branch TWP. West Branch SEC. 19 TOWN 22 N RANGE 2 E
WELL No. 2 (SERIAL No. 110) FARM J. Donovan ACRES SE SE NW NW

NAME OF STREAM OR WATERS _____ QUADRANGLE SE SE NW NW

OPERATOR Ide Oil & Gas Corporation Map West Branch, Ogemaw County
Ide Oil & Gas Corp. W-Branch - Oge.
Feet from North Line of Farm _____

“ “ East “ “ “

“ “ South “ “ “

“ “ West “ “ “

Feet from North Line of Section _____

“ “ East “ “ “

“ “ South “ “ “

“ “ West “ “ “

LEGEND

○ LOCATION

⊙ RIG

⊕ DRILLING

☼ GAS WELL

● OIL WELL

⦿ SMALL OIL WELL

⊖ DRY HOLE

⦿ DRY SHOWING OIL

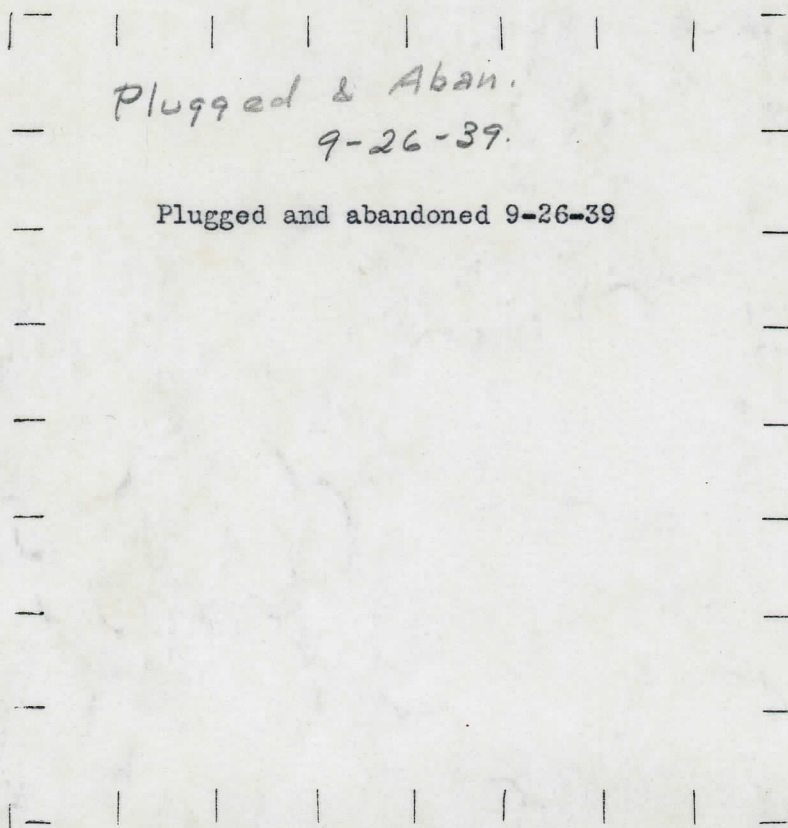
⊖ DRY SHOWING GAS

⦿ ABANDONED LOCATION

☼ ABANDONED GAS WELL

⦿ ABANDONED OIL WELL

NOTE: Below make tracing from map, (when no map is obtainable make sketch) showing farm, center of section, this location with measurements and also wells, dry holes, or other locations in the vicinity of this location.



REMARKS:

SIGNED

Superintendent or Foreman.

DATE January 11, 1935

LOCATION BEFORE

No. 110

DATE January 11, 1935

LOCATION REPORT

No. 110

STATE Michigan COUNTY Ogemaw

DIST. West Branch

19

22 N

2 E

COUNTY Ogemaw

TWP. West Branch

SEC. 19

TOWN 22-N

RANGE 2E

WELL No. 2 (SERIAL No. 110) FARM

PREC. Jane M. Donovan

Jane M. Donovan

ACRES

NAME OF STREAM OR WATERS

QUADRANGLE

SE-SE-NW,
SE-SE-NW

OPERATOR Ide Oil & Gas Corp.

Map West Branch - Ogemaw County

Ide Oil & Gas Corp.

West Branch - Oge.

Feet from North Line of Farm

330 330 " " East " " "

330 330 " " South " " "

" " West " " "

Feet from North Line of Section

330 330 " " East " " $\frac{1}{4}$ $\frac{1}{4}$

330 330 " " South " " $\frac{1}{4}$ $\frac{1}{4}$

" " West " " "

LEGEND

○ LOCATION

⊙ RIG

⊕ DRILLING

☼ GAS WELL

● OIL WELL

⦿ SMALL OIL WELL

⊖ DRY HOLE

⦿ DRY SHOWING OIL

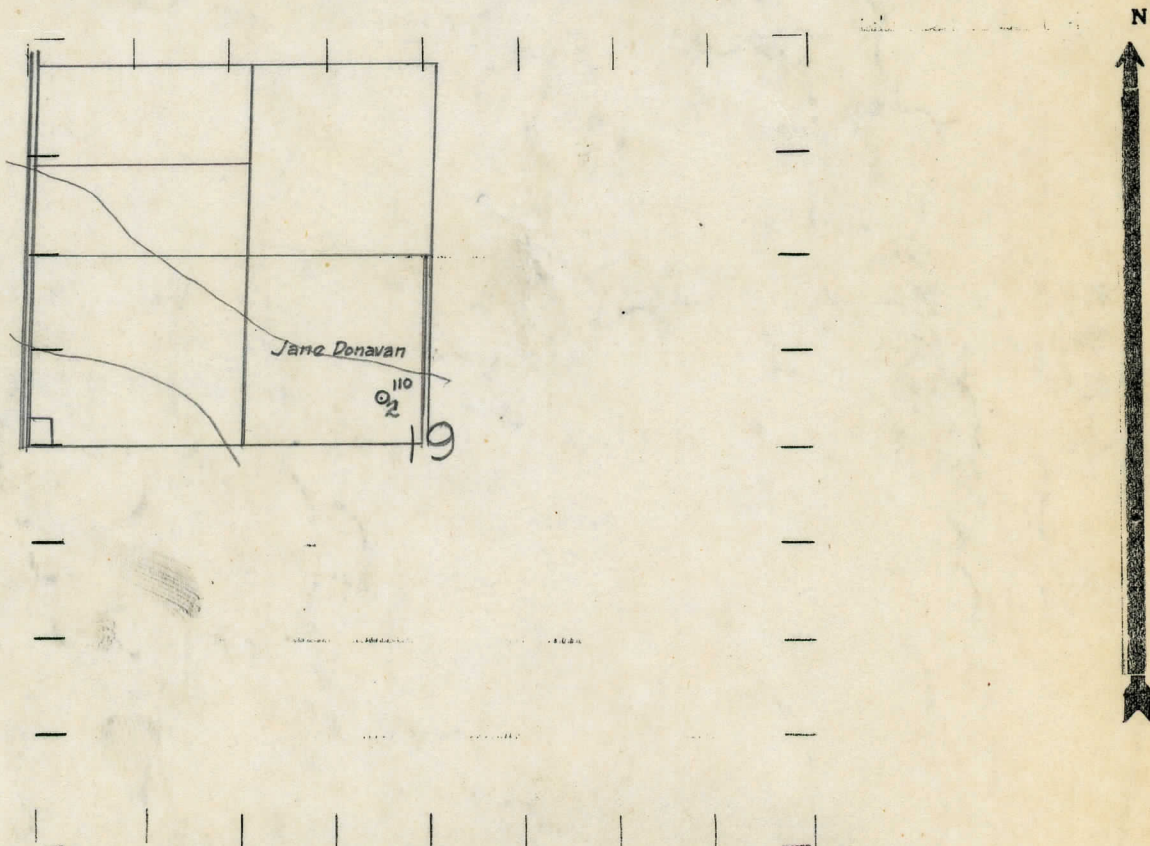
⊖ DRY SHOWING GAS

⊖ ABANDONED LOCATION

☼ ABANDONED GAS WELL

⦿ ABANDONED OIL WELL

NOTE: Below make tracing from map, (when no map is obtainable make sketch) showing farm, center of section, this location with measurements and also wells, dry holes, or other locations in the vicinity of this location.



REMARKS:

SIGNED

R. L. Yeager

Superintendent or Foreman.

Michigan Producing Division

Date June 20, 1935 No. 110

State Michigan County Ogemaw Dist. West Branch Twp. 22N Rge. 2E

Well No. 2 (Serial No.) (County No.) 110 Farm Jane M. Donovan Acres

Operator Ide Oil & Gas Corporation Information secured from Scouting Dept.

Date well started 3/9/35 Date well completed 6/15/35 Elevation 967.7'

PRODUCTION RECORD

1st 24 hours natural **Filled up 2200'**

2nd 24 hours natural

Date of shot No. of quarts From to From to

Date of acid **6/12/35** No. of gallons **1000 gals.**

shot

1st 24 hours after acid **Est. 75 bbls., net**

shot

2nd 24 hours after acid

FORMATION AND CASING RECORD

[illegible][illegible]

Signed D. A. Bell