



Western Michigan University
ScholarWorks at WMU

Legacy Scout Tickets from Pure Oil Company

8-20-2021

MGRRE_PureOilScoutTickets_Donovan, Jane M._4_na

MGRRE

Western Michigan University

Follow this and additional works at: <https://scholarworks.wmich.edu/pure>



Part of the Geology Commons

WMU ScholarWorks Citation

MGRRE, "MGRRE_PureOilScoutTickets_Donovan, Jane M._4_na" (2021). *Legacy Scout Tickets from Pure Oil Company*. 7807.

<https://scholarworks.wmich.edu/pure/7807>

This Document is brought to you for free and open access via ScholarWorks at WMU. It has been accepted for inclusion in Legacy Scout Tickets from Pure Oil Company by an authorized administrator of ScholarWorks at WMU. See the National Digital Catalogue - Science Base Catalogue for more collections submitted by MGRRE.



MGRRE_PureOilScoutTickets_Donovan, Jane M._4_na

API na

Permit Number na

Lease Name Donovan, Jane M.

Well Number 4

County Ogemaw

Township 22N

Range 01E

Section 19

2021 DEQ or Pure co_name Ide Oil & Gas Corp

Pure Number 112

Latitude 44.2835213

Longitude -84.3583594

DATE January 11, 1935

LOCATION REPORT

No. 112

STATE Michigan

COUNTY Ogemaw

DIST. Ogemaw

TWP. West Branch

19

22N

2E.

WELL No. 4

(SERIAL No. 112)

FARM

TWP. West Branch

SEC. 19

TOWN 22-N

RANGE 2E

PREC. Jane M. Donovan

Jane M. Donovan

ACRES

NAME OF STREAM OR WATERS

QUADRANGLE

NW-SE-NW
NW-SE-NW

OPERATOR

Ide Oil & Gas Corp.

Map

West Branch - Ogemaw County

Ide Oil & Gas Corp.

West Branch - Oge.

330 330

Feet from North Line of Farm

" " East " " "

" " South " " "

330 330 " " West " " "

Feet from North Line of Section

990 990 " " East " " $\frac{1}{4}$ " $\frac{1}{4}$

990 990 " " South " " $\frac{1}{4}$ " $\frac{1}{4}$

" " West " " "

LEGEND

○ LOCATION

① RIG

⊕ DRILLING

☀ GAS WELL

● OIL WELL

⊙ SMALL OIL WELL

⊙ DRY HOLE

⊙ DRY SHOWING OIL

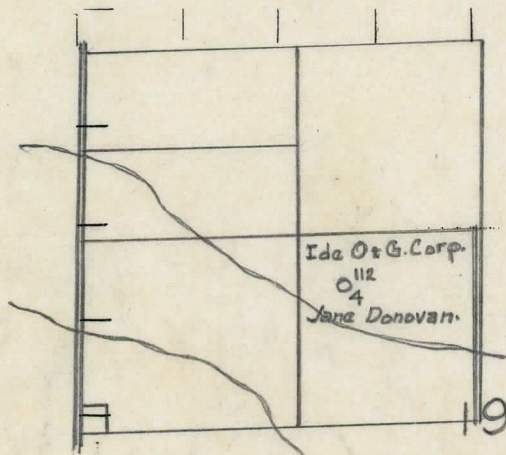
⊙ DRY SHOWING GAS

⊙ ABANDONED LOCATION

⊙ ABANDONED GAS WELL

⊙ ABANDONED OIL WELL

NOTE: Below make tracing from map, (when no map is obtainable make sketch) showing farm, center of section, this location with measurements and also wells, dry holes, or other locations in the vicinity of this location.



REMARKS:

SIGNED

R. L. Yager

Superintendent or Foreman.

Michigan Producing Division

Date May 7, 1936

No. 112

State Michigan County Ogemaw

Dist.

Twp. West Branch

Sec. 19

Twp 33 N

Rge 2 II

(Serial No.)

(Serial No.)

Well No. 4

(County No.) 112

Farm Jane M. Donovan

Acres

Operator **Ide Oil & Gas Corporation**

Information secured ^{by} ~~from~~ Scouting Department

Date well started **Not started**

Date well completed **Not completed**

Elevation

PRODUCTION RECORD

1st 24 hours natural Location abandoned

2nd 24 hours natural

Date of shot..... No. of
quarts..... From to From to

Date of acid No. of gallons

shot
1st 24 hours after acid

shot

2nd 24 hours after acid

FORMATION AND CASING RECORD

[illegible]

Remarks

Signed

G. A. Bell