



Western Michigan University  
ScholarWorks at WMU

---

Legacy Scout Tickets from Pure Oil Company

---

8-20-2021

## MGRRE\_PureOilScoutTickets\_Donovan, Edith E.\_1\_na

MGRRE

*Western Michigan University*

Follow this and additional works at: <https://scholarworks.wmich.edu/pure>



Part of the Geology Commons

---

### WMU ScholarWorks Citation

MGRRE, "MGRRE\_PureOilScoutTickets\_Donovan, Edith E.\_1\_na" (2021). *Legacy Scout Tickets from Pure Oil Company*. 7815.

<https://scholarworks.wmich.edu/pure/7815>

This Document is brought to you for free and open access via ScholarWorks at WMU. It has been accepted for inclusion in Legacy Scout Tickets from Pure Oil Company by an authorized administrator of ScholarWorks at WMU. See the National Digital Catalogue - Science Base Catalogue for more collections submitted by MGRRE.



---

## MGRRE\_PureOilScoutTickets\_Donovan, Edith E.\_1\_na

API na

Permit Number na

Lease Name Donovan, Edith E.

Well Number 1

County Ogemaw

Township 22N

Range 02E

Section 19

2021 DEQ or Pure co\_name Sovereign, W. J.

Pure Number 120

Latitude 44.2837748

Longitude -84.2360396

DATE January 11, 1935

## LOCATION REPORT

No. 120STATE Michigan COUNTY OgemawDIST. West Branch TWP. West Branch SEC. 19TOWN 22 N RANGE 2 EWELL No. 1 (SERIAL No. 120) FARMPREC. Edith Donovan  
Edith Donovan

ACRES

NAME OF STREAM OR WATERS

QUADRANGLE SW-SW-NW  
SW-SW-NWOPERATOR W. J. SovereignMap West Branch Twp., Ogemaw County

Feet from North Line of Farm

" " East " " "

330 330 " " South " " "330 330 " " West " " "

Feet from North Line of Section

" " East " " "

330 330 " " South " " 1/4330 330 " " West " " "

## LEGEND

○ LOCATION

① RIG

⊕ DRILLING

☼ GAS WELL

● OIL WELL

⦿ SMALL OIL WELL

⊖ DRY HOLE

⦿ DRY SHOWING OIL

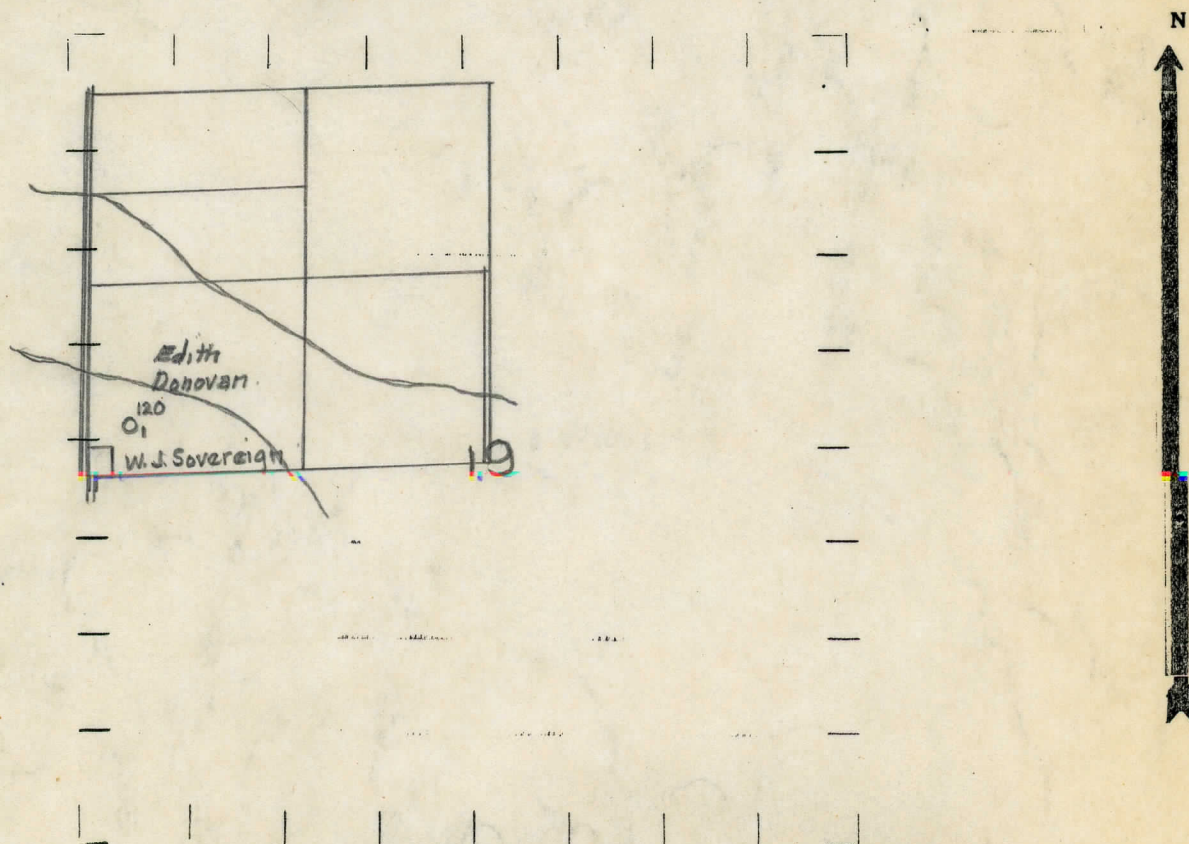
⊖ DRY SHOWING GAS

⊖ ABANDONED LOCATION

☼ ABANDONED GAS WELL

⦿ ABANDONED OIL WELL

NOTE: Below make tracing from map, (when no map is obtainable make sketch) showing farm, center of section, this location with measurements and also wells, dry holes, or other locations in the vicinity of this location.



REMARKS:

SIGNED

Superintendent or Foreman.



Michigan Producing Division

Date 9/19/35 No. 120  
State Michigan County Ogemaw Dist. West Branch  
(Serial No.) Twp. 19 Sec. 22N Rge. 2E  
Well No. 1 (County No.) 120 Farm Edith Donovan Acres             
Operator W. J. Sovereign by             
Information secured            Scouting Dept.  
Date well started Not stated Date well completed Not completed Elevation           

# PRODUCTION RECORD

1st 24 hours natural LOCATION ABANDONED

2nd 24 hours natural

Date of shot No. of  
quarts From to From to

Date of acid No. of gallons

1st 24 hours after acid shot

2nd 24 hours after acid shot

FORMATION AND CASING RECORD

Formation	Top	Bottom	Top Pay	Bottom Pay	Remarks	Casing	
						Size	Set at
Location abandoned 9/18/35							

[illegible]

Signed S. H. Bell