



Western Michigan University  
ScholarWorks at WMU

---

Legacy Scout Tickets from Pure Oil Company

---

8-20-2021

MGRRE\_PureOilScoutTickets\_Crawford, W S & E  
H\_1\_21129022770000

MGRRE  
*Western Michigan University*

Follow this and additional works at: <https://scholarworks.wmich.edu/pure>



Part of the Geology Commons

---

#### WMU ScholarWorks Citation

MGRRE, "MGRRE\_PureOilScoutTickets\_Crawford, W S & E H\_1\_21129022770000" (2021). *Legacy Scout Tickets from Pure Oil Company*. 7850.  
<https://scholarworks.wmich.edu/pure/7850>

This Document is brought to you for free and open access via ScholarWorks at WMU. It has been accepted for inclusion in Legacy Scout Tickets from Pure Oil Company by an authorized administrator of ScholarWorks at WMU. See the National Digital Catalogue - Science Base Catalogue for more collections submitted by MGRRE.



---

MGRRE\_PureOilScoutTickets\_Crawford, W S & E H\_1\_21129022770000

API 21129022770000

Permit Number 2277

Lease Name Crawford, W S & E H

Well Number 1

County Ogemaw

Township 22N

Range 02E

Section 28

2021 DEQ or Pure co\_name Marathon Oil Company

Pure Number 155

Latitude 44.26489

Longitude -84.18878

DATE July 15, 1935

## LOCATION REPORT

No. 155

STATE Michigan COUNTY Ogemaw DIST. West Branch SEC. 28 TOWN. 22N RANGE 22E  
 WELL No. 1 (SERIAL No. 155) FARM W. S. & E. H. Crawford ACRES  
 NAME OF STREAM OR WATERS \_\_\_\_\_ QUADRANGLE NW-SE-SE  
 OPERATOR Weber Oil Co. Map West Branch Township, Ogemaw County

Feet from North Line of Farm

		East		
990	990	South		
330	330	West		

Feet from North Line of Section

990	990	East		$\frac{1}{4}$
990	990	South		$\frac{1}{4}$
		West		

## LEGEND

○ LOCATION

① RIG

⊕ DRILLING

☼ GAS WELL

● OIL WELL

⦿ SMALL OIL WELL

⊖ DRY HOLE

⦿ DRY SHOWING OIL

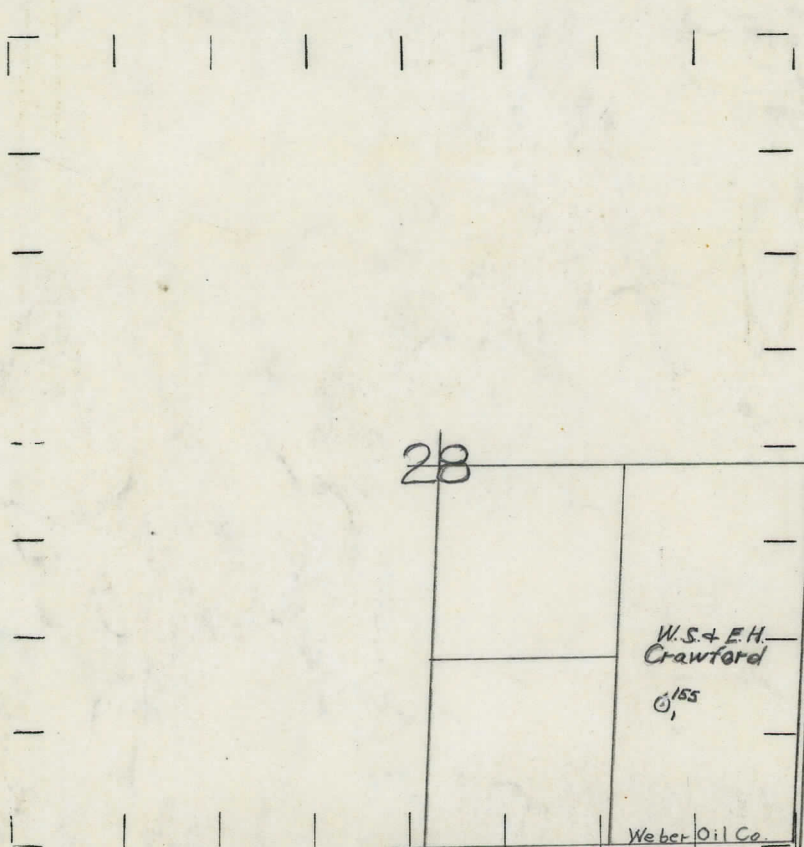
⊖ DRY SHOWING GAS

⊖ ABANDONED LOCATION

☼ ABANDONED GAS WELL

⦿ ABANDONED OIL WELL

NOTE: Below make tracing from map, (when no map is obtainable make sketch) showing farm, center of section, this location with measurements and also wells, dry holes, or other locations in the vicinity of this location.



REMARKS:

SIGNED

R. L. Yeager  
 Per. M. C. S. Superintendent or Foreman.



Michigan Producing Division

No. 155

Dist.

Twp. WestBranch

Sec. 28

Twp: 22N Rge. 2E

(Serial No.)

Well No. 1 (County No.) 155 Farm W. S. Crawford

Acres

Operator Weber Oil Company

Information secured from <sup>by</sup> ~~from~~ Scouting Department

Date well started 8/10/35

Date well completed 9/28/35

Elevation 933.6'

# PRODUCTION RECORD

1st 24 hours natural 30 bbls.

2nd 24 hours natural

[illegible]

Date of acid 9/29/35 No. of gallons 1000

shot  
1st 24 hours after acid 150 bbls.

2nd 24 hours after acid shot

# FORMATION AND CASING RECORD

[illegible]

Remarks ..... Show Oil & Gas and H.F.S. Water 1750'

Signed E. H. Bell