



Western Michigan University
ScholarWorks at WMU

Legacy Scout Tickets from Pure Oil Company

8-20-2021

MGRRE_PureOilScoutTickets_Country Club_1_21129026810000

MGRRE

Western Michigan University

Follow this and additional works at: <https://scholarworks.wmich.edu/pure>



Part of the Geology Commons

WMU ScholarWorks Citation

MGRRE, "MGRRE_PureOilScoutTickets_Country Club_1_21129026810000" (2021). *Legacy Scout Tickets from Pure Oil Company*. 7856.

<https://scholarworks.wmich.edu/pure/7856>

This Document is brought to you for free and open access via ScholarWorks at WMU. It has been accepted for inclusion in Legacy Scout Tickets from Pure Oil Company by an authorized administrator of ScholarWorks at WMU. See the National Digital Catalogue - Science Base Catalogue for more collections submitted by MGRRE.



MGRRE_PureOilScoutTickets_Country Club_1_21129026810000

API 21129026810000

Permit Number 2681

Lease Name Country Club

Well Number 1

County Ogemaw

Township 22N

Range 02E

Section 20

2021 DEQ or Pure co_name Marathon Oil Company

Pure Number 161

Latitude 44.27715

Longitude -84.22502

WELL REPORT - OUTSIDE OPERATIONS

SERIAL NO. 161 - 202STATE Michigan ~~Kalamazoo~~ CO. OgemawOPERATOR Henry SappingtonFARM Country Club WELL NO. 1-2TWP. West Branch S. 20 T. 22N R. 2E
~~SURVEY~~

LOC. _____

WILDCAT ☐ FIELD ☐ FIELD NAME _____

MAP NO. _____ CO-ORD. _____ ELEV. _____

STATUS _____

Operator's name corrected from:
Kinwell Oil Company

NORTH

DATE 1-18-54 SCOUT JEC

DATE 1-30-36 Correction LOCATION REPORT No. 161
 STATE Michigan COUNTY Ogemaw DIST. West Branch SEC. 20 TOWN 22 N RANGE 2 E
 WELL No. 1 (SERIAL No. 161) FARM Ogemaw Country Club ACRES 25
 NAME OF STREAM OR WATERS _____ QUADRANGLE SW SW SW

OPERATOR Kinwell Oil Company Map West Branch Township, Ogemaw County
W. Branch - Ogemaw

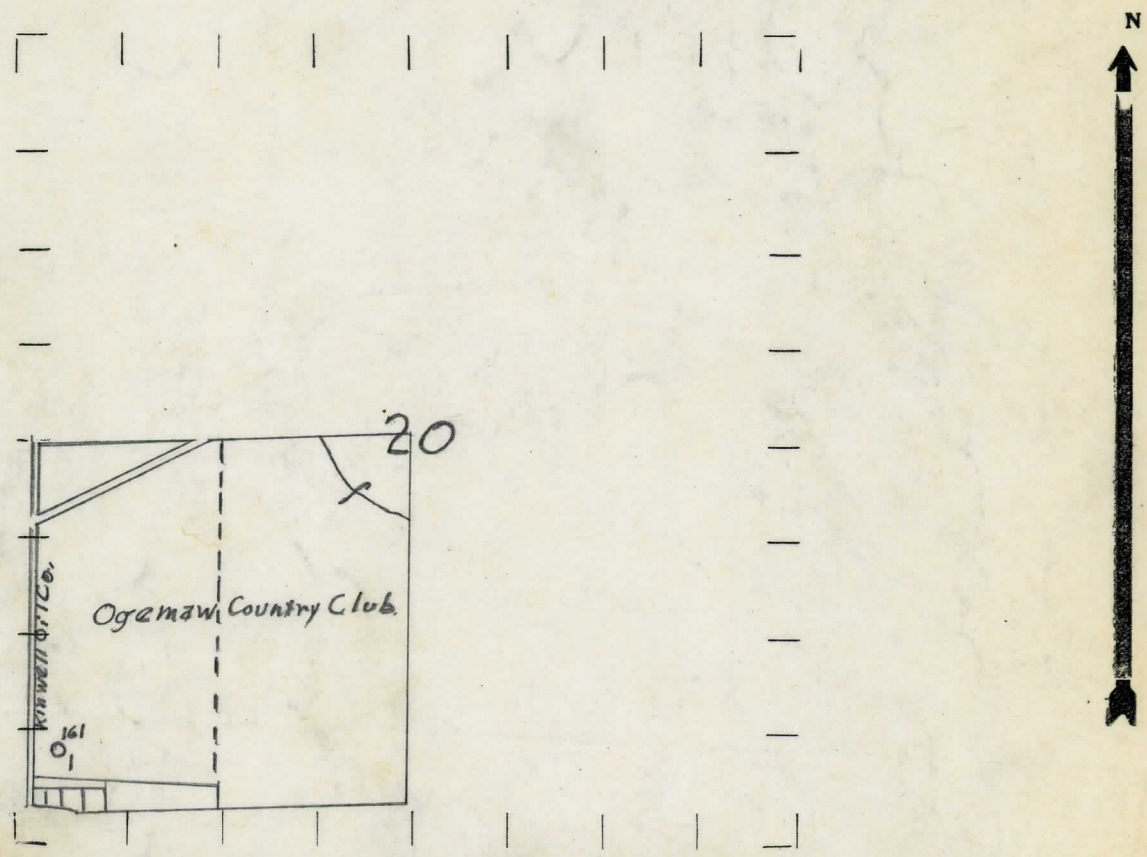
Feet from North Line of Farm
 " " East " " "
120 " " South " " "
200 " " West " " "

Feet from North Line of Section
 " " East " " "
407 " " South " " "
200 " " West " " "

LEGEND

- | | |
|------------------|----------------------|
| ○ LOCATION | ⊙ DRY HOLE |
| ① RIG | ⊕ DRY SHOWING OIL |
| ⊕ DRILLING | ⊙ DRY SHOWING GAS |
| ⊙ GAS WELL | ⊙ ABANDONED LOCATION |
| ● OIL WELL | ⊙ ABANDONED GAS WELL |
| ⊙ SMALL OIL WELL | ⊙ ABANDONED OIL WELL |

NOTE: Below make tracing from map, (when no map is obtainable make sketch) showing farm, center of section, this location with measurements and also wells, dry holes, or other locations in the vicinity of this location.



REMARKS: Change of Operator's name

SIGNED

R. L. Yeager

Superintendent or Foreman.

NAME OF ALBEAN OR ALBERS

QUADREANGLE

WELL No. 1 (SERIAL No. 161) FARM

VCBES

DATE 1-1-1911 STATE MI CTY Ogemaw COUNTY Ogemaw DIST. West Branch TWP. West Branch SEC. 20 TOWN 22N RANGE 2E

STATE Michigan COUNTY Ogemaw TWP. West Branch SEC. 20 TOWN 22N RANGE 2E

WELL No. 1 (SERIAL No. 161) FARM Country Club ACRES

NAME OF STREAM OR WATERS QUADRANGLE SW-SW-SW

OPERATOR Capitol Oil & Gas Company Map West Branch Township, Ogemaw County

Feet from North Line of Farm

" " East " " "

120 120 " " South " " "

200 200 " " West " " "

Feet from North Line of Section

" " East " " "

407 407 " " South " " "

200 200 " " West " " "

LEGEND

O LOCATION

① RIG

⊕ DRILLING

☀ GAS WELL

● OIL WELL

⦿ SMALL OIL WELL

⊙ DRY HOLE

⦿ DRY SHOWING OIL

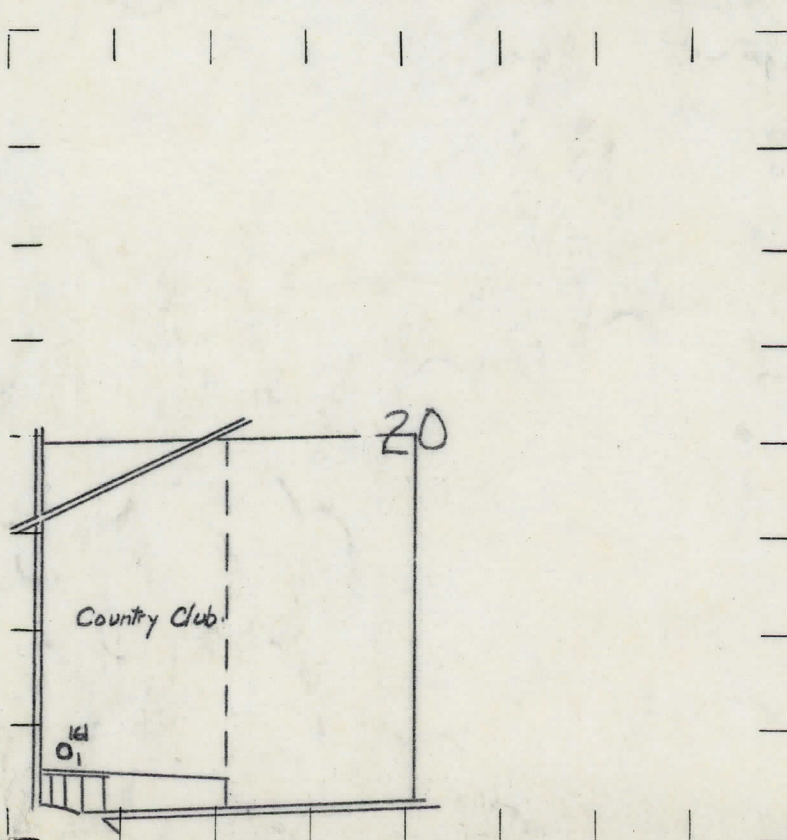
⊙ DRY SHOWING GAS

⊙ ABANDONED LOCATION

☀ ABANDONED GAS WELL

⦿ ABANDONED OIL WELL

NOTE: Below make tracing from map, (when no map is obtainable make sketch) showing farm, center of section, this location with measurements and also wells, dry holes, or other locations in the vicinity of this location.



REMARKS:

SIGNED

R. L. Yeager
Superintendent or Foreman.

DATE August 15, 1935

LOCATION REPORT

No. 161

STATE Michigan COUNTY Ogemaw DIST. West Branch TWP. West Branch SEC. 20 TOWN 22-N RANGE 2-E

WELL No. 1 (SERIAL No. 161) FARM Country Club ACRES

NAME OF STREAM OR WATERS QUADRANGLE SW-SW-SW

OPERATOR Oil & Gas Properties Trust Map West Branch Twp. Ogemaw County

Feet from North Line of Farm

120 120 East

200 200 South

200 200 West

Feet from North Line of Section

407 407 East

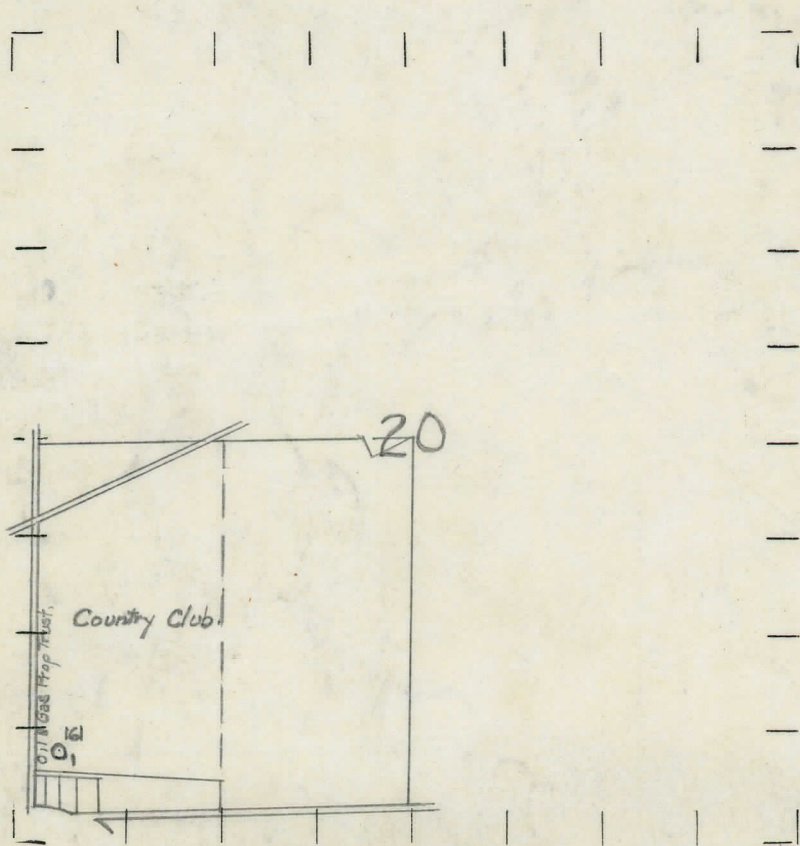
200 200 South

200 200 West

LEGEND

- LOCATION
- ⊙ RIG
- ⊕ DRILLING
- ☀ GAS WELL
- OIL WELL
- ⬮ SMALL OIL WELL
- ⊖ DRY HOLE
- ⬮ DRY SHOWING OIL
- ☀ DRY SHOWING GAS
- ⊖ ABANDONED LOCATION
- ☀ ABANDONED GAS WELL
- ⬮ ABANDONED OIL WELL

NOTE: Below make tracing from map, (when no map is obtainable make sketch) showing farm, center of section, this location with measurements and also wells, dry holes, or other locations in the vicinity of this location.



REMARKS:

SIGNED

R. L. Yeager

Superintendent or Foreman.

Per #2661

Michigan Producing Division

Date 10/31/35 No. 161
State Michigan County Ogemaw Dist. West Branch
(Serial No.) Twp. 20 Sec. 22 N Rge. 2 E
Well No. 1 (County No.) 161 Farm Country Club Acres
Operator Capital O & Gas Co. by
Information secured from Scouting Dept.
Date well started 8/22/35 Date well completed 10/12/35 Elevation 968.5

PRODUCTION RECORD

1st 24 hours natural **Filled up 1400'**

2nd 24 hours natural

[illegible]

Date of acid 10/18/35 No. of gallons 1000

shot
1st 24 hours after acid. Est. 50 bbls.

shot

2nd 24 hours after acid

FORMATION AND CASING RECORD

[illegible]

Remarks Show oil 1800-1810.

Signed W. H. Bell