



Western Michigan University
ScholarWorks at WMU

Legacy Scout Tickets from Pure Oil Company

8-20-2021

MGRRE_PureOilScoutTickets_Boeing Estate_1_21129027640000

MGRRE

Western Michigan University

Follow this and additional works at: <https://scholarworks.wmich.edu/pure>



Part of the Geology Commons

WMU ScholarWorks Citation

MGRRE, "MGRRE_PureOilScoutTickets_Boeing Estate_1_21129027640000" (2021). *Legacy Scout Tickets from Pure Oil Company*. 7867.

<https://scholarworks.wmich.edu/pure/7867>

This Document is brought to you for free and open access via ScholarWorks at WMU. It has been accepted for inclusion in Legacy Scout Tickets from Pure Oil Company by an authorized administrator of ScholarWorks at WMU. See the National Digital Catalogue - Science Base Catalogue for more collections submitted by MGRRE.



MGRRE_PureOilScoutTickets_Boeing Estate_1_21129027640000

API 21129027640000

Permit Number 2764

Lease Name Boeing Estate

Well Number 1

County Ogemaw

Township 22N

Range 02E

Section 36

2021 DEQ or Pure co_name Marathon Oil Company

Pure Number 172

Latitude 44.25081

Longitude -84.13186

WELL REPORT - OUTSIDE OPERATIONS

SERIAL NO.

TH 172

STATE

Michigan

PSHX
CO.

Ogemaw

OPERATOR

Ohio Oil Company

FARM

Boeing Estate

WELL NO.

1

TWP.

~~SURVEY~~

West Branch

S.

36

T.

22N

R.

2E

LOC.

NE SW SE

WILDCAT ☐ FIELD ☐ FIELD NAME

MAP NO.

CO-ORD.

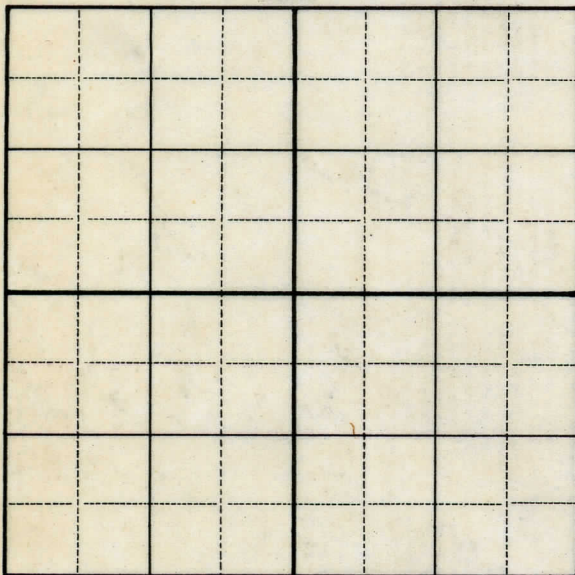
ELEV.

STATUS

Total Depth 2617'.

Plugged and abandoned 4-30-49.

NORTH



DATE

6/1/49

SCOUT

H. J. G.

DATE 9/19/35 LOCATION REPORT No. 172

STATE Michigan COUNTY Ogemaw DIST. West Branch SEC. 36 TOWN 22N RANGE 2E

WELL No. 1 (SERIAL No. 172) FARM Boeing Estate ACRES

NAME OF STREAM OR WATERS QUADRANGLE NE-SW-SE

OPERATOR Weber Oil Company Ohio O. I. Company Map West Branch Township, Ogemaw County

330 330 Feet from North Line of Farm

330 330 " " East " " "

" " South " " "

" " West " " "

Feet from North Line of Section

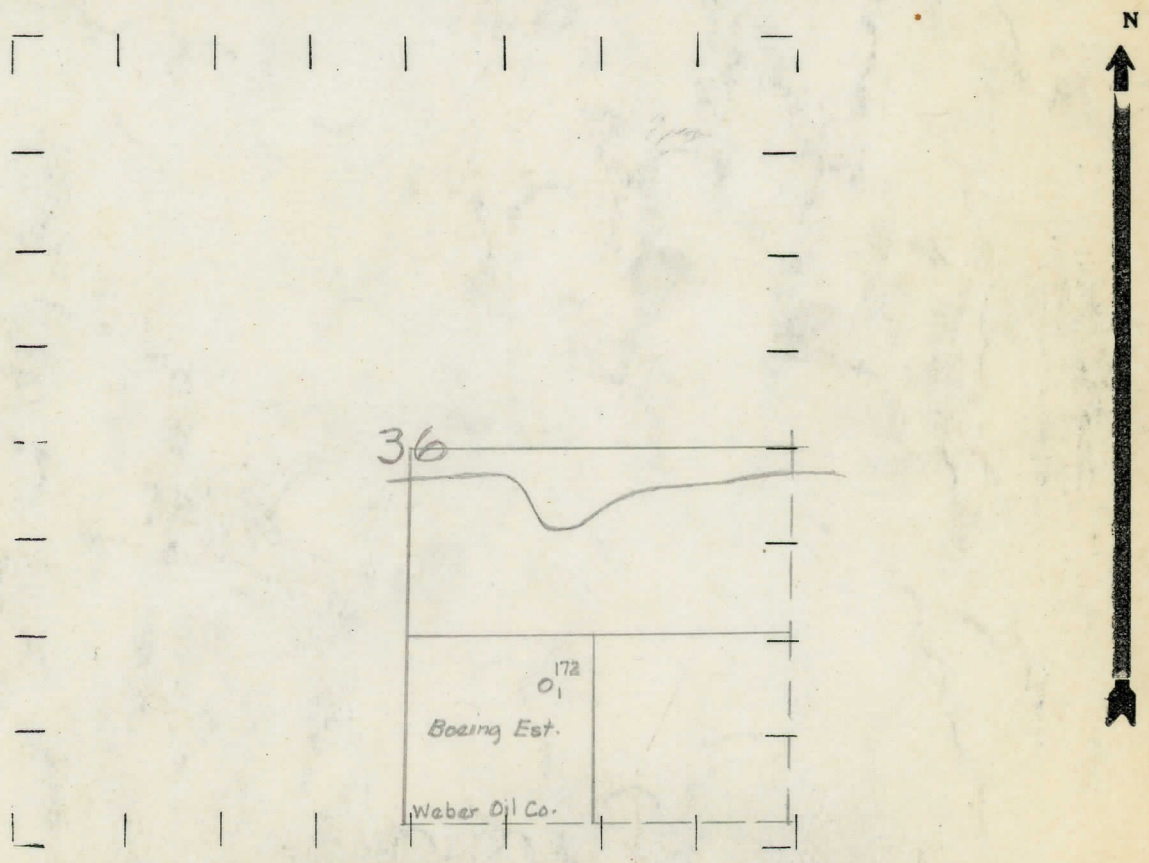
" " East " " "

990 990 " " South " " "

990 990 " " West " " $\frac{1}{4}$ "

- LEGEND**
- LOCATION
 - ① RIG
 - ⊕ DRILLING
 - ☀ GAS WELL
 - OIL WELL
 - ⬤ SMALL OIL WELL
 - ⊖ DRY HOLE
 - ⬤ DRY SHOWING OIL
 - ☀ DRY SHOWING GAS
 - ⊖ ABANDONED LOCATION
 - ☀ ABANDONED GAS WELL
 - ⬤ ABANDONED OIL WELL

NOTE: Below make tracing from map, (when no map is obtainable make sketch) showing farm, center of section, this location with measurements and also wells, dry holes, or other locations in the vicinity of this location.



REMARKS:

SIGNED R. J. Yager
Superintendent or Foreman.

Michigan Producing Division

PRODUCTION RECORD

2nd 24 hours after acid

FORMATION AND CASING RECORD

[illegible]

Remarks

Signed _____ Geo. H. Bell