



Western Michigan University
ScholarWorks at WMU

Legacy Scout Tickets from Pure Oil Company

8-20-2021

**MGRRE_PureOilScoutTickets_Dery,fowler, &
Wobig_2_21129029150000**

MGRRE
Western Michigan University

Follow this and additional works at: <https://scholarworks.wmich.edu/pure>



Part of the Geology Commons

WMU ScholarWorks Citation

MGRRE, "MGRRE_PureOilScoutTickets_Dery,fowler, & Wobig_2_21129029150000" (2021). *Legacy Scout Tickets from Pure Oil Company*. 7885.
<https://scholarworks.wmich.edu/pure/7885>

This Document is brought to you for free and open access via ScholarWorks at WMU. It has been accepted for inclusion in Legacy Scout Tickets from Pure Oil Company by an authorized administrator of ScholarWorks at WMU. See the National Digital Catalogue - Science Base Catalogue for more collections submitted by MGRRE.



MGRRE_PureOilScoutTickets_Dery,fowler, & Wobig_2_21129029150000

API 21129029150000

Permit Number 2915

Lease Name Dery,fowler, & Wobig

Well Number 2

County Ogemaw

Township 21N

Range 03E

Section 6

2021 DEQ or Pure co_name Dery, Louis and Fowler, O. S.

Pure Number 190

Latitude 44.24537

Longitude -84.11409

THE PURE OIL COMPANY

DATE 2-2-38

LOCATION REPORT

No. 190STATE Michigan COUNTY OgemawDIST. Mills
TWP. MillsSEC. 6TOWN 21-N RANGE 3-EWELL No. 2 (SERIAL No. 190) FARMPREC. Wobig Heirs

ACRES

NAME OF STREAM OR WATERS

QUADRANGLE SW-NW-NEOPERATOR Derby & FowlerMap Mills Twp., Ogemaw Co.Derby & FowlerMills-Oge

Feet from North Line of Farm

" " East " " "

" " South " " "

" " West " " "

Feet from North Line of Section

" " East " " "

" " South " " "

" " West " " "

LEGEND

○ LOCATION

① RIG

⊕ DRILLING

☼ GAS WELL

● OIL WELL

⦿ SMALL OIL WELL

⊙ DRY HOLE

⦿ DRY SHOWING OIL

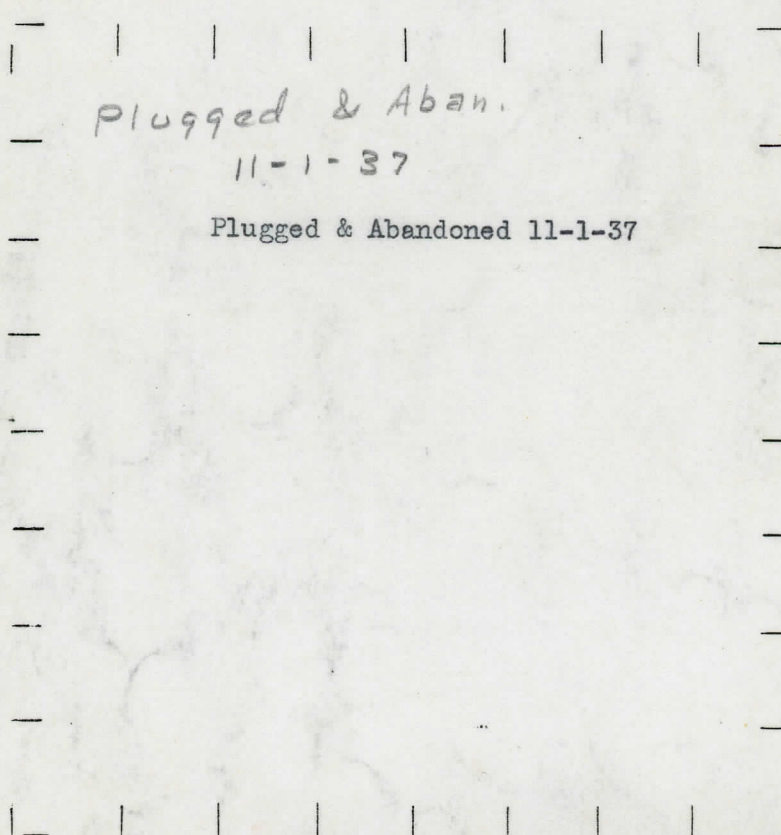
⊙ DRY SHOWING GAS

⦿ ABANDONED LOCATION

☼ ABANDONED GAS WELL

⦿ ABANDONED OIL WELL

NOTE: Below make tracing from map, (when no map is obtainable make sketch) showing farm, center of section, this location with measurements and also wells, dry holes, or other locations in the vicinity of this location.



REMARKS:

SIGNED

R. L. Yenga
 Superintendent or Foreman.

DVLE 8-8-38

LOCATION REPORT

DATE November 21, 1935

LOCATION REPORT

No. 190

STATE Michigan COUNTY Ogemaw DIST. Mills TWP. Mills SEC. 6 TOWN 21N RANGE 3E

WELL No. 2 (SERIAL No. 190) FARM Dery-Fowler-Wobig ACRES

NAME OF STREAM OR WATERS QUADRANGLE SW-NW-NE, SW-NW-NE

OPERATOR Louis Dery & O. S. Fowler Map Mills Township, Ogemaw County

Feet from North Line of Farm

330 330 East

330 330 South

330 330 West

990 990 Feet from North Line of Section

East

South

330 330 West

LEGEND

O LOCATION

① RIG

⊕ DRILLING

☀ GAS WELL

● OIL WELL

⬮ SMALL OIL WELL

⊙ DRY HOLE

⬮ DRY SHOWING OIL

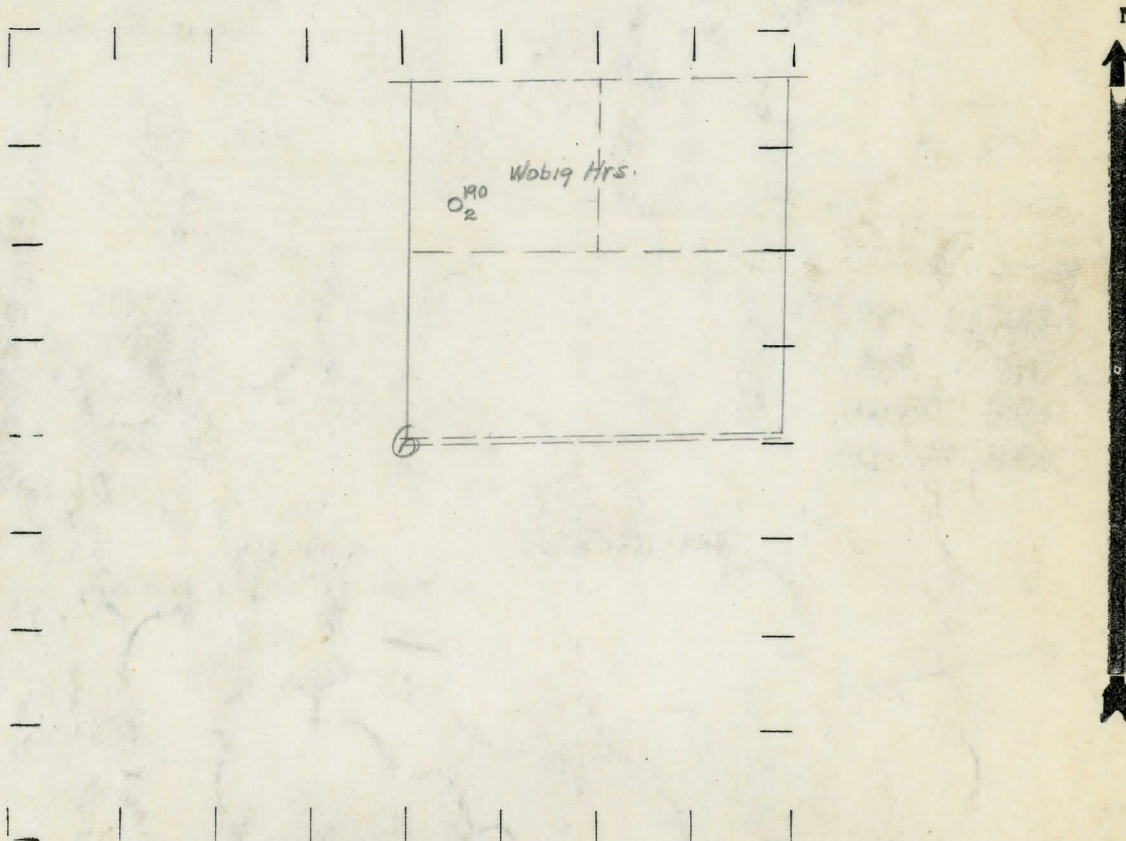
⊙ DRY SHOWING GAS

⊙ ABANDONED LOCATION

☀ ABANDONED GAS WELL

⬮ ABANDONED OIL WELL

NOTE: Below make tracing from map, (when no map is obtainable make sketch) showing farm, center of section, this location with measurements and also wells, dry holes, or other locations in the vicinity of this location.



REMARKS:

SIGNED

R. L. Yeager

Superintendent or Foreman.

