



Western Michigan University
ScholarWorks at WMU

Legacy Scout Tickets from Pure Oil Company

8-20-2021

MGRRE_PureOilScoutTickets_Boeing Estate_3_21129030550000

MGRRE

Western Michigan University

Follow this and additional works at: <https://scholarworks.wmich.edu/pure>



Part of the Geology Commons

WMU ScholarWorks Citation

MGRRE, "MGRRE_PureOilScoutTickets_Boeing Estate_3_21129030550000" (2021). *Legacy Scout Tickets from Pure Oil Company*. 7896.

<https://scholarworks.wmich.edu/pure/7896>

This Document is brought to you for free and open access via ScholarWorks at WMU. It has been accepted for inclusion in Legacy Scout Tickets from Pure Oil Company by an authorized administrator of ScholarWorks at WMU. See the National Digital Catalogue - Science Base Catalogue for more collections submitted by MGRRE.



MGRRE_PureOilScoutTickets_Boeing Estate_3_21129030550000

API 21129030550000

Permit Number 3055

Lease Name Boeing Estate

Well Number 3

County Ogemaw

Township 22N

Range 02E

Section 36

2021 DEQ or Pure co_name Marathon Oil Company

Pure Number 201

Latitude 44.249

Longitude -84.13437

WELL REPORT - OUTSIDE OPERATIONS

Form 21-6M-12-4-34-P100-Poco

SERIAL NO. 201

STATE Michigan PSH Ogemaw
 CO. CO.

OPERATOR Ohio Oil Company

FARM Boeing Estate WELL NO. 3

TWP. West Branch S. 36 T. 22N R. 2E
 SURVEY

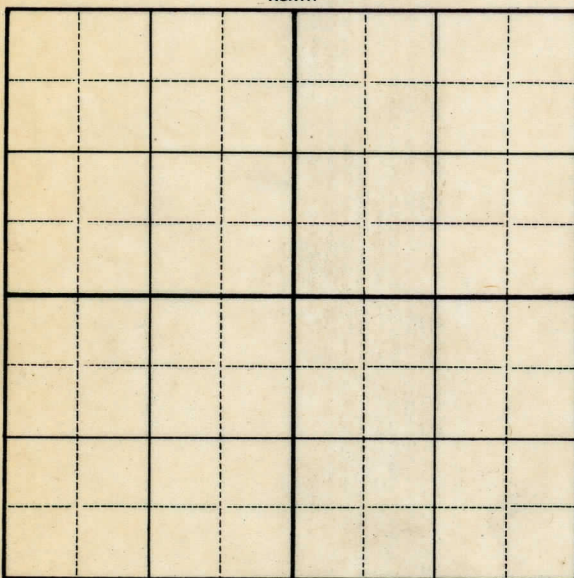
LOC. SW SW SE

WILDCAT ☐ FIELD ☐ FIELD NAME _____

MAP NO. _____ CO-ORD. _____ ELEV. _____

STATUS Total Depth 2634'.Plugged and abandoned 4-26-49.

NORTH

DATE 6/1/49 SCOUT H. J. G.

CIVIL

OPTO OIL COMPANY

CO

Company

COMPLETION PERIOD NO. THE OIL COMPANY OTHER OPERATORS

DATE 1-23-36

LOCATION REPORT

No. 201

STATE Michigan COUNTY Ogemaw DIST. West Branch. 36 22-N 2-E
TWP. West Branch SEC. 36 TOWN 22 N RANGE 2 E
WELL No. 33 (SERIAL No. 201) FARM Boeing Est. ACRES

NAME OF STREAM OR WATERS QUADRANGLE SW-SW-SE

OPERATOR Weber Oil Co. Ohio Oil Company Map Ogemaw Co. - West Branch Twp.
Weber Oil Co. Ogemaw-West Br.

Feet from North Line of Farm

330 330 East " " "
330 330 South " " "
330 330 West " " "

Feet from North Line of Section

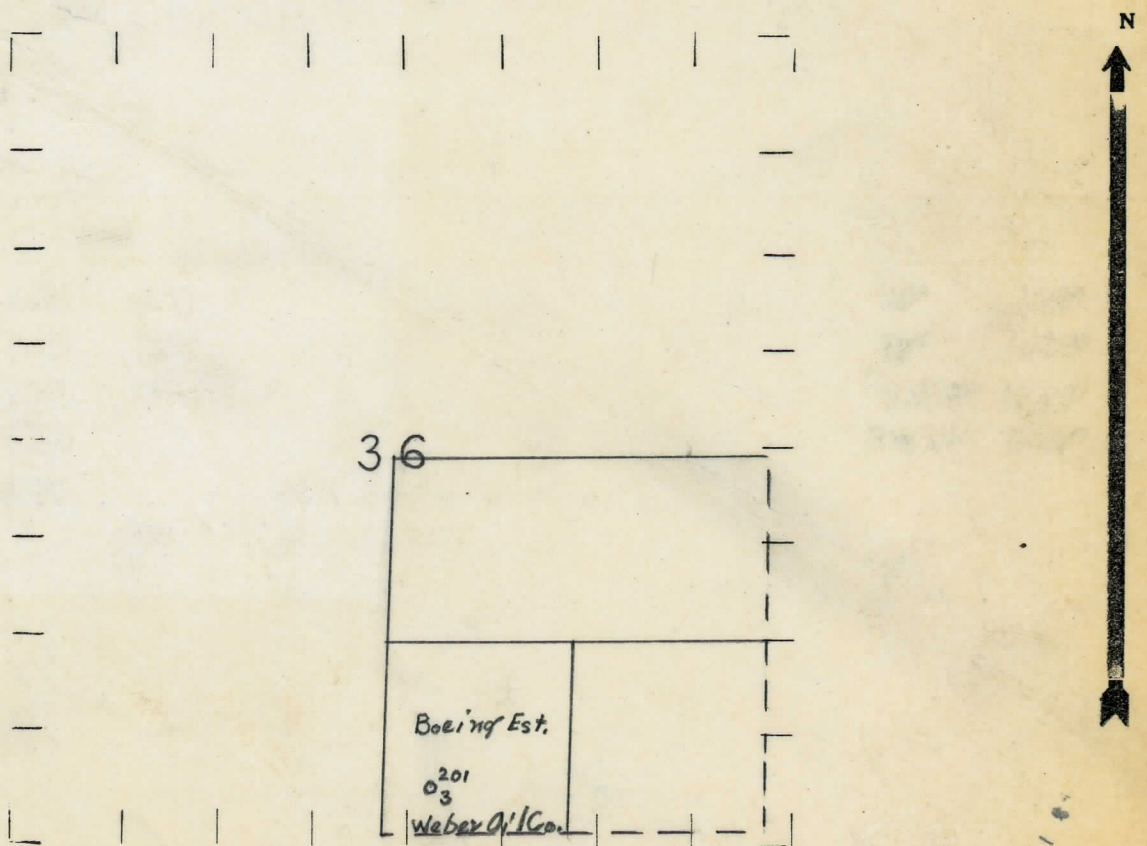
330 330 East " " "
330 330 South " " "
330 330 West " " "

550-156
10" D.P.
8 1/4" = 450

LEGEND

- LOCATION
- ⊕ RIG
- ⊕ DRILLING
- ☀ GAS WELL
- OIL WELL
- SMALL OIL WELL
- ⊖ DRY HOLE
- ⊕ DRY SHOWING OIL
- ⊖ DRY SHOWING GAS
- ⊖ ABANDONED LOCATION
- ☀ ABANDONED GAS WELL
- ABANDONED OIL WELL

NOTE: Below make tracing from map, (when no map is obtainable make sketch) showing farm, center of section, this location with measurements and also wells, dry holes, or other locations in the vicinity of this location.



REMARKS:

SIGNED

R. A. Yeager

Superintendent or Foreman.

Signed