



Western Michigan University
ScholarWorks at WMU

Legacy Scout Tickets from Pure Oil Company

8-20-2021

**MGRRE_PureOilScoutTickets_Crawford, W S & E
H_2_21129031200000**

MGRRE
Western Michigan University

Follow this and additional works at: <https://scholarworks.wmich.edu/pure>



Part of the Geology Commons

WMU ScholarWorks Citation

MGRRE, "MGRRE_PureOilScoutTickets_Crawford, W S & E H_2_21129031200000" (2021). *Legacy Scout Tickets from Pure Oil Company*. 7905.
<https://scholarworks.wmich.edu/pure/7905>

This Document is brought to you for free and open access via ScholarWorks at WMU. It has been accepted for inclusion in Legacy Scout Tickets from Pure Oil Company by an authorized administrator of ScholarWorks at WMU. See the National Digital Catalogue - Science Base Catalogue for more collections submitted by MGRRE.



MGRRE_PureOilScoutTickets_Crawford, W S & E H_2_21129031200000

API 21129031200000

Permit Number 3120

Lease Name Crawford, W S & E H

Well Number 2

County Ogemaw

Township 22N

Range 02E

Section 28

2021 DEQ or Pure co_name Marathon Oil Company

Pure Number 210

Latitude 44.26686

Longitude -84.18872

DATE March 19, 1936

LOCATION REPORT

No. 210
32 N
22 N 25 E

STATE Michigan COUNTY Ogemaw DIST. West Branch SEC. 28 TOWN 22 N RANGE 25 E

WELL No. 2 (SERIAL No. 210) FARM W. S. & E. H. Crawford ACRES 56

NAME OF STREAM OR WATERS _____ QUADRANGLE SW NE SE

OPERATOR Weber Oil Company Map West Branch Township, Ogemaw County

990 990 Feet from North Line of Farm

" " East " " "

" " South " " "

330 330 " " West " " "

990 990 Feet from North Line of Section 1/4

990 990 " " East " " "

" " South " " "

" " West " " "

LEGEND

○ LOCATION

⊙ RIG

⊕ DRILLING

☼ GAS WELL

● OIL WELL

⬮ SMALL OIL WELL

⊙ DRY HOLE

⬮ DRY SHOWING OIL

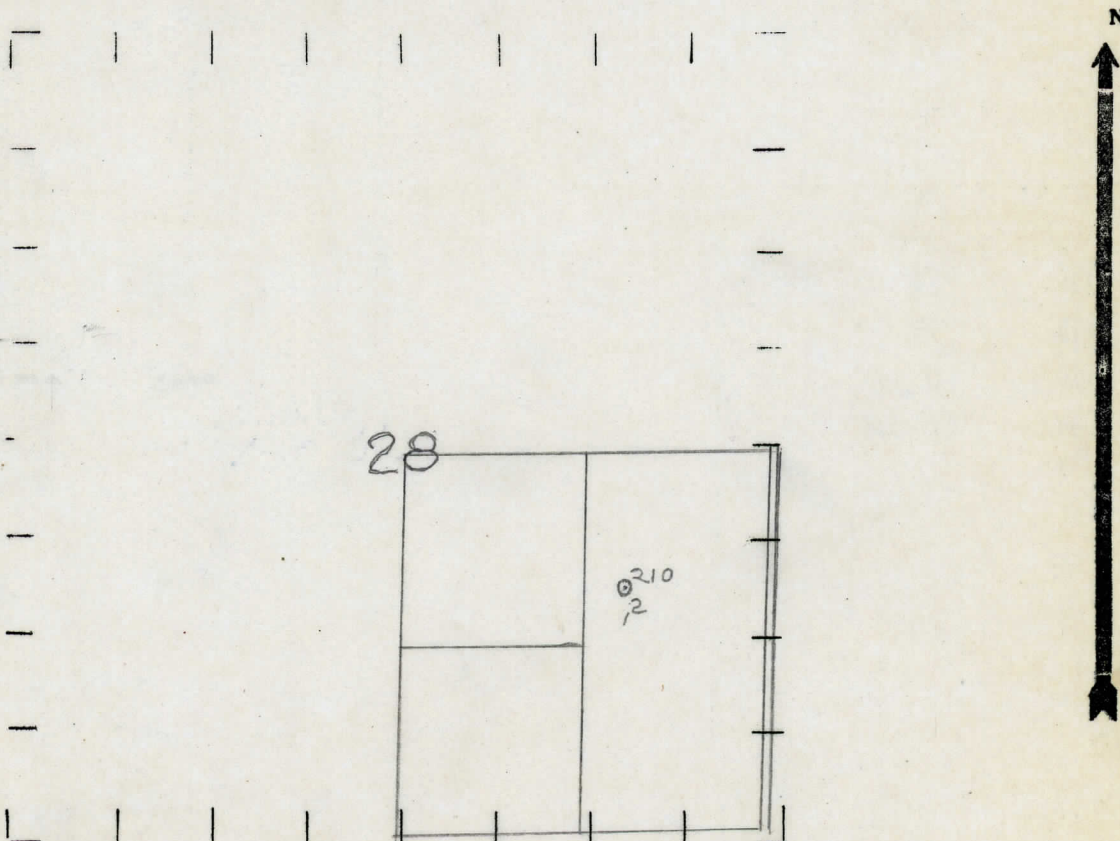
⬮ DRY SHOWING GAS

⊙ ABANDONED LOCATION

☼ ABANDONED GAS WELL

⬮ ABANDONED OIL WELL

NOTE: Below make tracing from map, (when no map is obtainable make sketch) showing farm, center of section, this location with measurements and also wells, dry holes, or other locations in the vicinity of this location.



REMARKS:

SIGNED

R. L. Yeager

Superintendent or Foreman.

Signed