



Western Michigan University
ScholarWorks at WMU

Legacy Scout Tickets from Pure Oil Company

8-20-2021

MGRRE_PureOilScoutTickets_Crow Evan_3_21129032360000

MGRRE

Western Michigan University

Follow this and additional works at: <https://scholarworks.wmich.edu/pure>



Part of the Geology Commons

WMU ScholarWorks Citation

MGRRE, "MGRRE_PureOilScoutTickets_Crow Evan_3_21129032360000" (2021). *Legacy Scout Tickets from Pure Oil Company*. 7916.

<https://scholarworks.wmich.edu/pure/7916>

This Document is brought to you for free and open access via ScholarWorks at WMU. It has been accepted for inclusion in Legacy Scout Tickets from Pure Oil Company by an authorized administrator of ScholarWorks at WMU. See the National Digital Catalogue - Science Base Catalogue for more collections submitted by MGRRE.



MGRRE_PureOilScoutTickets_Crow Evan_3_21129032360000

API 21129032360000

Permit Number 3236

Lease Name Crow Evan

Well Number 3

County Ogemaw

Township 22N

Range 02E

Section 36

2021 DEQ or Pure co_name Summit Essexville, Incorporated

Pure Number 221

Latitude 44.2564117

Longitude -84.1344433

DATE May 7, 1936

LOCATION REPORT

No. 221

STATE Michigan COUNTY Ogemaw DIST. West Branch SEC. 36 TOWN 22 N RANGE 2 E
 WELL No. 3 (SERIAL No. 221) FARM Evan Crow ACRES

NAME OF STREAM OR WATERS

QUADRANGLE SW SW NE

OPERATOR Consolidated Petroleum Producers, Inc. Map West Branch Township, Ogemaw County
Consolidated Pet. Prod. Inc. Wolverine West Branch - Oge. Co.

Feet from North Line of Farm Oil Co. 3-18-52

330 330 " " East " " "
 330 330 " " South " " "
 330 330 " " West " " "

Feet from North Line of Section

330 330 " " East " " "
 330 330 " " South " 1/4 "
 330 330 " " West " 1/4 "

LEGEND

O LOCATION

① RIG

⊕ DRILLING

⊗ GAS WELL

● OIL WELL

⦿ SMALL OIL WELL

⊙ DRY HOLE

⦿ DRY SHOWING OIL

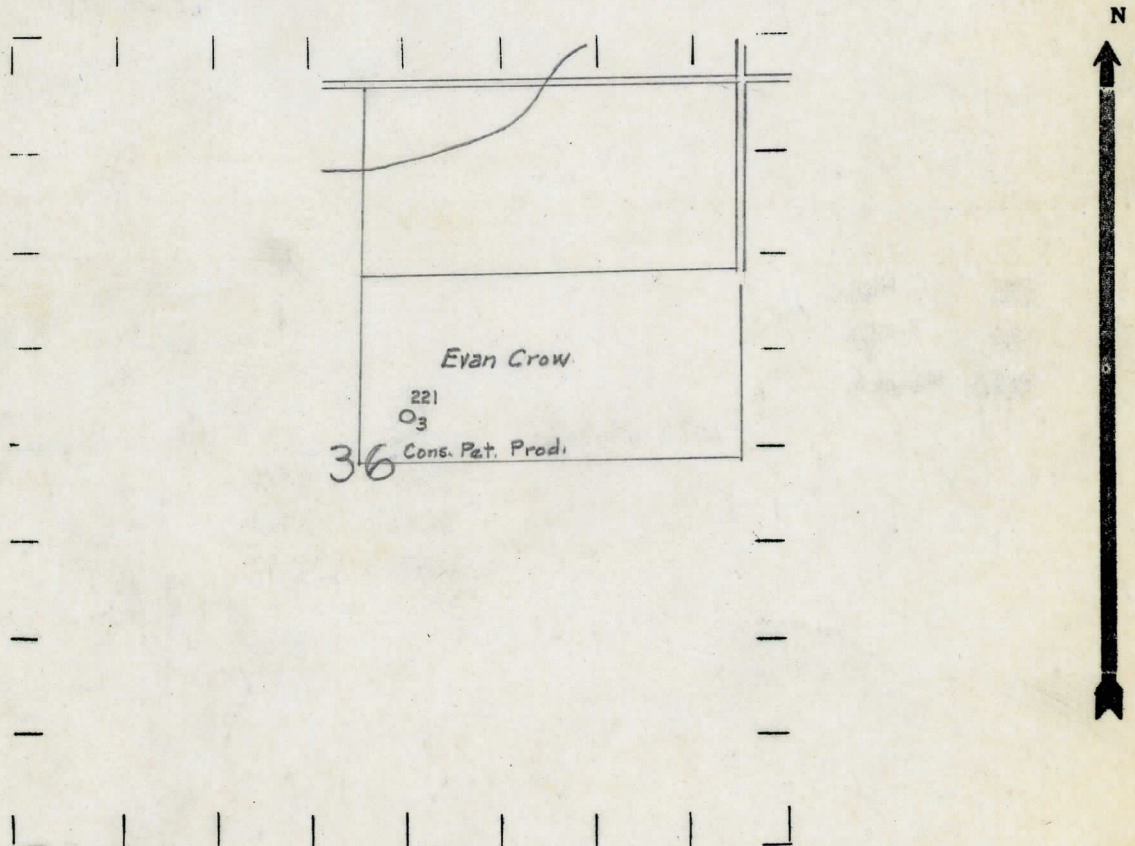
⦿ DRY SHOWING GAS

⦿ ABANDONED LOCATION

⦿ ABANDONED GAS WELL

⦿ ABANDONED OIL WELL

NOTE: Below make tracing from map, (when no map is obtainable make sketch) showing farm, center of section, this location with measurements and also wells, dry holes, or other locations in the vicinity of this location.



REMARKS:

SIGNED

R. L. Yeager
 Superintendent or Foreman.

DIVISION

PRODUCTION RECORD

FORMATION AND CASING RECORD

Remarks **Show oil 2065.**

Signed