



Western Michigan University
ScholarWorks at WMU

Legacy Scout Tickets from Pure Oil Company

8-20-2021

MGRRE_PureOilScoutTickets_Crow Evan_4_21129032660000

MGRRE

Western Michigan University

Follow this and additional works at: <https://scholarworks.wmich.edu/pure>



Part of the Geology Commons

WMU ScholarWorks Citation

MGRRE, "MGRRE_PureOilScoutTickets_Crow Evan_4_21129032660000" (2021). *Legacy Scout Tickets from Pure Oil Company*. 7919.

<https://scholarworks.wmich.edu/pure/7919>

This Document is brought to you for free and open access via ScholarWorks at WMU. It has been accepted for inclusion in Legacy Scout Tickets from Pure Oil Company by an authorized administrator of ScholarWorks at WMU. See the National Digital Catalogue - Science Base Catalogue for more collections submitted by MGRRE.



MGRRE_PureOilScoutTickets_Crow Evan_4_21129032660000

API 21129032660000

Permit Number 3266

Lease Name Crow Evan

Well Number 4

County Ogemaw

Township 22N

Range 02E

Section 36

2021 DEQ or Pure co_name Summit Essexville, Incorporated

Pure Number 224

Latitude 44.2547068

Longitude -84.1369341

COMPLETION RECORD THE PURE OIL COMPANY

DATE May 21, 1936

LOCATION REPORT

No. 224

STATE Michigan COUNTY Ogemaw DIST. West Branch SEC. 36 TOWN 22 N RANGE 22 E
 WELL No. 44 (SERIAL No. 224) FARM Evan Crow ACRES

NAME OF STREAM OR WATERS

QUADRANGLE NE NE SWOPERATOR New Consolidated Petroleum Corp. - 9-1-13 Map West Branch Township, Ogemaw County

330 330 Feet from North Line of Farm Oil Co. 3-18-52
330 330 " " East " " "

330 330 " " South " " "

330 330 " " West " " "

330 330 Feet from North Line of Section 3/4

330 330 " " East " " 1/4

330 330 " " South " " "

330 330 " " West " " "

LEGEND

O LOCATION

① RIG

⊕ DRILLING

☼ GAS WELL

● OIL WELL

● SMALL OIL WELL

⊙ DRY HOLE

⊙ DRY SHOWING OIL

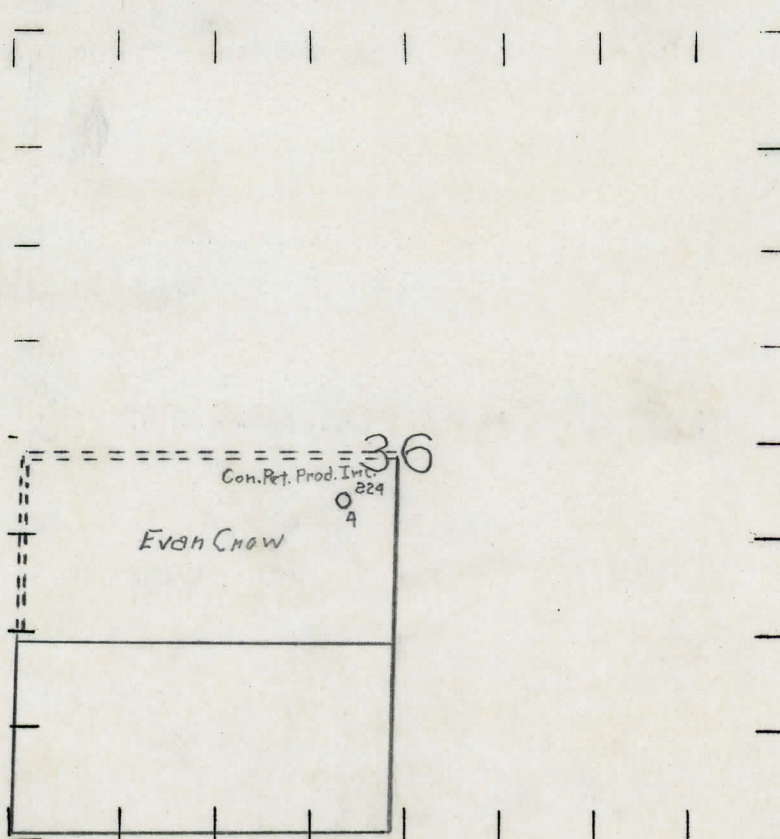
⊙ DRY SHOWING GAS

⊙ ABANDONED LOCATION

☼ ABANDONED GAS WELL

● ABANDONED OIL WELL

NOTE: Below make tracing from map, (when no map is obtainable make sketch) showing farm, center of section, this location with measurements and also wells, dry holes, or other locations in the vicinity of this location.



REMARKS:

SIGNED

R. L. Yeager.
 Superintendent or Foreman.

Michigan Producing Division

Date: July 9, 1936 No. 224
State Michigan County Ogemaw Twp. West Branch Sec. 36 Twp. 22 N Rge. 2 E
Well No. 4 (Serial No.)
(County No.) 224 Farm Evan Crow Acres
Operator Consolidated Petroleum Producers, Inc. by
Information secured from Scouting Dept.
Date well started 5-18-36 Date well completed 6-27-36 Elevation 848.0

PRODUCTION RECORD

1st 24 hours natural **Filled up 1000'**

2nd 24 hours natural

Date of shot _____ No. of quarts _____ From _____ to _____ From _____ to _____

Date of acid **6-29-36** No. of gallons **1000**

~~shot~~
1st 24 hours after acid **140 Bbls.**

~~shot~~
2nd 24 hours after acid **60 "**

FORMATION AND CASING RECORD

[illegible]

Remarks Oil, gas, water 1685 - show oil 2085 - show oil 2473 - water 2602-2627.

Signed