



Western Michigan University  
ScholarWorks at WMU

---

Legacy Scout Tickets from Pure Oil Company

---

8-20-2021

**MGRRE\_PureOilScoutTickets\_Fisk Mary\_2\_21129034090000**

MGRRE

*Western Michigan University*

Follow this and additional works at: <https://scholarworks.wmich.edu/pure>



Part of the Geology Commons

---

#### WMU ScholarWorks Citation

MGRRE, "MGRRE\_PureOilScoutTickets\_Fisk Mary\_2\_21129034090000" (2021). *Legacy Scout Tickets from Pure Oil Company*. 7930.

<https://scholarworks.wmich.edu/pure/7930>

This Document is brought to you for free and open access via ScholarWorks at WMU. It has been accepted for inclusion in Legacy Scout Tickets from Pure Oil Company by an authorized administrator of ScholarWorks at WMU. See the National Digital Catalogue - Science Base Catalogue for more collections submitted by MGRRE.



---

**MGRRE\_PureOilScoutTickets\_Fisk Mary\_2\_21129034090000**

API 21129034090000

Permit Number 3409

Lease Name Fisk Mary

Well Number 2

County Ogemaw

Township 22N

Range 02E

Section 27

2021 DEQ or Pure co\_name Muskegon Development Company

Pure Number 235

Latitude 44.2667675

Longitude -84.1836917

The Pure Oil Company  
THE PURE OIL COMPANY

DATE July 16, 1936

LOCATION REPORT

No. 235

STATE Michigan COUNTY Ogemaw DIST. West Branch SEC. 227 TOWN 22 N RANGE 25 E  
WELL No. 22 (SERIAL No. 235) FARM Mary Fisk ACRES

NAME OF STREAM OR WATERS QUADRANGLE SW-NW-SW  
SW NW SW

OPERATOR Weber Oil Company Map West Branch Township, Ogemaw County  
330330 Weber Oil Co. West Branch-Ogemaw  
Feet from North Line of Farm

\_\_\_\_\_ " " East " " "  
\_\_\_\_\_ " " South " " "  
330330 " " West " " "  
990990 Feet from North Line of Section 2 1/4  
\_\_\_\_\_ " " East " " "  
\_\_\_\_\_ " " South " " "  
330330 " " West " " "

LEGEND

○ LOCATION

① RIG

⊕ DRILLING

☼ GAS WELL

● OIL WELL

⬮ SMALL OIL WELL

⊙ DRY HOLE

⬮ DRY SHOWING OIL

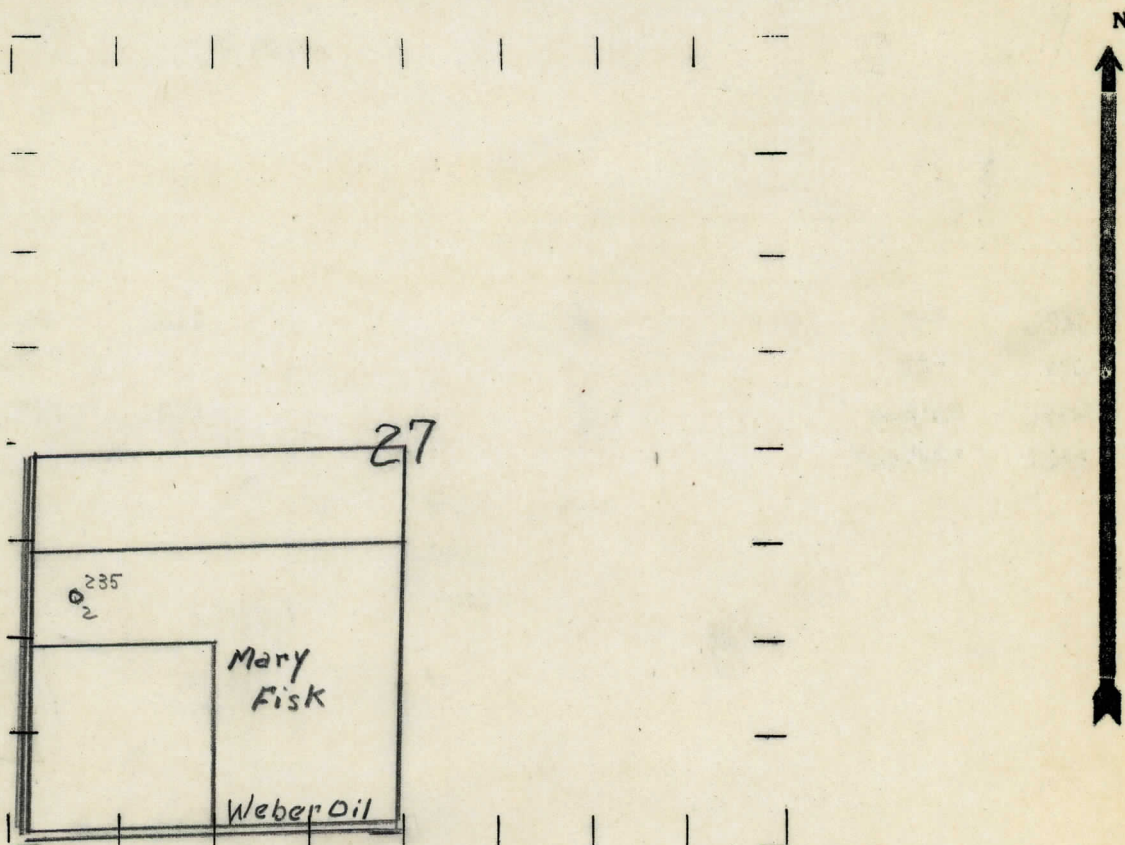
⊙ DRY SHOWING GAS

⊙ ABANDONED LOCATION

☼ ABANDONED GAS WELL

⬮ ABANDONED OIL WELL

NOTE: Below make tracing from map, (when no map is obtainable make sketch) showing farm, center of section, this location with measurements and also wells, dry holes, or other locations in the vicinity of this location.



REMARKS:

SIGNED

Superintendent or Foreman.



Michigan Producing Division

Date **October 8, 1936**

No. 235

State Michigan County Ogemaw

Dist.

Twp. West Branch

Sec. 27

TWO 22 N

Reg. 2 E

(Serial No.)

Well No. **2** (County No.) **235**

Farm      Mark Fisk

Acres

Operator Weber Oil Company

Information secured ~~from~~ <sup>by</sup> Scouting Department

Date well started 8-21-36

Date well completed **9-28-36**

Elevation 942.5

# PRODUCTION RECORD

1st 24 hours natural 20 Bbls.

2nd 24 hours natural

[illegible]

Date of acid **10-3-36** No. of gallons **1000**

1st 24 hours after ~~shot~~ acid 285 Bbls.

shot

2nd 24 hours after acid

## FORMATION AND CASING RECORD

[illegible]

Remarks Show oil, gas, and water 1764.

Signed