



Western Michigan University
ScholarWorks at WMU

Legacy Scout Tickets from Pure Oil Company

8-20-2021

**MGRRE_PureOilScoutTickets_Blakley, Cortland J. &
Margaret_1_21129023210000**

MGRRE
Western Michigan University

Follow this and additional works at: <https://scholarworks.wmich.edu/pure>



Part of the Geology Commons

WMU ScholarWorks Citation

MGRRE, "MGRRE_PureOilScoutTickets_Blakley, Cortland J. & Margaret_1_21129023210000" (2021).
Legacy Scout Tickets from Pure Oil Company. 7937.
<https://scholarworks.wmich.edu/pure/7937>

This Document is brought to you for free and open access via ScholarWorks at WMU. It has been accepted for inclusion in Legacy Scout Tickets from Pure Oil Company by an authorized administrator of ScholarWorks at WMU. See the National Digital Catalogue - Science Base Catalogue for more collections submitted by MGRRE.



**MGRRE_PureOilScoutTickets_Blakley, Cortland J. &
Margaret_1_21129023210000**

API 21129023210000

Permit Number 2321

Lease Name Blakley, Cortland J. & Margaret

Well Number 1

County Ogemaw

Township 22N

Range 02E

Section 19

2021 DEQ or Pure co_name Marathon Oil Company

Pure Number 242

Latitude 44.28225

Longitude -84.23935

DATE July 23, 1936

LOCATION REPORT

No. 242

STATE Michigan COUNTY Ogemaw DIST. West Branch TWP. West Branch SEC. 19 TOWN 22 N RANGE 22 E

WELL No. 11 (SERIAL No. 242) FARM C. J. Blakeley ACRES

NAME OF STREAM OR WATERS QUADRANGLE NW NE SW

OPERATOR J. C. Newell and H. L. Woughter Map West Branch Township, Ogemaw County

498 498 Feet from North Line of Farm

" " East " " "

" " South " " "

48 " " West " " "

498 498 Feet from North Line of Section

909 909 " " East " " "

" " South " " "

" " West " " "

up

LEGEND

○ LOCATION

⊙ RIG

⊕ DRILLING

⊗ GAS WELL

● OIL WELL

⬮ SMALL OIL WELL

⊙ DRY HOLE

⬮ DRY SHOWING OIL

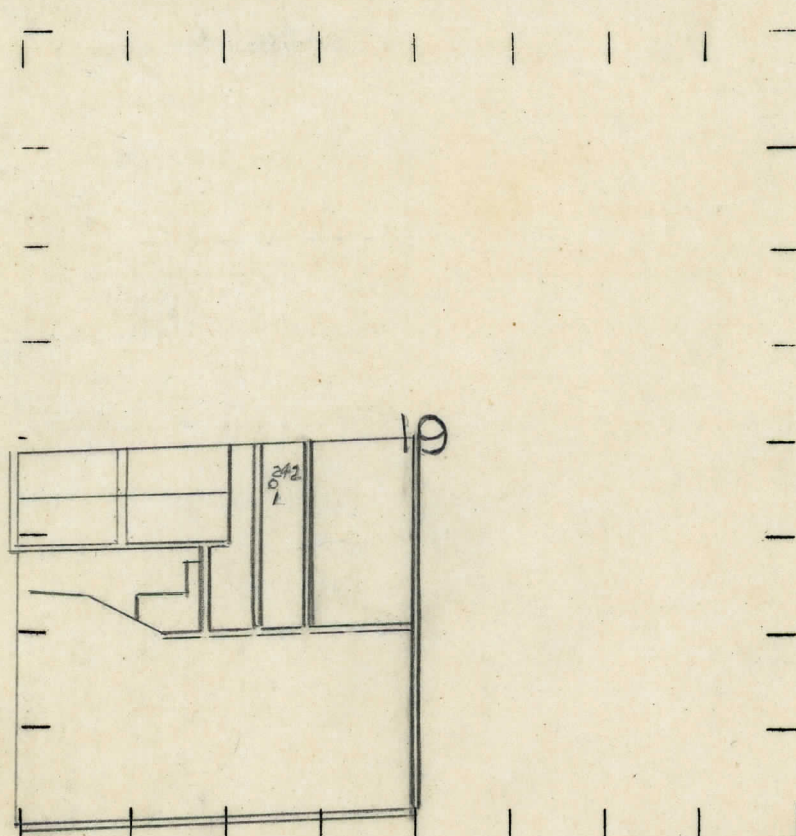
⊙ DRY SHOWING GAS

⊙ ABANDONED LOCATION

⬮ ABANDONED GAS WELL

⬮ ABANDONED OIL WELL

NOTE: Below make tracing from map, (when no map is obtainable make sketch) showing farm, center of section, this location with measurements and also wells, dry holes, or other locations in the vicinity of this location.



REMARKS:

SIGNED

Superintendent or Foreman.

Michigan Producing Division

PRODUCTION RECORD

2nd 24 hours after acid

FORMATION AND CASING RECORD

Remarks

Geo. H. Bell