



Western Michigan University
ScholarWorks at WMU

Legacy Scout Tickets from Pure Oil Company

8-20-2021

MGRRE_PureOilScoutTickets_County Farm_2_21129035230000

MGRRE

Western Michigan University

Follow this and additional works at: <https://scholarworks.wmich.edu/pure>



Part of the Geology Commons

WMU ScholarWorks Citation

MGRRE, "MGRRE_PureOilScoutTickets_County Farm_2_21129035230000" (2021). *Legacy Scout Tickets from Pure Oil Company*. 7947.

<https://scholarworks.wmich.edu/pure/7947>

This Document is brought to you for free and open access via ScholarWorks at WMU. It has been accepted for inclusion in Legacy Scout Tickets from Pure Oil Company by an authorized administrator of ScholarWorks at WMU. See the National Digital Catalogue - Science Base Catalogue for more collections submitted by MGRRE.



MGRRE_PureOilScoutTickets_County Farm_2_21129035230000

API 21129035230000

Permit Number 3523

Lease Name County Farm

Well Number 2

County Ogemaw

Township 22N

Range 02E

Section 20

2021 DEQ or Pure co_name Muskegon Development Company

Pure Number 252

Latitude 44.2838018

Longitude -84.2250997

THE PURE OIL COMPANY

Date June 19, 1946 Corrected

LOCATION REPORT

A.F.E. No. _____

Division Mich. Producing

District _____

Lease County Farm

Acres _____

Lease No. _____

Elevation _____

Well No. 2 (Serial No. 252)Quadrangle NW NW SWSec. 20Twp. 22 NRge. 2 E~~ENK~~
~~ENK~~
Twp.West Branch

Survey _____

County OgemawState MichiganOperator Del FortneyMap West Branch Township, Ogemaw County

Feet from North Line of Lease

" " East " " "

" " South " " "

" " West " " "

Feet from North Line of Section

" " East " " "

" " South " " "

" " West " " "

LEGEND

○ Location



Gas Well



Oil Well



Gas - Distillate Well



Dry Hole



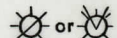
Dry Showing Oil



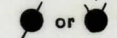
Dry Showing Gas



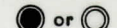
Abandoned Location



Abandoned Gas Well



Abandoned Oil Well



Input Well

See plat - Ogemaw #252.

N

Remarks: Scouting Dept.

Scale _____

Submitted by

Change of operator.

Approved by

Division Manager

Approved by

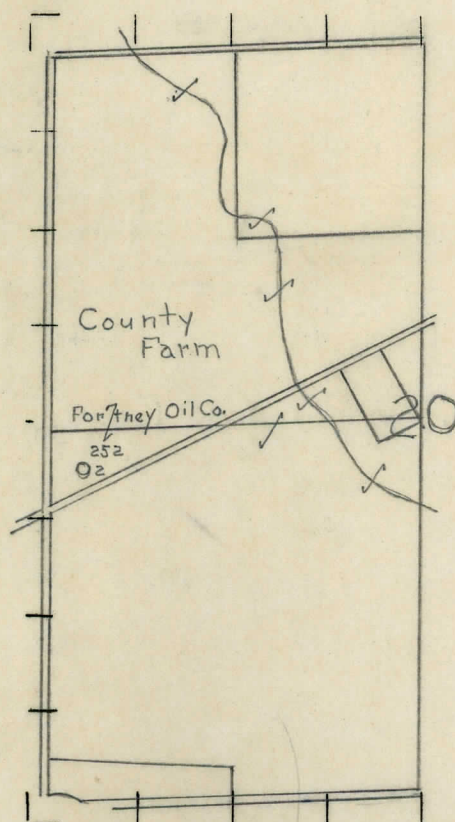
Vice-President - General Manager

DATE September 3, 1936 LOCATION REPORT No. 252
 STATE Michigan COUNTY Ogemaw DIST. West Branch SEC. 20 TOWN 22 N RANGE 25 E
 WELL No. 22 (SERIAL No. 252) FARM County Farm ACRES
 NAME OF STREAM OR WATERS QUADRANGLE NW-NW-SW
 OPERATOR Fortney Oil Company Map West Branch Township, Ogemaw County
Fortney Oil Co.
west branch - Ogemaw

Feet from North Line of Farm
 " " East " " "
309 309 " " South " " "
201 201 " " West " " "
330 330 Feet from North Line of Section
 " " East " " "
 " " South " " "
201 201 " " West " " "

LEGEND
 O LOCATION
 ⊕ RIG
 ⊕ DRILLING
 ☼ GAS WELL
 ● OIL WELL
 ● SMALL OIL WELL
 ⊕ DRY HOLE
 ⊕ DRY SHOWING OIL
 ⊕ DRY SHOWING GAS
 ⊕ ABANDONED LOCATION
 ☼ ABANDONED GAS WELL
 ● ABANDONED OIL WELL

NOTE: Below make tracing from map, (when no map is obtainable make sketch) showing farm, center of section, this location with measurements and also wells, dry holes, or other locations in the vicinity of this location.



REMARKS:

SIGNED

R. L. Yeager
 Superintendent or Foreman.

Michigan Producing Division

No. 252

Signed G. W. Bell