



Western Michigan University  
ScholarWorks at WMU

---

Legacy Scout Tickets from Pure Oil Company

---

8-20-2021

**MGRRE\_PureOilScoutTickets\_Fisk Mary\_3\_21129036120000**

MGRRE

*Western Michigan University*

Follow this and additional works at: <https://scholarworks.wmich.edu/pure>



Part of the Geology Commons

---

#### WMU ScholarWorks Citation

MGRRE, "MGRRE\_PureOilScoutTickets\_Fisk Mary\_3\_21129036120000" (2021). *Legacy Scout Tickets from Pure Oil Company*. 7958.

<https://scholarworks.wmich.edu/pure/7958>

This Document is brought to you for free and open access via ScholarWorks at WMU. It has been accepted for inclusion in Legacy Scout Tickets from Pure Oil Company by an authorized administrator of ScholarWorks at WMU. See the National Digital Catalogue - Science Base Catalogue for more collections submitted by MGRRE.



---

**MGRRE\_PureOilScoutTickets\_Fisk Mary\_3\_21129036120000**

API 21129036120000

Permit Number 3612

Lease Name Fisk Mary

Well Number 3

County Ogemaw

Township 22N

Range 02E

Section 27

2021 DEQ or Pure co\_name Sappington, Henry

Pure Number 263

Latitude 44.26496

Longitude -84.18121

## THE PURE OIL COMPANY

DATE December 3, 1936

Corrected

## LOCATION REPORT

No. 263STATE Michigan

COUNTY

OgemawDIST. W. BranchTWP. West BranchSEC. 27

TOWN

22 N

RANGE

2 EWELL No. 33 (SERIAL No. 263) FARMFisk Brothers

ACRES

NAME OF STREAM OR WATERS

QUADRANGLE

NE-SW-SW  
NE SW SWOPERATOR Wm. Kerr and Associates

Map

West Branch Township, Ogemaw CountyW. Branch - Oge.330 330 Feet from North Line of Farm330 330 " " East " " "

" " South " " "

" " West " " "

Feet from North Line of Section

" " East " " "

990 990 " " South " " "990 990 " " West " " "

## LEGEND

○ LOCATION

① RIG

⊕ DRILLING

☼ GAS WELL

● OIL WELL

⬤ SMALL OIL WELL

⊙ DRY HOLE

⬤ DRY SHOWING OIL

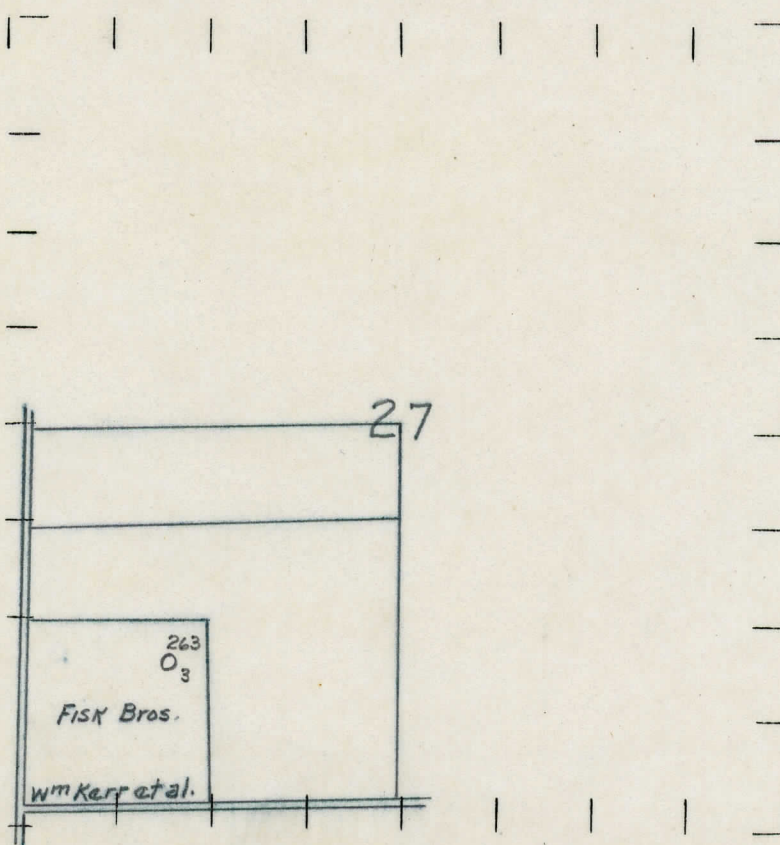
⬤ DRY SHOWING GAS

⊙ ABANDONED LOCATION

☼ ABANDONED GAS WELL

⬤ ABANDONED OIL WELL

NOTE: Below make tracing from map, (when no map is obtainable make sketch) showing farm, center of section, this location with measurements and also wells, dry holes, or other locations in the vicinity of this location.



REMARKS:

Change in Operator

SIGNED

Superintendent or Foreman.



DATE December 2, 1936

Collected

LOCATION REPORT

No. 263

DATE October 22, 1936

LOCATION REPORT

No. 263

STATE Michigan

COUNTY

Ogemaw

DIST.

West Branch

27

TOWN

22 N

RANGE

2 E

WELL No. 33

(SERIAL No. 263)

FARM

TWP.

Fisk Brothers

SEC.

27

ACRES

NAME OF STREAM OR WATERS

QUADRANGLE

NE SW SW

OPERATOR

Kerr, and J. Stanley See

Map

West Branch Township, Ogemaw County

West Branch - Oge, Co.

330 330

Feet from North Line of Farm

330 330

" " East " " "

" " South " " "

" " West " " "

Feet from North Line of Section

" " East " " "

" " South " " "

" " West " " "

990 990

990 990

LEGEND

○ LOCATION

① RIG

⊕ DRILLING

☼ GAS WELL

● OIL WELL

⬮ SMALL OIL WELL

⬮ DRY HOLE

⬮ DRY SHOWING OIL

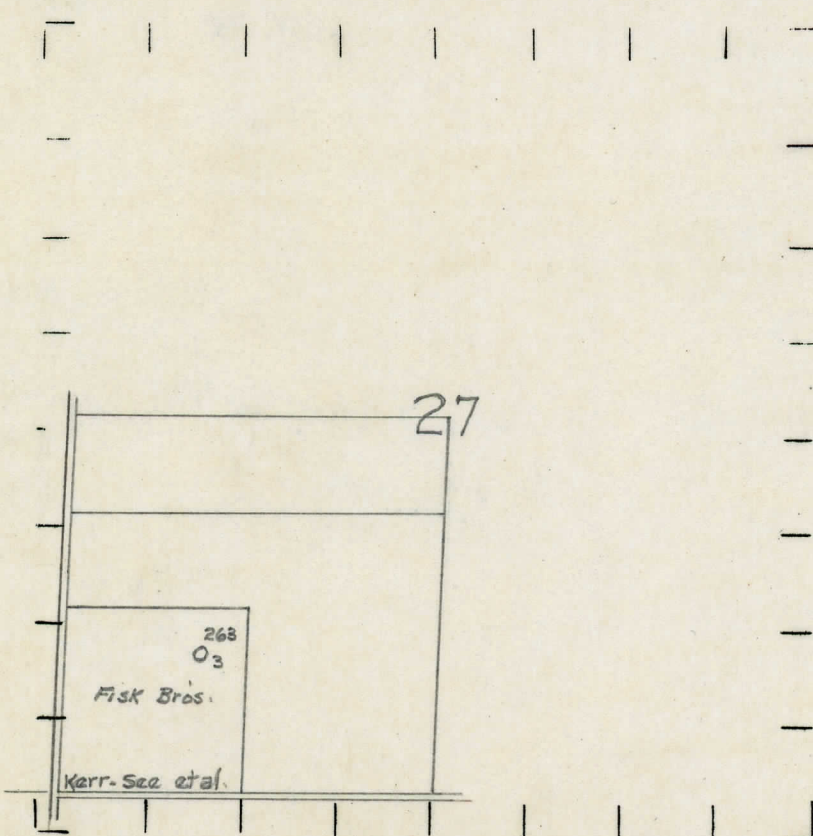
⬮ DRY SHOWING GAS

⬮ ABANDONED LOCATION

⬮ ABANDONED GAS WELL

⬮ ABANDONED OIL WELL

NOTE: Below make tracing from map, (when no map is obtainable make sketch) showing farm, center of section, this location with measurements and also wells, dry holes, or other locations in the vicinity of this location.



REMARKS:

SIGNED

R. L. Yeager

Superintendent or Foreman.



Signed \_\_\_\_\_ Geo. H. Bell