



Western Michigan University  
ScholarWorks at WMU

---

Legacy Scout Tickets from Pure Oil Company

---

8-20-2021

**MGRRE\_PureOilScoutTickets\_Ellis W E\_1\_21129036390000**

MGRRE

*Western Michigan University*

Follow this and additional works at: <https://scholarworks.wmich.edu/pure>



Part of the Geology Commons

---

#### WMU ScholarWorks Citation

MGRRE, "MGRRE\_PureOilScoutTickets\_Ellis W E\_1\_21129036390000" (2021). *Legacy Scout Tickets from Pure Oil Company*. 7962.

<https://scholarworks.wmich.edu/pure/7962>

This Document is brought to you for free and open access via ScholarWorks at WMU. It has been accepted for inclusion in Legacy Scout Tickets from Pure Oil Company by an authorized administrator of ScholarWorks at WMU. See the National Digital Catalogue - Science Base Catalogue for more collections submitted by MGRRE.



---

**MGRRE\_PureOilScoutTickets\_Ellis W E\_1\_21129036390000**

API 21129036390000

Permit Number 3639

Lease Name Ellis W E

Well Number 1

County Ogemaw

Township 22N

Range 01E

Section 14

2021 DEQ or Pure co\_name Bachelder and Gallaher

Pure Number 267

Latitude 44.29231

Longitude -84.2681

THE PURE OIL COMPANY

LOCATION REPORT

LOCATION REPORT

No. 267

No. 267

DATE April 2, 1941  
DATE October 28, 1936

STATE Michigan COUNTY Ogemaw DIST. Ogemaw TWP. Ogemaw SEC. 14 TOWN 22 N RANGE 1 E  
WELL No. 1 (SERIAL No. 267) FARM W. E. Ellis ACRES

NAME OF STREAM OR WATERS QUADRANGLE SE SE SE

OPERATOR Bachelder and Gallaher Map Ogemaw Township, Ogemaw County

Feet from North Line of Farm

" " East " " "

" " South " " "

" " West " " "

Feet from North Line of Section

" " East " " "

" " South " " "

" " West " " "

LEGEND

○ LOCATION

① RIG

⊕ DRILLING

☼ GAS WELL

● OIL WELL

◆ SMALL OIL WELL

⊙ DRY HOLE

◆ DRY SHOWING OIL

⊙ DRY SHOWING GAS

⊙ ABANDONED LOCATION

☼ ABANDONED GAS WELL

◆ ABANDONED OIL WELL

NOTE: Below make tracing from map, (when no map is obtainable make sketch) showing farm, center of section, this location with measurements and also wells, dry holes, or other locations in the vicinity of this location.

See plat - Serial No. 267.

REMARKS: Change of operator.

SIGNED

Subintendent or Foreman.

MEET No. 7 (SERIAL No. 595) E. E. Ellis  
STATE Michigan COUNTY Ogemaw DIST. Ogemaw SEC. 14 TOWN 22 N RANGE 1 E  
WELL No. 11 (SERIAL No. 267) FARM W. E. Ellis ACRES  
NAME OF STREAM OR WATERS QUADRANGLE SE SE SE

OPERATOR Smith Petroleum Company Map Ogemaw County, Ogemaw Township  
Smith Pet. Co. 09c - 09c.

Feet from North Line of Farm

330 330 " " East " " "

330 330 " " South " " "

" " West " " "

Feet from North Line of Section

330 330 " " East " " "

330 330 " " South " " "

" " West " " "

#### LEGEND

○ LOCATION

⊙ RIG

⊕ DRILLING

☼ GAS WELL

● OIL WELL

⬮ SMALL OIL WELL

⊙ DRY HOLE

⬮ DRY SHOWING OIL

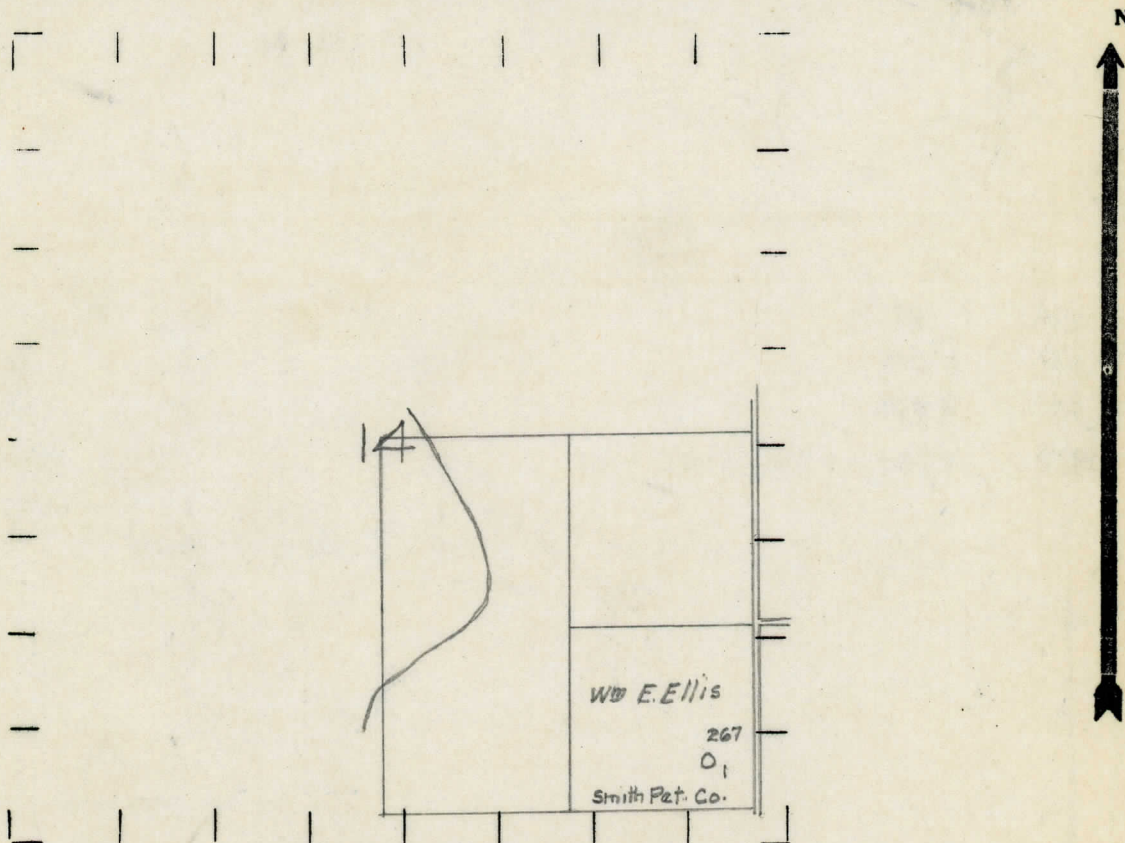
⊙ DRY SHOWING GAS

⬮ ABANDONED LOCATION

☼ ABANDONED GAS WELL

⬮ ABANDONED OIL WELL

NOTE: Below make tracing from map, (when no map is obtainable make sketch) showing farm, center of section, this location with measurements and also wells, dry holes, or other locations in the vicinity of this location.



REMARKS:

SIGNED

*R. L. Yeager*

Superintendent or Foreman.

